

PORT FAIRY

Spring

MUSIC FESTIVAL
6TH - 8TH OCTOBER

06



welcome

MARY DELAHUNTY MP
MINISTER FOR THE ARTS



Each spring, passionate music enthusiasts, local communities and visitors from near and far gather together in Port Fairy for an exciting musical experience in truly magical surroundings.

The Port Fairy Spring Music Festival showcases leading international and local musicians, including many gifted and dedicated artists who live and perform in Victoria throughout the year. This year's program highlights the contribution that many young Australian artists are making to our vibrant arts scene. One of Victoria's most successful regional festivals, the Port Fairy Spring Music Festival opens the door to creative engagement and community participation. The Bracks Government passionately believes in the vital role the arts play in building strong, harmonious and vibrant communities. A community where people take part in cultural activity has greater potential for connection and caring. I encourage you to join in with the spirit of the Port Fairy Spring Music Festival and here's to another great weekend!

is a picturesque fishing village on the beautiful Shipwreck Coast of Western Victoria. Since 1990 it has provided a unique environment for the Port Fairy Spring Music Festival. Visitors to this special, 'festival town', always remark on the accessibility of the venues, which are within easy walking distance from one another and on its historic beauty.

There is a vast array of colourful, friendly restaurants and accommodation ranges from the luxurious to the budget oriented. Local attractions include a world class golf course and excellent beach walks. The Port Fairy and Region Visitor Information Centre would be happy to provide more details.

Each concert usually lasts about one hour, including a short informative pre-concert talk, so there is ample time to explore the town or simply enjoy a coffee or other refreshments.

ome

to our 17th Festival

PAUL CLARKSON
FESTIVAL CHAIRMAN



Welcome to the programme for the 17th Annual Port Fairy Spring Music Festival, which from its early tentative beginnings has grown to become one of our major regional festivals.

For his second Festival, Stephen McIntyre has drawn together one of the largest and most diverse programmes of concerts and events that we have staged.

The Festival would not be possible without the continuing support of the Victorian Government, through Arts Victoria, and the Shire of Moyne. Also of very great importance to us are our sponsors and donors and we thank them all. It is a particular pleasure to welcome Alcoa as our principal sponsor this year and to have responded to its request for an enhanced schools and workshop programme.

I would also like to thank the Board of Management and our group of volunteers for their commitment and tireless efforts to make the Festival a success. We all look forward to welcoming you to Port Fairy in October.

STEPHEN MCINTYRE
FESTIVAL DIRECTOR



I am delighted to welcome you to the Port Fairy Spring Music Festival for 2006. This year I have invited a new roster of brilliant young (and younger!) performers. And I am also welcoming back several of last year's performers who were such a success that many of you asked for the chance to hear them again.

I hope you will find the resulting mix as delightful as I do.

I urge you to book as soon as you receive this brochure, as so many of last year's shows sold out so quickly.

It will be great to see friends, both old and new, and to spend a weekend of music with you in the wonderful atmosphere of Port Fairy.

06



“MUSIC PRODUCES A KIND OF PLEASURE
WHICH HUMAN NATURE CANNOT DO WITHOUT.”

(Confucius 551 – 479 BC)



YAMAHA

AT A GLANCE

FRIDAY 6TH OCTOBER

- 12 & 2PM **BYAR!**
THE MUSIC & SOUNDS OF
BALI MUSICA VIVA IN
SCHOOLS PROGRAM
CONSOLIDATED SCHOOL
- 8PM **TANKSTREAM QUARTET**
CINEMA
- 10PM **CLASSIC VIBES**
DRILL HALL

SATURDAY 7TH OCTOBER

- 10AM **KE LIN**
PLAYS LISZT
CINEMA
- 10AM **CAMERON HILL, VIOLIN &**
BONNIE BROWN, PIANO
LECTURE HALL
- 11.30AM **ALL THE PLEASURES!**
ST JOHN'S CHURCH
- 11.30AM **BYAR!**
THE MUSIC & SOUNDS
OF BALI
CONSOLIDATED SCHOOL
- 12.45PM **LUNCH WITH FRIENDS**
DRILL HALL
- 2PM **TANKSTREAM QUARTET**
WITH STEPHEN MCINTYRE
CINEMA
- 3.30PM **MARSHALL MCGUIRE, HARP**
RILEY LEE, SHAKUHACHI
ST JOHN'S CHURCH

3.30PM **IGOR MACHLAK AND OLGA**
KHARITONOVA, PIANO DUO
LECTURE HALL

5PM **'BETTER THE DIVA YOU KNOW...!'**
SUZANNE JOHNSTON
JULIA DE PLATER
CINEMA

8.15PM **THE ALCOA PORTLAND**
ALUMINIUM GALA
ORCHESTRAL CONCERT
CINEMA

10.15PM **STILETTO SISTERS**
DRILL HALL

SUNDAY 8TH OCTOBER

- 10AM **BENAUD PIANO TRIO**
CINEMA
- 11.30AM **JOHN DOWLAND, LACHRIMAE**
ST JOHN'S CHURCH
- 11.30AM **MICHAEL KIERAN HARVEY**
LECTURE HALL
- 12.45PM **LUNCH WITH FRIENDS**
DRILL HALL
- 2 PM **BACH AT THE SUMMIT**
ST JOHN'S CHURCH
- 2PM **NOT TOO NEAR... NOT TOO FAR**
LECTURE HALL
- 3.30PM **JAZZ IN THE AFTERNOON**
DRILL HALL

FRIDAY 6TH OCTOBER
TIME: 12 & 2PM
CONSOLIDATED SCHOOL

Gold coin donation.

friday 6th october

BYAR! THE MUSIC AND SOUNDS OF BALI

Two workshops presented in association with the Musica Viva in schools program.

This concert is generously sponsored by David and Isobel Jones on behalf of the FJ Foundation.

FRIDAY 6TH OCTOBER
TIME: 8PM
CINEMA

THE TANKSTREAM QUARTET

Australia's internationally acclaimed string quartet plays a programme of masterworks.

MOZART: *"Dissonance" Quartet (K. 465)*
PETER SCULTHORPE: *Quartet No 8*
SCHUBERT: *Quartet in D minor D.810*
("Death and the Maiden")

*This concert is presented in memory
of the festival's co-founder,
Michael J Easton ARAM (1955-2004).*

Tankstream Quartet

Since its formation in 2000 the Tankstream Quartet has established itself amongst the finest chamber music ensembles in Australia. The quartet has won several prestigious prizes including the Grand Prize of the National Chamber Music Competition in Melbourne and the string quartet division of the Osaka International Chamber Music Competition.

The Tankstream Quartet has performed in England, Austria and Japan as well as throughout Australia. In 2004 the quartet was chosen by the Australian Government to be Cultural Ambassadors for the Danish Royal Wedding, in addition to two concerts in Copenhagen and Aarhus.



FRIDAY 6TH OCTOBER
TIME: 10PM
DRILL HALL

CLASSIC VIBES

NICK PARNELL, *PERCUSSION*
WITH JAMIE COCK, *PIANO*

CLASSICS FROM BACH TO GERSHWIN
TRANSFORMED IN A TOTALLY NEW
GUISE MAKE FOR PERFECT LATE
NIGHT ENTERTAINMENT.



Nick Parnell

Nick Parnell, is Australia's most exciting young concert percussionist. A leader of the new generation of performers, Nick breaks traditional boundaries exploring world music and performing works by Bach and Chopin on percussion. Winner of the 2001 International Melbourne Percussion Competition, his energy and precision on instruments including marimba, vibraphone, drums, gongs and cymbals, have fascinated and enchanted audiences throughout Australia, Asia and the UK.



free entertainment
throughout the weekend

LOOK OUT! THE SHARPSHOOTERS ARE IN PORT FAIRY

It's Born In A Taxi, the street theatre group that gave us "The Angels" last year - three lost angels on the middle traffic isle, one half-way up the central pole while the others directed traffic. Yep, they're back.

This time as The Sharpshooters. Think black and white movies, incompetent villains and slapstick comedy and you get a good idea of how these suspicious mobsters operate. Slick, silly and silent these gangsters dance, schmooze and charm. Look out, they're heading for a hall near you and it won't be violins they produce from their cases! No recital is safe.

SATURDAY 7TH OCTOBER
TIME: 10AM
CINEMA

saturday 7th october

KE LIN, PLAYS LISZT

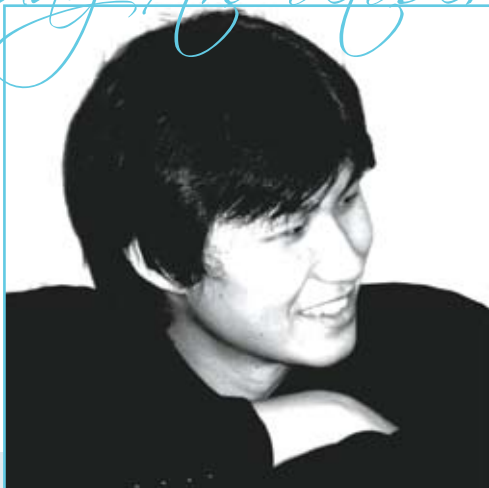
A favourite of the 2005 Festival, pianist Ke Lin returns with a phenomenal Liszt programme.

FRANZ LISZT:

Transcendental Etude No. 3

Sonnetto dal Petrarca No. 2

Sonata in B minor



KE LIN

Born in Shanghai, Ke Lin arrived in Australia with his family at the age of 12. He studied Music and Commerce at the University of Melbourne with Glenn Riddle.

Ke Lin has been a major prize winner in many national competitions and in the 2005 Lev Vlassenko Competition, he won the People's Choice Award.

He has appeared as soloist with many of Australia's most important orchestras and in 2006, will present solo recitals for the Piano Landmarks Concert series, Liszt's Piano Concerto No 2 with Orchestra Victoria in Shepparton as well as Liszt's Piano Concerto No 1 with the Geelong Philharmonic.

At his first appearance at the Port Fairy Spring Music Festival in 2005 he received a spontaneous standing ovation.



SATURDAY 7TH OCTOBER
TIME: 10AM
LECTURE HALL

CAMERON HILL, *VIOLIN* AND
BONNIE BROWN, *PIANO*;

Cameron Hill, winner of the Dorcas McClean National Violin Competition 2005 plays two of the major works of the classical repertoire.

BEETHOVEN:

Sonata No.7 in C minor, Op.30, No.2

PROKOFIEV:

Sonata No.2 in D major, Op.94a;



BONNIE
BROWN

Bonnie Brown is an active performer, both as soloist and chamber musician. During her time at the University of Melbourne Faculty

of Music, she has been awarded numerous prizes and scholarships, including a Music Faculty Scholarship (for the Bachelor of Music, which she attained with honours), and an Australian Postgraduate Award (for the Masters of Music performance). In 2003, Bonnie spent a semester of study in Austria under the renowned Professor Alexandr Satz. She has been under the supervision of Associate Professor Ronald Farren-Price since 2000.

CAMERON HILL

Cameron is a 22 year-old violinist who in 2006 commenced study at the Australian National Academy of Music with Alice Waten. At the end of 2005 he completed his Bachelor of Music (Honours) at the University of Melbourne studying with William Hennessy.

He topped the year and was subsequently awarded the Catherine Grace McWilliam Prize. During his final year of the course he won the 2005 Dorcas McClean Violin Scholarship, Australia's leading violin competition. Cameron performs regularly with the Australia Pro Arte Orchestra.

SATURDAY 7TH OCTOBER
TIME: 11.30AM
ST JOHN'S CHURCH

ALL THE PLEASURES!

GENEVIEVE LACEY, *RECORDER*
DANIEL YEADON, *GAMBA*
NEAL PERES DA COSTA,
HARPSICHORD

A programme of delights spanning repertoire from the 17th-century, the court of the Sun King, a dazzling Bach toccata, Handel's golden classics, and some light-hearted fun from 21st century Sydney.

This concert is presented in association with Musica Viva Australia.



GENEVIEVE LACEY WITH DANIEL YEADON & NEAL PERES DA COSTA

Genevieve Lacey is an acclaimed recorder virtuoso. She appears as a soloist touring Australia and abroad with the Australian Chamber Orchestra, Academy of Ancient Music, Australian Brandenburg Orchestra and Malaysian Philharmonic Orchestra and works internationally as a solo recitalist. She was one of the 2005 Port Fairy Music Festival most admired soloists.

Since their return to Australia after 15 years of London-based touring, Neal Peres da Costa and Daniel Yeadon have joined Genevieve in recital. Neal Peres da Costa is a specialist in early keyboards and lecturer in musicology at Sydney Conservatorium. Daniel Yeadon specialises in baroque/classical cello and viol da gamba.

next year...

The Port Fairy Spring Music Festival next year will be held over the weekend of 12th to 14th October 2007.
For updates about the festival, visit the website:

10

www.portfairyspringmusicfestival.com

'07
FESTIVAL
2007

SATURDAY 7TH OCTOBER
TIME: 11.30AM
CONSOLIDATED SCHOOL

BYAR! THE MUSIC AND SOUNDS OF BALI

Byar! (pron. 'bee-are') is a quartet of musicians who share a fascination with the music and sounds of Bali. 'Byar' is a word used in Bali to describe the sound of an entire gamelan striking a powerful chord together. The instrumentation of the group encompasses a variety of traditional gamelans. The leader of the group, Adrian Sherriff, spent his childhood in Indonesia and began his study of Balinese music as a teenager.



He has spent several years touring internationally with leading Balinese musicians in the Balinese-Australian music theatre production, "The Theft of Sita". The four musicians, Adrian Sherriff, Jo To, Adam King, Jeremy Dullard met through their involvement with the Improvisation Degree at the Victorian College of the Arts.

This concert is presented in association with Musica Viva Countrywide.

SATURDAY 7TH OCTOBER
& SUNDAY 8TH OCTOBER
TIME: 12.45PM
DRILL HALL

LUNCH WITH FRIENDS

Our special festival Lunch with Friends returns again, this time with a special Music Trivia Quiz conducted by Festival performers.

Pit yourself against the players!
Prizes too!!

Book early as places are limited.



SATURDAY 7TH OCTOBER
TIME: 2PM
CINEMA

TANKSTREAM QUARTET WITH STEPHEN MCINTYRE

Ravel's great string quartet and the remarkable quintet for piano and string quartet by anniversary composer, Dmitri Shostakovich.

RAVEL: *String Quartet*

SHOSTAKOVICH:

Quintet for piano and strings, Op. 57

Tankstream Quartet is presented in association with Musica Viva Australia.

Musica Viva CountryWide is sponsored by:



Tankstream Quartet biography page 6.



Stephen McIntyre



SATURDAY 7TH OCTOBER
TIME: 3.30PM
ST JOHN'S CHURCH

MARSHALL MCGUIRE, *HARP*
& RILEY LEE, *SHAKUHACHI*

The unique combination of these two timeless instruments in a programme that fuses East and West.

This concert is presented in association with Musica Viva Australia.



MARSHALL MCGUIRE
& RILEY LEE

The unique combination of these two ancient instruments - the harp and the shakuhachi (Japanese bamboo flute) represents the melding of eastern and western musical traditions.

Riley Lee is Australia's only Grand Master of the shakuhachi, and one of the few outside Japan.

Marshall McGuire is a musician of exceptional imagination and flair, who is renowned for his passionate commitment to new music, as well as his interest in baroque performance.



SATURDAY 7TH OCTOBER

TIME: 3.30PM

LECTURE HALL

OLGA KHARITONOVA & IGOR MACHLAK, *PIANO DUO*

Music of the Ballets Russes, played by
the magic four hands of this incomparable
Russian Piano Duo

RAVEL: *Mother Goose Suite (1908-1910)*

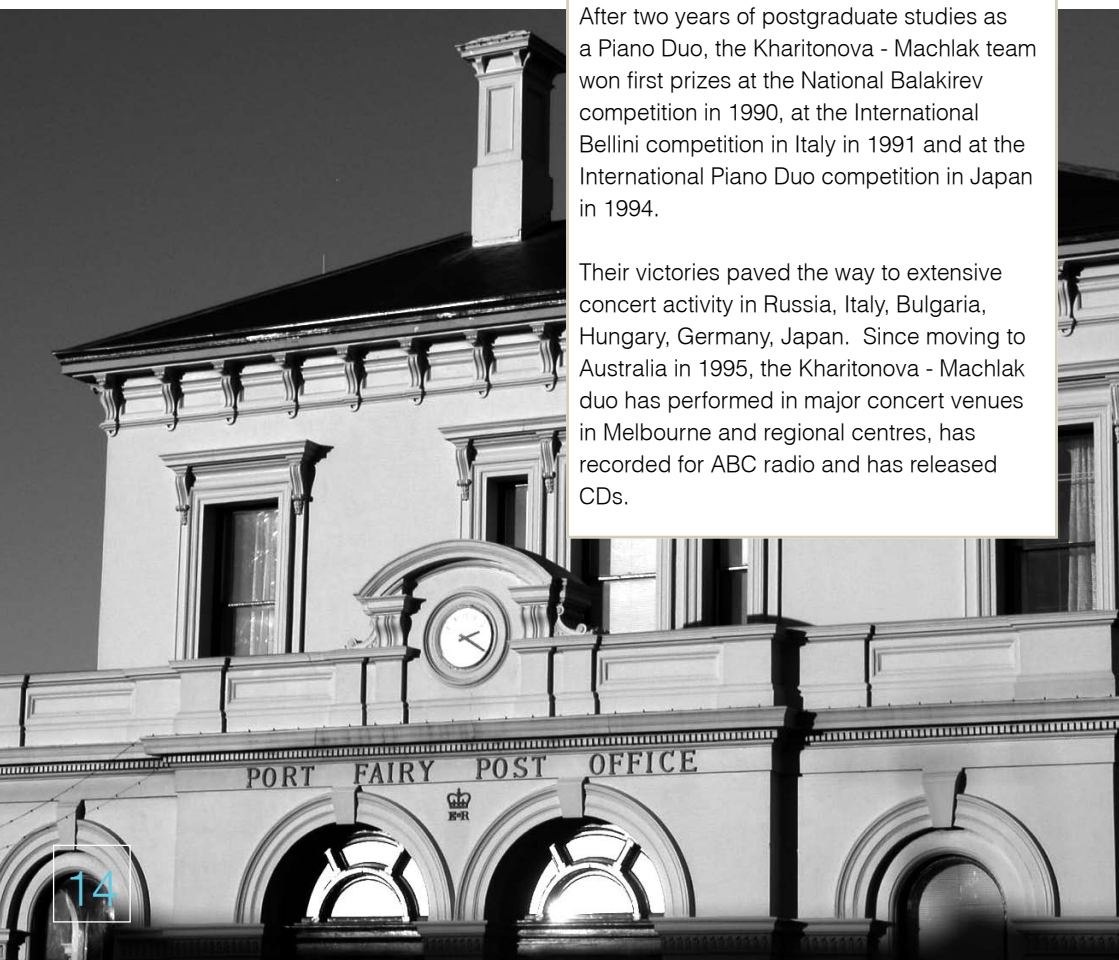
STRAVINSKY: *Petrushka*



OLGA KHARITONOVA & IGOR MACHLAK

Russian born Olga Kharitonova and Igor Machlak both graduated from the Moscow Tchaikovsky Conservatorium as solo pianists. After two years of postgraduate studies as a Piano Duo, the Kharitonova - Machlak team won first prizes at the National Balakirev competition in 1990, at the International Bellini competition in Italy in 1991 and at the International Piano Duo competition in Japan in 1994.

Their victories paved the way to extensive concert activity in Russia, Italy, Bulgaria, Hungary, Germany, Japan. Since moving to Australia in 1995, the Kharitonova - Machlak duo has performed in major concert venues in Melbourne and regional centres, has recorded for ABC radio and has released CDs.



SATURDAY 7TH OCTOBER
TIME: 5PM
CINEMA

'BETTER THE DIVA YOU KNOW...!'

SUZANNE JOHNSTON, *MEZZO SOPRANO*
JULIA DE PLATER, *PIANO*

Australia's most loved mezzo-soprano invites you on a journey with her into the world of Bizet, Broadway and Beyond.

SUZANNE JOHNSTON

Suzanne Johnston has the rare distinction of achieving equal success in opera, music theatre and concerts. Her operatic career encompasses the prestigious Glyndebourne and Salzburg Festivals, as well as Australia's major opera companies for whom her repertoire ranges from Carmen to Eliza in My Fair Lady. Concert appearances include Royal Opera House Covent Garden, recitals in London, Paris, Milan, New York, Los Angeles, performances with Symphony Australia and Musica Viva.

Her awards include Sydney Theatre Critics' Circle Award, MO Award, Churchill Fellowship and three Green Room Awards.



JULIA DE PLATER

Julia de Plater is a graduate of the Sydney Conservatorium of Music. From 1979-85, she was a repetiteur with Opera Australia during which time she was awarded scholarships by Opera Foundation of Australia and the Joan Sutherland Society.

Julia de Plater has had vast experience conducting in many musical genres, opera, symphony, and music theatre. In 2005, she conducted Trial by Jury/H.M.S. Pinafore for Opera Australia and will lead performances of Carmen for OzOpera during 2006.



SATURDAY 7TH OCTOBER
TIME: 8.15PM
CINEMA

THE "ALCOA PORTLAND ALUMINIUM" GALA CONCERT

A TRIBUTE TO MOZART AND SHOSTAKOVICH

A stellar array of performers, including vocal soloists from **La Scala**, with Orchestra Victoria in this spectacular tribute to Mozart and Shostakovich.

Lucinda Cran bassoon, **Lin Jiang** horn, **Anthony Pope** trumpet, **Stefan Cassomenos** piano, **Linda Campanella** soprano, **Matteo Peirone** baritone with Orchestra Victoria, conducted by **Marc Taddei**.

MOZART: *Concerto for bassoon and orchestra K.191*

MOZART: *Concerto for horn and orchestra, K.417*

MOZART: *Arias from Don Giovanni and Magic Flute*

SHOSTAKOVICH: *Concerto for piano, trumpet and strings, Op. 35*



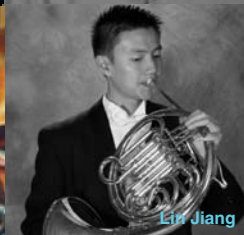
Lucinda Cran



Stefan Cassomenos



Anthony Pope



Lin Jiang



Linda Campanella



Matteo Peirone



SATURDAY 7TH OCTOBER
TIME: 10.15PM
DRILL HALL

STILETTO SISTERS

Back this year by popular demand, these three multi-talented musicians provide a delicious and light-hearted late night entertainment.



STILETTO SISTERS

The Stiletto Sisters are a dynamic and vibrant trio featuring the sparkling eyes and ready smiles of Hope Csutoros on violin, Judy Gunson on piano accordion, and double bassist Jo To. Gypsy melodies, seductive tango rhythms and sensuous songs from Europe and Latin America are their staple.

The Stiletto Sisters perform regularly to packed houses in their home town of Melbourne. They have toured to the prestigious Four Winds Festival in Bermagui, as well as to Sydney and Adelaide, and have wowed audiences with their passionate performances at the Famous Spiegeltent as part of the Melbourne International Festival.



SUNDAY 8TH OCTOBER
TIME: 10AM
CINEMA

sunday 8th october

BENAUD TRIO

LACHLAN BRAMBLE, *VIOLIN*
EWEN BRAMBLE, *CELLO*
AMIR FARID, *PIANO*

Winners of the 2005 Australian Chamber Music Competition play Schubert's masterpiece, along with some red hot Piazzolla.

ASTOR PIAZZOLLA: *Revolucionario*
SCHUBERT: *Piano Trio in B flat, D.969*

This concert has been made possible by the generous support of the Friends of the Port Fairy Spring Music Festival.



BENAUD TRIO

The Benaud Trio rose to national prominence after winning First Prize in the Piano Trio section of the 2005 Australian Chamber Music Competition. The Trio members share many common interests including a love for chamber music, Chinese food and an eagerness to break out the cricket bat at any opportunity.

The Benaud Trio have been broadcast nationwide on ABC Classic FM and Radio National and has also featured in mini-documentaries produced for ABC Television and Network Ten.



SUNDAY 8TH OCTOBER
TIME: 11.30AM
ST JOHN'S CHURCH

JOHN DOWLAND,
LACHRIMAE

John Dowland's *Lachrimae*, or "Seven teares figured in seven passionate pavans, with divers other pavans, galliards and Almands" is a cornerstone of Renaissance music from 1604.

ROSEMARY HODGSON, *LUTE*,

VIVIEN HAMILTON, *SOPRANO*,

WITH CONSORT ECLECTUS:

Miriam Morris, treble viol, Laura

Vaughan, treble viol Daniel Yeadon

tenor viol, Ruth Wilkinson, tenor viol

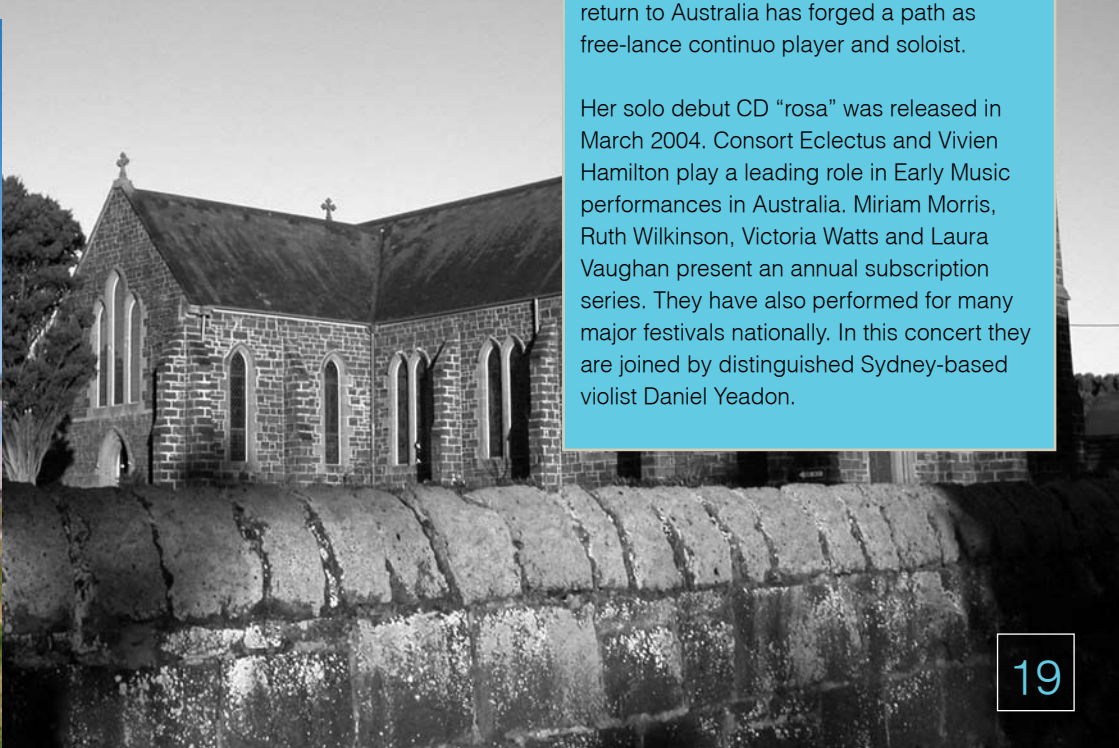
Victoria Watts, bass viol



ROSEMARY HODGSON AND
CONSORT ECLECTUS

Rosemary Hodgson is one of Australia's finest exponents of early plucked string instruments. Specialising in the performance of historic guitars and lutes, she is regularly engaged in major festivals and concert series throughout Australia and abroad. In 2000, Rosemary graduated from the Royal College of Music, London and since her return to Australia has forged a path as free-lance continuo player and soloist.

Her solo debut CD "rosa" was released in March 2004. Consort Eclectus and Vivien Hamilton play a leading role in Early Music performances in Australia. Miriam Morris, Ruth Wilkinson, Victoria Watts and Laura Vaughan present an annual subscription series. They have also performed for many major festivals nationally. In this concert they are joined by distinguished Sydney-based violist Daniel Yeadon.



SUNDAY 8TH OCTOBER
TIME: 11.30AM
LECTURE HALL

MICHAEL KIERAN HARVEY, *PIANO*

Australia meets Japan.

TWO WORLD PREMIERES:

Michael Kieran Harvey: *Sonata* (2006)

Kanako Okamoto: *Suite for piano* (2006)



MICHAEL KIERAN HARVEY

Michael Kieran Harvey was born in Sydney and studied piano with Alan Jenkins, Gordon Watson, and at the Liszt Academy under Sandor Falvai. His career has been notable for its diversity and wide repertoire. He has especially promoted the works of Australian and contemporary composers. He has recorded well over 20 CDs on various labels. His awards include the Grand Prix in the Ivo Pogorelich Competition, USA, the Debussy Medal, Paris and the Australian Government's Centenary Medal.

The Michael Kieran Harvey Scholarship was established in 2006 to encourage future directions in keyboard art music. He is currently an adjunct professor at the Tasmanian Conservatorium.

KANAKO OKAMOTO



Kanako Okamoto graduated from Aichi Prefectural University of Fine Arts and Music where she received a Masters Degree in Composition. She became a member of the Japan Federation of Composers' (JFC) in 1999 and the International Alliance for Women in Music (IAWM) in 2003. Her piano solo piece "Crystal Vision" was published in 2000 (JFC-0015). Her works have been performed at the 20th Asian Composers' League Festival in 1999, Federation Music Week in Melbourne in 2001, the 7th Evening of ACL/ISCM in Tokyo, 2002 ACL Forum in Seoul, 2003 International Festival of Women in Music Today Seoul, 14th International New Music Week in Bucharest Romania, Menin Gate Concert in 2005 Australia, Japan-Australia Exchange Concert in Melbourne 2006.

SUNDAY 8TH OCTOBER
TIME: 2PM
ST JOHN'S CHURCH

BACH AT THE SUMMIT

YE LIAN HE, VIOLONCELLO

BACH: Suites No 1 and No 6 for Cello solo
Festival 'cellist Ye Lian He plays two of Bach's
great masterpieces for the cello alone.



YE LIAN HE

Ye Lian migrated to Australia at an early age and has since won many eisteddfods as well as performed with orchestras including Melbourne University Symphony Orchestra, Queensland Youth Orchestra and Whitehorse Symphony.

He was also a finalist at the 2002 NYCC in Brisbane. He performed in Italy where he was accepted into the class of Maestro Antonio Meneses at the Accademia Chigiana in Siena and he recently studied with Liwei Qin on exchange at the National University of Singapore. He is currently finishing his 4th year of a music degree at Melbourne University.

SUNDAY 8TH OCTOBER
TIME: 2PM
LECTURE HALL

"NOT TOO NEAR... NOT TOO FAR"

a programme of American and Australian premieres
Adam Pinto piano and **Barry Cockroft** saxophone.



ADAM PINTO

Pianist and composer Adam Pinto maintains a busy performance schedule both as a chamber musician and soloist. His interest in performing new music, and in challenging audience expectations, has seen him premiere works by many Australian composers in New Music Festivals throughout Australia. As a duo music performer he has worked extensively with Barry Cockcroft, with whom he has premiered new works, including the recording of a major Sonata for Saxophone and Piano by Stuart Greenbaum.



BARRY COCKROFT

Innovative Australian saxophonist and composer, Barry has become well known for his captivating performances and exotic compositions. Travelling has become an integral part of his musical life, visiting 40 countries in recent years. Barry gives regular recitals across Australia with Perth pianist Adam Pinto and has performed with orchestras in Australia and Malaysia. He recently completed a long term residency at the Banff Centre for the Arts, Canada and his compositions continue to be performed worldwide.

SUNDAY 8TH OCTOBER
TIME: 3.30PM
DRILL HALL

JAZZ IN THE AFTERNOON

Gavin Franklin and his jazz ensemble perform the traditional and delightful close to our Festival.



GAVIN FRANKLIN JAZZ ENSEMBLE

The 2006 festival is the third appearance for Port Fairy resident Gavin Franklin. The personnel of Franklin's ensemble changes depending upon the availability of players. This year's group will again consist of performers with connections to the south western region of Victoria. All have had extensive experience in jazz through their participation in festivals and gigs at venues around the South West.

Their repertoire consists largely of standards by composers such as Dizzy Gillespie, Duke Ellington, Thelonious Monk, Horace Silver, Charlie Parker and Chick Corea.



MASTERCLASSES

Alcoa Portland Aluminium is sponsoring masterclasses to be presented locally during the Festival by performers from the Port Fairy Spring Music Festival.

Please check our website for details of dates, times and venues.

www.portfairyspringmusicfestival.com

Exhibitions *in port fairy*

WISHART GALLERY

CORNER SACKVILLE AND COX STREETS

Wishart Gallery is a large contemporary art gallery exhibiting works by leading contemporary Australian printmakers. Also on display are paintings, sculpture, glass, ceramics, jewellery and textiles by established and emerging local and national artists.

RICHARD WEATHERLY, 28 SEPTEMBER - 15 OCTOBER

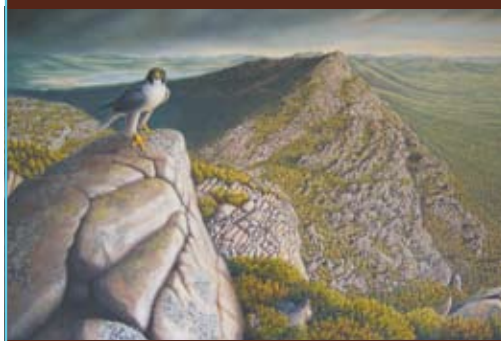
Richard Weatherly's affinity with nature began growing up on the sheep station 'Connewarran' outside of Mortlake. Here he was surrounded by the birds and animals, which were to provide the inspiration for his acclaimed wildlife and environmental paintings. "I am motivated simply by personal excitement with some elusive moment in the wild, and a desire to share this involvement with others."

Richard's extensive travel and research through Africa & Europe resulted in successive one-man shows at London's Sladmore Gallery and the inclusion of his paintings in the World Wildlife Exhibition. Exhibitions at the Australian Galleries followed in 1984 and 1989. Commissions from overseas took him to America and Mexico, then to Antarctica. His artwork appears in many books and the monograph "The Fairy Wrens", which he illustrated, won the coveted Whitley Award.

Of recent years, Richard has been painting mostly on commission, so opportunities to secure his work in Australia have been rare.



Chasing down the Wind, Oil on linen, 60x75cm



Guardian of the Range, Oil on linen, 60x90cm

WHALE BONE GALLERY

39A BANK STREET

10 YEAR CELEBRATION EXHIBITION

New works by Julie Kent and Molly Killeen
Glass sculptures by Robert Gatt and Freya Marriott

Friends of the Festival

Supporters of the Festival have the opportunity to enhance their involvement by becoming a Friend of the Festival.

The Friends make an important contribution to the celebratory atmosphere of the weekend and to the economic stability of the organisation. Their financial and personal support is evidence of the regard the Festival holds in the community.

The benefits of Friendship include:

- "Vocal Lines", the newsletter of the Friends of the Festival
- An invitation to the official launch of the Festival in Melbourne in early August
- Advance notice of the program and priority booking of tickets
- An invitation to the opening reception of the Festival in Port Fairy

The annual fee for membership of the Friends of the Festival is \$30 per person and \$50 per couple.

For further information about the Friends or about Tax Deductible Donations, please contact the Festival office on (03) 5568 3030 or by email: springfest@port-fairy.com



TAX DEDUCTIBLE DONATIONS

The Port Fairy Spring Music Festival Inc Public Fund is listed on the Register of Cultural Organisations under Subdivision 30-F of the Income Tax Assessment Act 1997. Donations over \$2 to the Festival's public fund are tax deductible. These donations are greatly appreciated, carefully managed and promptly acknowledged and receipted.



Portland Aluminium is located in the Glenelg Shire in south west Victoria.

The Smelter commenced operations in 1986 with a second potline coming on stream in 1988. The Smelter produces approximately 350,000 tonnes of aluminium ingot annually, most of which is exported through the Port of Portland to customers in South East Asia.

Together, Alcoa's aluminium smelters at Portland and Point Henry (near Geelong) produce approximately 30% of Australia's total aluminium. Alcoa is Victoria's largest exporter.

Portland Aluminium provides more than 620 direct jobs and many more indirect jobs. Over 60% of employees have worked at Portland Aluminium for over ten years.

Portland Aluminium holds an ISO 14001 accredited licence, and Environment Protection Authority licence and like all of Alcoa's Victorian sites is accredited waste wise by Eco Recycle Victoria.



FREE PUBLIC TOURS OF PORTLAND ALUMINIUM

are held twice daily each Monday, Wednesday & Friday. The tours include a guided drive through the operations and surrounding parklands.

**For bookings FREECALL
1800 035 567.**

In October 2006 Portland Aluminium celebrates 20 years in the Portland Community. Under the banner Partnering Stronger Communities, Portland Aluminium works in active partnership with local organisations such as the Portland and District Principal's Association, Lake Condah Sustainable Development Project and United Way Glenelg, and is a proud contributor to over 160 community organisations and projects to date in 2006.

Portland Aluminium sits on just over 500 hectares of land with smelting operations, ancillary buildings and roads occupying around 100 hectares. The remaining land was designed as a 'Smelter in the Park' with the creation of parklands around the plant for local community relaxation, areas of research and learning, and habitats for wildlife. Portland Aluminium's 'Smelter in the Park' is recognised worldwide as a benchmark for industrial and environmental harmony.

For further information on Portland Aluminium please visit www.alcoa.com.au or phone Anna Sullivan,





Wisharts at the wharf

SEAFOOD & WINE WITH A VIEW

For the freshest seafood, best fish & chips and sensational river views - experience Wisharts!

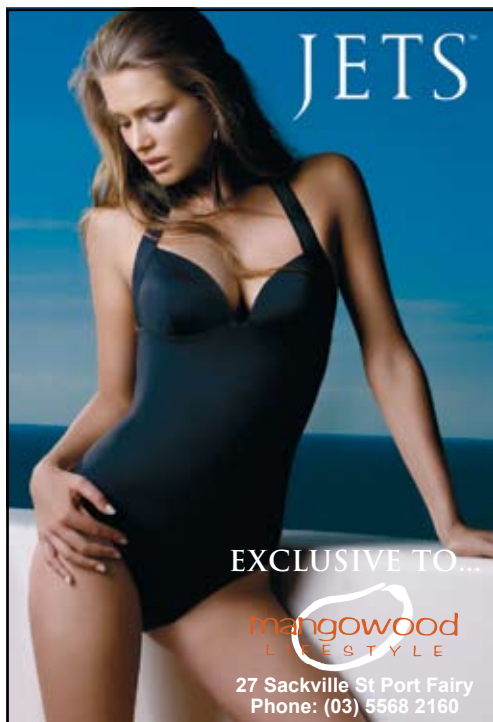
Enjoy a bottle of wine from Cathcart Ridge

Estate Winery, on our deck or in our warm welcoming restaurant

OPEN 7 DAYS

t: (03)5568 1884 f: (03)5568 1884

e: wisharts@hotmail.net.au



JETS™

EXCLUSIVE TO...

mangowood
LIFESTYLE

27 Sackville St Port Fairy
Phone: (03) 5568 2160

If The Shoe Fits

**SHOES
BAGS
ACCESSORIES
OPEN 7 DAYS**

NEW SEASON STOCK
AUGUST SEPTEMBER OCTOBER

2/8 BANK STREET
PORT FAIRY
TELEPHONE: (03) 5568 1086



port fairy travel & accommodation centre
ph: **55683150**

northeast stockdale & leggo port fairy
ph: **55682099**

mm hearn architectural homes
ph: **55681745**

Travelscene

shop2/54 sackville st, port fairy
www.hearns.com.au

oscars waterfront boutique hotel the enviable river front location...

Oscars, a boutique hotel situated on the Moyne River overlooking the marina of yachts, in historic Port Fairy.

Oscars features one suite and six individually decorated king size rooms all with stunning views.

Relax in style in the grand drawing room, with open fire, which offers the perfect retreat.

Enjoy a gourmet breakfast cooked by our resident chef, served in the dining room or on the spacious verandah.



stunning views



resident chef marina of yachts rooms with a view

www.oscarswaterfront.com

41b gipps street port fairy vic 3284 ph: 03 5568 3022

Australian, New Zealand Clothing and Accessories

LIZZIES
of Port Fairy

50 Sackville Street • ph: (03) 5568 3107



DUBLIN HOUSE INN, built in 1855, is a charming restored building with quality accommodation and Port Fairy's popular award winning a la carte Restaurant offering fresh local produce served in traditional French and Mediterranean styles.

Fully licensed.

Proprietors: Nicholas Strapp & Michelle Goyen
57-59 Bank Street, Port Fairy Ph: (03) 55682022

COLIN ROBERTSON
REAL ESTATE P/L

PORT FAIRY accommodation

Colin Robertson Real Estate offers a range of accommodation to suit all budgets. Call our friendly staff.

COLIN ROBERTSON REAL ESTATE

12 Bank Street, Port Fairy 3284

Ph: 03 5568 1904 Fax: 03 5568 2526

info@colinrobertson.com.au

www.colinrobertson.com.au



WHERE THE PAST IS THE PRESENT

this National Trust Hotel with attached Comfort Inn blends old-world charm with modern amenities.

★★★★ MOTEL UNITS
★★★★ HERITAGE LOG-FIRE COTTAGES

The quality, history, comfort and service of Seacombe House - a delight to remember.



Cnr Cox and Sackville Streets Port Fairy 3284

T 03 5568 1082 F 03 5568 2323

E seacport@fc-hotels.com.au www.seacombehouse.com.au



*hand made jewellery
with style!*

DESIGN YOUR OWN JEWELLERY
WITH CREATIVE IDEAS FROM OUR
QUALIFIED JEWELLER, BROOKE.

*Come in and see our fantastic range
of jewellery, watches and clocks.*

LESKES JEWELLERS

*Watch & jewellery sales,
repairs & individual quality designs*

23 BANK STREET, PORT FAIRY
PH: (03) 55683133



Fresh Local Produce
HEAD CHEF: Shae Bedwell

Cnr Cox & Sackville Sts Port Fairy

telephone: 03 5568 3058

TheStagInn@bigpond.com

www.seacombehouse.com.au

*invest in knowledge
and experience*



Sinclair & Wilson Investment Services
are proud to be associated with the
Port Fairy Spring Music Festival.

Sinclair Wilson offer specialised knowledge in the areas of:

- Investments • Superannuation
- Centrelink • Retirement planning
- Self-managed superannuation
- Direct equities • Taxation planning



SINCLAIR & WILSON
Investment Services Pty. Ltd.

177 Korolt St., Warrnambool.

Ph: 5564 0555 Fax: 5564 0599

Email: info@sinclairwilson.com.au

OPEN 'TIL TEN
serving coffee, cakes and cocktails
'til 10pm during the festival




*'open fires -
warm atmosphere'*

THE AGE
GOOD FOOD GUIDE
2001-2004

THE VICTORIA HOTEL
42 BANK STREET PORT FAIRY
5568 2891 vichotel.com

Shearwater
HOUSE
BED & BREAKFAST



**LOCATED ON THE BANKS
OF THE MOYNE RIVER,
ELEGANT AND STYLISH.**
Architect designed, unique ambience
complemented by the natural beauty
of the river and marina.

Guests' lounge, breakfast room and terrace share
panoramic vistas of the river and direct access to
the wharf only metres away. Five en-suite rooms
with queen or twin beds.

A choice of fine dining at one of Port Fairy's many
restaurants and cafes, shopping at boutique gift and
clothing shops, all within walking distance.

JOY & JOHN MARWOOD
53 GIPPS STREET, PORT FAIRY, VIC 3284
PH: 03 5568 1081 M: 0438 504 577
FAX: 03 5568 2981 E: shearwbb@hotmail.net.au
www.shearwaterhouse.com.au

 **AFFORDABLE
ACCOMMODATION IN THE
HEART OF PORT FAIRY**

 **56 Sackville Street
Port Fairy 3284
Ph. 5568 1800**

centralmotel@port-fairy.com
portfairymotel.com.au

Central Motel
PORT FAIRY

The blue stone building offers a 3.5
star rating, 19 units tucked away in
a quiet cul de sac set in landscaped
gardens off the main street of Port
Fairy. Offering our guests a quiet
retreat to recharge and relax. Step
out onto Sackville Street and be
amongst the boutiques, restaurants,
hotels, cafes and galleries that make
up the very essence of Port Fairy.

Central Motel offers guests a
BBQ and outdoor setting to
reflect on your days events and
plan your next days adventures!




 **McLEAN'S
PHARMACY**

**35-37 SACKVILLE STREET
PORT FAIRY**

**TELEPHONE: 5568 1083
AFTER HOURS: 5568 7212**

 **Guardian**

Whale Bone Gallery

39a Bank St.,
Port Fairy

Tel: 0355 682855

admin@portfairgallery.com

www.portfairgallery.com

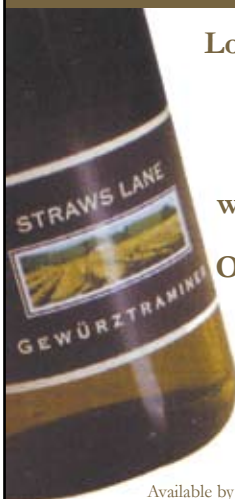
paintings
jewellery
sculpture
silk
glass
ceramics
leadlight

STRAWS LANE WINES

Long term sponsors
& supporters
of the festival.

The winery
welcomes visitors.

Open weekends &
public holidays



Available by mail, cellar door or winery sales.

1282 Mt Macedon Road Hesket

(Cnr Mt Macedon Rd and Straws Lane)

Visit Mt Macedon or Woodend Melway 509 H9

Ph: 03 5427 0442



breakfast | lunch | dinner

rebecca's

cafe & ice cream

70 - 72 Sackville St.

Port Fairy

p: 03 5568 2533

we can help

YOU

For all your Legal
requirements trust your
local team of friendly
professionals.

- Commercial
- Litigation
- Personal Injury
- Business Law
- Family Law
- Criminal Law
- Estate Administration
- Conveyancing
- Planning + Local Government

5560 2100

121 Kepler Street, Warrnambool

5599 2504

118 Dunlop Street, Mortlake

5568 1402

38 Bank Street, Port Fairy

5592 1666

99 High Street, Terang

legal services

TL
TAIT
LEISHMAN
TAYLOR
LAWYERS



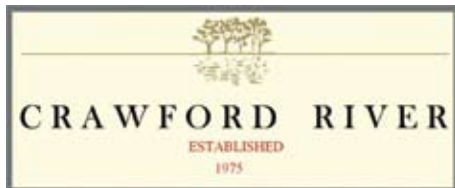
WS404047-JP-17/3

• CAFE • HOMEWARES
DELI • WINE • CLOTHING



BELLA CLAIRE GOURMET HOUSE

28 BANK STREET PORT FAIRY
OPEN 7 DAYS
PH/FAX: (03) 5568 1610



*From the overture to the coda, enjoy the
symphony of flavours and harmonious
nuances that the wines of
CRAWFORD RIVER have to offer.*

John Thomson has been meticulously crafting
his distinctive wines for three decades.

Tightly structured, intensely complex and
seamlessly balanced, these locally grown and
vinified wines are, indeed, music to one's ears.

*Widely available in Port Fairy,
or phone the Cellar Door on: 5578 2267.*

www.crawfordriverwines.com

time&tide
GALLERY CAFE

beachfront art food coffee

NOW OPEN
for breakfast, brunch,
lunch and afternoon tea
from 9.30am

THURSDAY TO MONDAY
9.30am to 5pm

21 THISTLE PLACE PORT FAIRY
Telephone 5568 2134

Wills Estate Planning

To ensure peace-of-mind and avoid
unintended beneficiaries receiving your
property, talk to Lawyer James Nicol
about Wills & Estate Planning.

(03) 5560 2000

1a Liebig St. Warnambool.

www.maddenslawyers.com.au

MADDENS LAWYERS

acknowledgements

THANK YOU FOR THE GENEROUS DONATIONS OF:

Marcia Neave, Richard & Sally Douglas, Ian & June Marks, Diane Luhrs, Anne Cebon, Brian Dunlop & Lynne Strachan, Elisabeth Harvey, Allan & Maria Myers, Eve McGlashon, Peter Barcham, May Cahir, Joan & Bryan Hoy, Brian & Suzanne Smyth, Gillian & Richard Trahair, Noel Birch, Harold Fletcher, Skye McGregor, Richard & Carol Smallwood, Gwenda Wallace, Nancy Robinson. As at 30th June, 2006.

thank you

FUNDING:

Arts Victoria, Moyne Shire Council, FJ Foundation, Alan Lane Foundation

LOCAL BUSINESSES:

Portofino on Bank, Francis & Francis, Port Fairy Confectionary

SET DESIGN & CONSTRUCTION:

Paul Kathner, set design, Scenic Studios, set construction.



WE ACKNOWLEDGE THE SUPPORT OF OUR GENEROUS SPONSORS



**ARTS
VICTORIA**



APRA AMCOS



MADDENS LAWYERS



YAMAHA



**STRAWS LANE WINES
THE ALAN LANE FOUNDATION**



BOOKING & TICKETS

Peter Strickland,
Ticketing Co-ordinator
71 Cox Street,
Port Fairy VIC 3284
Tel: (03) 5568 1269
Fax: (03) 5568 2069

ACCOMMODATION ENQUIRIES

Andrea Lowenthal,
Port Fairy & Region
Visitor Information Centre
Bank Street,
Port Fairy VIC 3284
Tel: (03) 5568 2682
Fac: (03) 5568 2833
Email: vic@moyne.vic.gov.au
www.moyne.vic.gov.au

FESTIVAL ADMINISTRATION...

Port Fairy Spring Music Festival Inc
A0021392G ABN 513 9275 4636
P O Box 53, Port Fairy
Victoria Australia 3284
Tel: +61 3 5568 3030
Mobile: 0402 218 341
Email: springfest@port-fairy.com
www.portfairyspringmusicfestival.com

PATRONS

Lauris Elms, AM, OBE
Peter Sculthorpe, AO, OBE

FESTIVAL COMMITTEE







Chairman: Paul Clarkson
Festival Director: Stephen McIntyre
Administrator: Sandra Plummer
Secretary: Mary Goodall
Treasurer: James Nicol
Production Manager: Dawn Holland
Port Fairy Venue Manager: Barry Levinson
Committee Members: Margaret Broers,
Brenda Hampson, Joy Potter, Eda Ritchie,
Ruth Walter, Jennifer Whitehead

MAILING LIST

If you would like to be placed on the mailing list for information, please call the Festival office on (03) 5568 3030, write to the Port Fairy Spring Music Festival, PO Box 53, Port Fairy VIC 3284 or send an email to springfest@port-fairy.com

ALL DETAILS ARE CORRECT AT THE TIME OF PRINTING. PERFORMERS, WORKS AND VENUES SUBJECT TO CHANGE WITHOUT NOTICE.
ALL TICKET SALES ARE FINAL.

map index

- 1 ST JOHN'S CHURCH
 - 2 LECTURE HALL 
 - 3 **CINEMA/COMMUNITY CENTRE** 
FESTIVAL BOOKING OFFICE 
 - 4 DRILL HALL 
 - 5 THE VICTORIA HOTEL
 - 6 CONSOLIDATED SCHOOL 
 - 7 WISHART GALLERY
 - 8 WHALE BONE GALLERY
-  VISITOR INFORMATION CENTRE AND BUS DEPOT



doors open 15 minutes before each concert and latecomers will not be admitted into the auditorium until there is a suitable break in the performance.

eating, drinking and smoking are not permitted inside the auditorium, and the use of cameras and recording equipment is strictly forbidden.

mobile phones and watch alarms should be turned off. dress casual.

how to make your booking

1. Firstly detach the form (on your right) and complete your personal details in the area.
2. Next, turn over the page to find the booking form. Simply fill in the number of tickets required next to the amount, remembering to indicate full price or concession.
Calculate your sub-totals and don't forget to fill in the grand total, including the handling fee of \$2 per order.
3. It's very important to fill in the payment details so please don't forget this step.
4. Bookings may be made on-line. Visit the festival website at:
www.portfairyspringmusicfestival.com.au and follow the prompt.
5. Finally you can either post the completed form to:

Peter Strickland,

Port Fairy Spring Music Festival Ticketing,

71 Cox Street,

Port Fairy VIC 3284

Or phone (03) 5568 1269 or fax both sides to (03) 5568 2069

refund policy: There will be no refund on or return of tickets allowed unless events are sold out or cancelled. In the case of sold out events, tickets can be returned and every attempt will be made to resell them on your behalf. If a concert is booked out prior to receiving your booking, a refund cheque will be sent with your tickets or your credit card payment reduced accordingly. Your name will be placed on a waiting list for booked out concert(s) and we will endeavour to contact you if tickets become available.

handling charges: Mail, telephone, fax and credit card bookings will attract a handling charge of \$2 per total transaction. This charge has become necessary to assist in meeting the administration costs of the Festival and is in line with normal booking practice.

disclaimer: All details are correct at the time of printing.
The Festival reserves the right to cancel and/or change details of performers, programmes and venues without notice.



PERSONAL DETAILS

NAME: _____

ADDRESS: _____

____ POSTCODE: _____

PREFERRED TELEPHONE: _____

CONCESSION DETAILS

PLEASE INDICATE THE TYPE OF CONCESSION
EG. AGED, UNEMPLOYED, DISABLED OR STUDENT

CONCESSION NUMBER: _____

Concession ticket prices apply to means tested holders of Government pensions, such as Aged, Invalid, TPI and Supporting Parents Pensions, Unemployed, full-time Student. Please quote your concession number on the booking form in the space provided or enclose a photocopy of your Student Concession pass if you are booking tickets with the Student Package. Travel concessions, Seniors Cards and Veteran Affairs Gold or White Treatment Cards may not be used as proof of eligibility as they are not means tested.

PAYMENT METHOD

CHEQUE OR MONEY ORDER MADE PAYABLE TO
PORT FAIRY SPRING MUSIC FESTIVAL

PLEASE CHARGE MY CREDIT CARD AS CIRCLED BELOW:

BANKCARD MASTERCARD VISA

CARD NUMBER

EXPIRY DATE: _____

CARD HOLDER'S NAME: _____

SIGNATURE: _____

TICKETING

BOOKING FORM TICKET PRICES

NAME:

FRIDAY 6TH OCTOBER

			FULL PRICE X NO OF TICKETS	CONCESSION X NO OF TICKETS	AMOUNT
1	8PM	Tankstream Quartet	\$30x	\$25x	= \$
2	10PM	Classic Vibes	\$20	\$16	= \$

SATURDAY 7TH OCTOBER

3	10AM	Ke Lin	\$20	\$16	= \$
4	10AM	Cameron Hill & Bonnie Brown	\$20	\$16	= \$
5	11.30AM	All the Pleasures!	\$20	\$16	= \$
6	11.30AM	Byar!	\$20	\$16	= \$
7	12.45PM	Lunch with Friends	\$25	No Concession	= \$
8	2PM	Tankstream Quartet with Stephen McIntyre	\$20	\$16	= \$
9	3.30PM	Marshall McGuire & Riley Lee	\$20	\$16	= \$
10	3.30PM	Igor Machlak & Olga Kharitonova	\$20	\$16	= \$
11	5PM	'Better the Diva You Know...!'	\$30	\$25	= \$
12	8.15PM	The Alcoa Portland Aluminium Gala Orchestral Concert	\$30	\$25	= \$
13	10.15PM	Stiletto Sisters	\$20	\$16	= \$

SUNDAY 8TH OCTOBER

14	10AM	Benaud Piano Trio	\$20	\$16	= \$
15	11.30AM	John Dowland	\$20	\$16	= \$
16	11.30AM	Michael Kieran Harvey	\$20	\$16	= \$
17	12.45PM	Lunch with Friends	\$25	No Concession	= \$
18	2PM	Bach at the Summit	\$20	\$16	= \$
19	2PM	Not too Near... Not too Far	\$20	\$16	= \$
20	3.30PM	Jazz in the afternoon	\$20	\$16	= \$
SUB TOTAL:					= \$
HANDLING FEE FOR THIS ORDER:					+ \$ 2
TOTAL:					= \$

STUDENT PACKAGE

The following concerts are offered to full time students under the age of 25. Refunds will not be given for these tickets and a maximum of 20 tickets per concert will be available at this price. A photocopy of a students ID will be required with this booking.

6	11.30AM	Byar!	\$5		= \$
14	10AM	Benaud Piano Trio	\$5		= \$
19	2PM	Not too Near... Not too Far	\$5		= \$
HANDLING FEE FOR THIS ORDER:					+ \$ 2
TOTAL:					= \$

MAKE SURE YOU HAVE COMPLETED BOTH SIDES OF THIS ORDER FORM



Where fine food, fine wine and ambience harmoniously combine to create the ultimate dining experience.



"Portofino on bank spiritedly refreshes jaded palates with innovative Med and Mid-East cuisine made with top-quality Victorian produce..."

"The wine list is first-class, spanning old world and new world. The ambience, calm and convivial; the décor, unstuffy; the staff, savvy."

The Age Good Food Guide

Chefs Hat Award 2005 and 2006

26 bank street port fairy
telephone: (03) 5568 2251

portofino **p**