



PORT FAIRY

# *Spring*

MUSIC FESTIVAL

12<sup>TH</sup>-14<sup>TH</sup> OCTOBER 2012

*awakenings*

# AWAKENINGS

**ANNA GOLDSWORTHY**  
Festival Director



Welcome to the 2012 Port Fairy Spring Music Festival.

Our theme this year is inspired by the Spring of our name, and we offer you a program of Awakenings. Awakenings can take many forms – seasonal, sensory, artistic, intellectual, romantic – and in this program we celebrate all of these.

We welcome some of Australia's finest ensembles and soloists, performing chamber music favourites alongside contemporary repertoire to stimulate and inspire.

Embrace the season with Beethoven's Spring Sonata; gasp at the musical dawn of Haydn's Sunrise Quartet; revel in the early flowering of Mendelssohn's great Octet.

Lest all these awakenings provoke insomnia, allow us to soothe you with lullabies, or with Bach's Goldberg Variations in exciting reimagined form.

*"Inspiration is an awakening, a quickening of all man's faculties..."*

- Giacomo Puccini

**PAUL CLARKSON AO**  
Festival Chairman



The Port Fairy Spring Music Festival is one of Victoria's major music events, bringing a focus to the region and offering an idyllic destination for arts-loving tourists.

The Festival relies on and is grateful for the on-going support of the Victorian Government and the Shire of Moyne. It is also very appreciative of the generosity of its sponsors and the many individuals who make donations to assist the Festival in presenting high quality performances each year.

Once again I sincerely thank the Artistic Director, Anna Goldsworthy, the Festival Board of Management and our dedicated volunteers for their commitment and hard work which help make the Festival the success it continues to be.

Many performances sell out early in the booking period and I suggest you secure your tickets as soon as you receive this program brochure.

We look forward to welcoming you to Port Fairy in October.

# WELCOME TO THE PORT FAIRY SPRING MUSIC FESTIVAL

Port Fairy is truly a town for all seasons.

Spectacular beaches for summer, autumn brings 'folk' from far and wide, winter welcomes the whales and come spring, it's all about beautiful ensemble music.

This year's Port Fairy Spring Music Festival will showcase a stunning selection of classical and contemporary music by some of Australia's most exciting musicians.

There are also artist talks and workshops, theatre performances, visual arts and comedy to enjoy.

All of this is set against the incomparable backdrop of historic Port Fairy.

It's not hard to see why this Festival has become a significant tourism drawcard for the region, a highlight of Victoria's arts calendar and an event the Victorian Government is proud to support.

Congratulations to the team, including the many dedicated volunteers and Friends of the Festival, who work so hard to bring this superb event to life each October.

Spring to it and enjoy the 2012 Port Fairy Spring Music Festival.

**TED BAILLIEU, MLA**  
Premier and Minister  
for the Arts



## PORT FAIRY

One of Victoria's top tourist destinations, Port Fairy is a unique historic coastal town on the Great Ocean Road.

Since 1990, it has provided a special environment for the annual Port Fairy Spring Music Festival. Visitors to this special 'festival' town enjoy the ambience and intimacy afforded by its easy accessible venues.

There is a vast array of colourful, friendly cafés and restaurants and accommodation ranges from the luxurious to the budget oriented.

Local attractions include a world-class golf course and excellent beach walks. The Port Fairy and Region Visitor Information Centre (03 5568 2682) would be happy to provide more details.

Each concert usually lasts about one hour so patrons can enjoy a range of events over the weekend.

## THE FESTIVAL AT A GLANCE

### FRIDAY 12TH OCTOBER

8pm	Birdsong at Dusk	Reardon Theatre	p5
8pm	Song of The Birds	Lecture Hall	p6
10pm	Deborah Conway and Willy Zygier	Reardon Theatre	p7

### SATURDAY 13TH OCTOBER

10am	Brahms Reawakening	Reardon Theatre	p8
10am	Conversation: Musical Awakenings	Lecture Hall	p9
11.30am	To the Earth	Reardon Theatre	p10
11.30am	Already it is Dusk	St John's Church	p11
12.45pm	Lunch	Drill Hall	p12
2pm	Overlander	Reardon Theatre	p13
2pm	Spring Song	Lecture Hall	p14
3.30pm	Voicing Emily	Reardon Theatre	p15
3.30pm	Lullabies: If That Diamond Ring Turns Brass	Lecture Hall	p16
5pm	Sing Your Own Complete Musical	Drill Hall	p17
8.15pm	Gala Concert	Reardon Theatre	p18
8.15pm	The Music and Poetry of Gardens	Lecture Hall	p19
10.15pm	Festival Club	Reardon Theatre	p20

### SUNDAY 14TH OCTOBER

10am	Mentorship	Lecture Hall	p21
10am	Goldberg Variations	Reardon Theatre	p22
11.30am	Variations on Goldberg	Reardon Theatre	p23
11.30am	Sacred and Profane	St John's Church	p24
12.45pm	Lunch	Drill Hall	p11
2pm	Rite of Spring	Reardon Theatre	p25
3.30pm	Syzygy meets Greta Bradman	Lecture Hall	p26
3.30pm	Mount Gambier Generations in Jazz	Drill Hall	p27

Free Festival Events p28

## Friday 12th

### THE KAWAI OPENING CONCERT

## BIRDSONG AT DUSK

DATE | Friday 12th October  
TIME | 8pm  
VENUE | Reardon Theatre

TICKETS / \$40 CONCESSION / \$32

#### Australian String Quartet

Kristian Winther / violin  
Anne Horton / violin  
Stephen King / viola  
Rachel Johnston / cello

Cameron Hill / violin

William Barton / didgeridoo

Anna Goldsworthy / piano

**BEETHOVEN** / *Violin Sonata No.5 in F major, Opus 24 'Spring'*  
**BARTON** / *Petrichore*

*Birdsong at Dusk for string quartet and didgeridoo*

#### Interval

**SCHUMANN** / *Piano Quintet in E flat major, Op. 44*

The festival begins with a celebration of Spring and the natural world. Gifted young violinist Cameron Hill returns to Port Fairy to perform Beethoven at his most genial: the beloved Violin Sonata No. 5, known as the 'Spring' sonata. Leading didgeridoo-player William Barton joins forces with the Australian String Quartet, performing two compositions inspired by the Australian outback: *Petrichore*, evoking the release of natural oils after rainfall hits the rocks of the earth, and *Birdsong at Dusk*.

The concert concludes with Schumann's brilliant Piano Quintet, dating from 1842, his year-long Spring of chamber music, performed by the Australian String Quartet and Festival Director Anna Goldsworthy.

"When I first heard William playing...it was summoning up the whole landscape. It was a revelation."

- Peter Sculthorpe



Presented in association with Musica Viva. This concert is generously sponsored by Kawai.

**KAWAI**  
THE FUTURE OF THE PIANO



## SONG OF THE **BIRDS**

DATE | Friday 12th October  
TIME | 8pm  
VENUE | Lecture Hall

TICKETS / \$25 CONCESSION / \$19

Josephine Vains / cello  
Benjamin Martin / piano  
Peter Burch / narration



J.S. BACH / *Prelude and Fugue in F major from Book 2*  
J.S. BACH / *Adagio from Toccata in G major, arr. Casals*  
BOCCHERINI / *Allegro from Sonata A major*  
SCHUMANN / *Traumerei from Kinderszenen*  
SAINT-SAENS / *The Swan*  
POPPER / *Spanish Dance No.2*  
DE FALLA / *Nana*  
CHOPIN / *Introduction and Grande Polonaise Brillante*  
J.S. BACH / *Prelude from 1st Solo Suite for Violoncello*  
BENJAMIN MARTIN / *CASA(L)S*  
TRAD. / *Song of the Birds El Cant dels Ocells*

This festival premiere, created by innovative cellist Josie Vains, is dedicated to the legendary cellist and conductor Pablo Casals. Vains is joined by brilliant pianist and composer Benjamin Martin to celebrate Casals' music, legacy and human spirit.

The concert will be narrated by Melbourne music personality, Peter Burch. Inspired by *Song of the Birds*, the Catalan carol with which Casals concluded every concert, this curated performance combines readings and favourite works, along with a new work especially composed for the concert by Benjamin Martin.

*"I began the custom of concluding my concerts with the melody of an old Catalan carol, the 'Song of the Birds'. It is a tale of the Nativity; how beautiful and tender is that tale, with its reverence for life and for man, the noblest expression of life!"*

- Pablo Casals

## DEBORAH CONWAY **AND** WILLY ZYGIER

DATE | Friday 12th October  
TIME | 10pm  
VENUE | Reardon Theatre

TICKETS / \$25 CONCESSION / \$19

Deborah Conway is a significant and eloquent contributor to Australian music, whose songs chronicle the essential elements of life, love, loss, memory, the mundane and the spiritual. Restless and confounding, her powerful voice and presence has fascinated audiences for the past 30 years.

Joined by long-term partner and collaborator, Willy Zygiel, she performs a new program, exploring the breadth of sound that can be extracted from acoustic instruments and vocals.

The songs are about the stuff that makes people furious, miserable, wistful, amused, curious...and even happy.

*"Blessed with an angelic voice, deft at lyrical wordplay and armed with a seemingly inexhaustive melody well, Conway – and partner Zygiel – create songs which become best friends for life."*

- Daily Telegraph



# Saturday 13th

## BRAHMS

## REAWAKENING

DATE | Saturday 13th October  
TIME | 10am  
VENUE | Reardon Theatre

TICKETS / \$25 CONCESSION / \$19

### Ensemble Liaison

David Griffiths / clarinet  
Svetlana Bogosavljevic / cello  
Timothy Young / piano

GRAINGER / *Blithe Bells, Shepherd's Hey*

DE FALLA / *Six Popular Songs*

BRAHMS / *Clarinet Trio op.114*

Ensemble Liaison celebrates the conviviality of chamber music playing, combining inventive programs with a lively and engaging performance style. Formed in Melbourne in 2006, it has rapidly become a favourite of audiences and critics alike.

This exciting program celebrates Brahms' late musical reawakening. Inspired by the playing of clarinetist Richard Mühlfeld, he stepped out of retirement to compose his Clarinet Trio in A minor op.114.

This profound and moving work remains the ultimate expression of this combination of instruments. Ensemble Liaison performs it alongside de Falla's Six Popular Songs, expressing the unique sounds of Spain, and two of the most popular arrangements of Australia's own Percy Grainger.

*"One of Australia's most imaginative chamber ensembles."*

- *The Australian*



## CONVERSATION:

## MUSICAL AWAKENINGS

DATE | Saturday 13th October  
TIME | 10am  
VENUE | Lecture Hall

FREE EVENT / BOOKINGS NOT REQUIRED

### Anna Goldsworthy

Iain Grandage

Deborah Conway

Benjamin Martin

Festival Director Anna Goldsworthy talks to composer/cellist Iain Grandage, violinist/conductor Kristian Winther, singer/songwriter Deborah Conway, and composer/pianist Benjamin Martin about the influences, mentors, life experiences and music that have shaped their diverse lives as musicians. An investigation into the creative awakening that is musical composition.



## TO THE **EARTH**

DATE | Saturday 13th October  
TIME | 11.30am  
VENUE | Reardon Theatre

TICKETS / \$25 CONCESSION / \$19

Claire Edwardes / percussion

J.S. BACH / *Prelude from Violin Partita No.2 in E minor*  
CHICK COREA / *Children's songs 1, 6 & 18*  
TIM DARGAVILLE / *Invisible Dance*  
STUART GREENBAUM / *April Revisited*  
DAVID MASLANSKA / *Variations on Lost Love*  
ASTOR PIAZZOLLA / *Libertango*  
FREDERIC RZEWSKI / *To the Earth (Flower Pots)*  
PER NORGARD / *I Ching 'The gentle the penetrating'*  
MICHIO KITAZUME / *Side by Side*

Percussionist Claire Edwardes is one of Australia's most charismatic performers. She is the winner of several international competitions, including the Tromp Percussion Competition (2000) and Llangollen International Instrumentalist (2001), and has performed concertos with all the major Australian orchestras.

Claire's informal style of presentation invites the audience into the often unfamiliar world of percussion. This special program evokes the awakenings of Spring and first love, in transcriptions and new music for marimba, timpani, kalimba, temple bowls and drums.

*"Electric from start to finish."*

- *The Age*



## **ALREADY** IT IS DUSK

DATE | Saturday 13th October  
TIME | 11.30am  
VENUE | St John's Church

TICKETS / \$25 CONCESSION / \$19

### Australian String Quartet

Kristian Winther / violin  
Anne Horton / violin  
Stephen King / viola  
Rachel Johnston / cello

GORECKI / *Already it is Dusk*

HAYDN / *String Quartet No.78 in B flat, Op. 76 'Sunrise'*

RICHARD MEALE / *Cantilena Pacifica from String Quartet No.2*

The Australian String Quartet returns to the Port Fairy Spring Music Festival in its electric new line-up, as violinist Kristian Winther and violist Stephen King join violinist Anne Horton and cellist Rachel Johnston, a configuration that is already widely acclaimed.

The quartet presents a program of haunting night music from Meale and Gorecki to the celebrated 'Sunrise Quartet' of Haydn. Join the Australian String Quartet on this unique journey through dreams and awakenings.

*"A powerful new dynamism marks their performances."*

- *The Australian*



Presented in association with Musica Viva.



**LUNCH**SATURDAY 13TH  
& SUNDAY 14THTIME | 12.45pm  
VENUE | Drill Hall

TICKETS / \$30

**Adelaide Chamber Singers***Sopranos*

Christie Anderson

Emma Borgas

Emma Horwood

Alexandra Stubberfield

*Altos*

Victoria Coxhill

Courtney Green

Karina Jay

Bethany Ide

*Tenors*

David Hamer

Andrew Linn

Robin Parkin

Martin Penhale

*Basses*

Andrew Bettison

Timothy Marks

Jordan Rose

Lee Thompson

**Carl Crossin / director**

Back by popular demand, the Adelaide Chamber Singers will entertain and serenade you with the musical and literary wit of Flanders & Swan, Noel Coward, Tom Lehrer and Randy Newman.

**VISIT OUR WEBSITE**
[www.portfairyspringfest.com.au](http://www.portfairyspringfest.com.au)

In addition to program details and the online booking facility, our site now includes audio, video, artist interviews and a diary to view the Festival program. It links through to our new Facebook and Twitter pages and features images of Port Fairy and the surrounding area. We plan for this site to become a repository of content: audio, video and program notes that people from all around the world will find of interest.



Please come and visit.  
We would love to hear your feedback.

**OVERLANDER**DATE | Saturday 13th October  
TIME | 2pm  
VENUE | Reardon Theatre

TICKETS / \$25 CONCESSION / \$19

**Overlander**

William Barton / didgeridoo

Claire Edwardes / percussion

Iain Grandage / cello

Mel Robinson / electric cello, voice

Formed for a tour of the Dampier Peninsula in 2007, Overlander brings together four of Australia's leading musicians, combining the funky rumbles of didgeridoo superstar William Barton, the dulcet vocals of singer/songwriter Mel Robinson, the boundless charm and wit of composer/performer extraordinaire Iain Grandage and the voluptuous strength and energy of percussionist Claire Edwardes.

Overlander's unusual instrumental force of voice, cello, percussion, didgeridoo and electric cello makes for a completely different concert experience. Its program features works composed and arranged exclusively by members of the group.

Each musician has a different approach to musical language and their works combine to form a rich tapestry of sonic colours. With its casual approach to concert giving, Overlander creates a deeply evocative and poignant soundscape that is at once, moving, virtuosic and eclectic.



This performance is generously sponsored by the Isobel and David Jones Family Foundation.

## SPRING SONG

DATE | Saturday 13th October  
TIME | 2pm  
VENUE | Lecture Hall

TICKETS / \$25 CONCESSION / \$19

Anna Eklund-Tarantino / soprano  
Tamara-Anna Cislowska / piano

MENDELSSOHN / *Grüss Op 19a No. 5*  
MENDELSSOHN / *Neue liebe Op 19a No. 4*  
MENDELSSOHN / *Andres Maienlied (Hexenlied) Op 8 No. 8*  
STRAUSS / *Frühling and September from Vier Letzte Lieder*  
STRAUSS / *Frühlingsfeier Op 56 No. 5 R. Strauss*  
STRAUSS / *Morgen Op 27 No. 4*  
HAYDN / *Nun beut die Flur from Die Schöpfung (The Creation)*  
MOZART / *Exsultate Jubilate*  
GRIEG / *Varen (The Spring) Op 34*  
PETER BENGTTSSON / *Dreamaria*  
BENJAMIN STERN / *Awakening*  
CHARPENTIER / *Depuis le Jour*  
BO NILSSON / *A Spirit's Whisper*

Our international guest, the vivacious Swedish soprano Anna Eklund-Tarantino, joined by one of Australia's most respected pianists, Tamara-Anna Cislowska, for an engaging program inspired by the music of Spring.

Anna Eklund-Tarantino has performed over thirty leading operatic roles. She is a much sought after singer in Sweden and throughout Europe, and has appeared for the Royal Opera, the Théâtre des Champs-Élysées in Paris and at the Spoleto Festival. In this delightful program, featuring many favourites of the repertoire, she celebrates the annual reawakening that is Spring.



## VOICING EMILY

DATE | Saturday 13th October  
TIME | 3.30pm  
VENUE | Reardon Theatre

TICKETS / \$25 CONCESSION / \$19

Theresa Borg / soprano  
Caity Fowler / soprano  
Helen Noonan / soprano  
Ken Murray / guitar  
Josephine Vains / cello  
Jane Hammond / piano

*Musical Direction by Jane Hammond*

*Created by Helen Noonan*

Helen Noonan's critically acclaimed lieder-opera examines the life and art of Emily Dickinson – the nineteenth-century American poet, genius, recluse, woman in white.

In this dramatic presentation, the poems and letters of Dickinson are set to music by three Melbourne composers: Jane Hammond, Greg Mason and Eddie Perfect. Her extraordinary writing is given voice by three of this country's finest singer-actors: Helen Noonan, Theresa Borg and Caity Fowler.

*Voicing Emily* combines the intimacy and poetry of art song with the theatricality and drama of opera, in a performance that will thrill and move you.

*"A work of ravishing beauty and rare artistic distinction."*

- John Slavin, *The Age*





**LULLABIES:****IF THAT DIAMOND  
RING TURNS BRASS**

DATE | Saturday 13th October  
TIME | 3.30pm  
VENUE | Lecture Hall

TICKETS / \$25 CONCESSION / \$19

Anna McMichael / violin  
Tamara-Anna Cislowska / piano



MAURICE RAVEL / *Berceuse sur le nom de Gabriel Faure*  
IGOR STRAVINSKY / *Berceuse from The Firebird*  
GRAEME KOEHNE / *Lullaby*  
ELENA KATS-CHERNIN / *Lullaby*  
DAMIAN BARBELER / *Lullaby*  
KATE MOORE / *Broken Rosary*  
ROBERT ASHLEY / *Lullaby*  
GEORGE ENESCU / *Chanson pour Berceur* from  
*Impressions d'Enfance*  
JEAN SIBELIUS / *Berceuse*  
COR FUHLER / *18 Spoonfuls*  
BRETT DEAN / *Berceuse from Berlin Music*  
CAMILLE SAINT-SAENS / *Berceuse*  
DAVID CHISHOLM / *Axeman Lullaby*  
GERARD BROPHY / *Sostenuto*  
ANDREW FORD / *Cradle Song*



After all the awakenings, we offer you a program of lullabies. In this evocative performance, curated by violinist Anna McMichael, lullabies for violin and piano are combined with art design by the French visual artist Isabelle Vigier, and sound by the Australian based Dutch composer Cor Fuhler.

Allow yourself to be soothed, consoled, seduced and inspired, by this enchanting collection of lullabies, old and new.

**SING YOUR OWN  
COMPLETE MUSICAL**

DATE | Saturday 13th October  
TIME | 5pm  
VENUE | Drill Hall

TICKETS / \$10

Michael Morley / piano and voice  
Lauren Henderson / voice  
Ali Stubberfield / voice  
Andrew Linn / voice  
Lee Thompson / voice

Michael Morley and a quartet of singers invite you to join them in *Cockeyed Optimism* and *Carefully Taught*, sing along to numbers from Rodgers and Hammerstein's *South Pacific*.

Come and be part of *Some Enchanted Evening*, demonstrate that you can more than nearly hit the notes in *This Nearly Was Mine*, reach both *Bali Hai* and low, and, above all, show that you're *In Love With A Wonderful...show*.

**NEXT YEAR**

The Port Fairy Spring Music Festival next year will be held over the weekend of 11-13th October 2013.

For updates about the Festival during the year, visit the website [www.portfairyspringfest.com.au](http://www.portfairyspringfest.com.au)

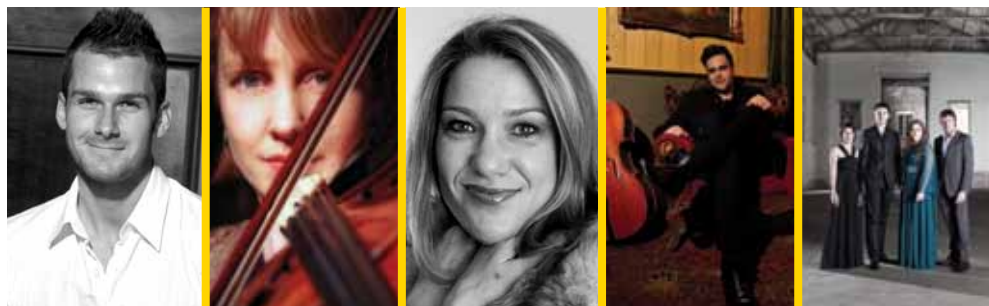


## THE NAB GALA CONCERT

**MOZART AND  
MENDELSSOHN**

DATE | Saturday 13th October  
TIME | 8.15pm  
VENUE | Reardon Theatre

TICKETS / \$40 CONCESSION / \$32



Cameron Hill / violin  
Helen Ayres / violin  
Fiona Sargeant / viola  
Blair Harris / cello  
Australian String Quartet

Kristian Winther / violin  
Anne Horton / violin  
Stephen King / viola  
Rachel Johnston / cello

## ANAM Musicians

Dafydd Camp  
Georgina Roberts  
Paul Dean  
Lloyd van't Hoff  
Nicholas Evans  
Justin Beere  
Jack Schiller  
Laura Brown  
Matthew Kneale  
Julia Brooke  
Sebastian Dunn  
Georgia Ioakimidis-MacDougall  
Claire Linquist  
Jonathan Heilbron

MOZART / *Serenade in B-flat Major, K. 361 "Gran Partita"*  
Interval  
MENDELSSOHN / *Octet in E flat major, Op. 20*

Our gala concert offers masterworks by two of the greatest musical prodigies the world has known: Mozart and Mendelssohn. The gifted young musicians of the Australian National Academy of Music return to Port Fairy, for a performance of chamber music at its grandest (and most fun): Mozart's *Gran Partita* for winds, scored for twelve winds and double bass.

After interval, we enjoy another favourite of the chamber music repertoire: Mendelssohn's great *Octet*, composed when he was just sixteen, as a birthday present for a friend. Friendship and conviviality are written into the texture of the music. This performance combines the Australian String Quartet with four friends for a performance that promises to be incandescent.



Presented in association with Musica Viva.  
This concert is generously sponsored by  
the National Australia Bank.

**THE MUSIC AND  
POETRY OF GARDENS**

DATE | Saturday 13th October  
TIME | 8.15pm  
VENUE | Lecture Hall

TICKETS / \$25 CONCESSION / \$19

Sally Mellor / piano  
Christina Hindhaugh / narrator

BEETHOVEN / *Bagatelle in E flat op 126 no 3*  
BRAHMS / *Intermezzo in E flat, op 117 no 1*  
*Rhapsody in G minor op 118, no 3*  
GRIEG / *To the Spring from Lyric Pieces*  
DEBUSSY / *Des pas sur la neige*  
*La fille au cheveux de lin*  
*Les sons et les parfums tournent dans l'air du soir*  
CHOPIN / *Nocturne in E flat op 9 no 2*

Poetry by Marvel, Milton, Shakespeare, Wordsworth,  
Whitman and Gerald Manley Hopkins.

Gardens and the natural world have long inspired poetry and music. In this unique pairing, novelist and professional reader Christina Hindhaugh presents a selection of poems that evoke gardens, interspersed with performances by Australian-born pianist Sally Mellor, now resident in England.

*"And then my heart with pleasure fills,  
and dances with the daffodils."*

- Wordsworth



## FESTIVAL CLUB

DATE | Saturday 13th October  
TIME | 10.15pm  
VENUE | Reardon Theatre

TICKETS / \$25 CONCESSION / \$19

**Tim Ferguson** / presenter  
**Festival musicians including:**  
The Australian String Quartet  
Adelaide Chamber Singers  
Ensemble Liaison  
Overlander  
Michael Morley  
Lauren Henderson

A runaway success at last year's Festival, the Festival Club reveals a hidden side of our festival artists. Join us to discover the cabaret stars, comedians, burlesque artists and jazz musos lurking beneath the classical facade.

Hosted by comedian and writer Tim Ferguson, this is a late-night talent show with a difference. You, the audience, will pick the winner...



## Sunday 14th

### MENTORSHIP

DATE | Sunday 14th October  
TIME | 10am  
VENUE | Lecture Hall

TICKETS / \$25 CONCESSION / \$19

**Helen Ayres** / violin  
**Mark Mogilevsky** / violin  
**Elena Mogilevsky** / piano

**LECLAIR** / *Sonata No.5 for two violins*  
**MOSZKOWSKI** / *Suite Op. 71 for two violins and piano*  
**SHOSTAKOVICH** / *5 pieces for two violins and piano*  
**SARASATE** / *Navarra for two violins and piano*

In this tribute to the musical awakening that is great teaching, violinist Helen Ayres performs alongside her beloved mentor, Mark Mogilevsky, in a dazzling program of violin duets accompanied by Elena Mogilevsky.

Helen and Mark have been working together for more than a decade, first as colleagues in the Melbourne Symphony Orchestra and later at the University of Melbourne. Helen describes Mark as 'a pillar of support in my life as a violinist. Mark lives as he teaches – in loving and generous service to music.'



This performance is generously sponsored by the Friends of the Port Fairy Spring Music Festival.



# GOLDBERG

## VARIATIONS

DATE | Sunday 14th October  
TIME | 10am  
VENUE | Reardon Theatre

TICKETS / \$25 CONCESSION / \$19

Caroline Almonte / piano

J.S. BACH / *Goldberg Variations BWV 988*

One of Melbourne's favourite pianists returns to Port Fairy for a performance of J.S. Bach's Goldberg Variations. Legend has it that these variations were composed for the harpsichordist Johann Gottlieb Goldberg, to ease the sleepless nights of his employer, Count Kaiserling.

Caroline Almonte discusses the provenance of this great work with Festival Director Anna Goldsworthy, before delivering a complete performance of this great, encyclopaedic masterpiece: the ultimate consolation for wakefulness.

*"Caroline Almonte showed flawless taste and expressive mastery. Technically faultless, she played everything with great spirit."*

- La Nacion, Buenos Aires



# VARIATIONS

## ON GOLDBERG

DATE | Sunday 14th October  
TIME | 11.30am  
VENUE | Reardon Theatre

TICKETS / \$25 CONCESSION / \$19

*Improvisation inspired by Bach's Goldberg Variations*

Paul Grabowsky / piano

Pianist and composer Paul Grabowsky responds to Caroline Almonte's performance of the Goldberg Variations with his own distinctive semi-improvisatory tribute.

Following a conversation with Anna Goldsworthy, he constructs an arc in loose parallel to Bach's variations, generated by texture and density not only harmonic progression, creating a sound world that is not only polyphonic but polylinguistic: an exhilarating twenty-first century response to this great work.



## SACRED AND PROFANE

DATE | Sunday 14th October  
TIME | 11.30am  
VENUE | St John's Church

TICKETS / \$25 CONCESSION / \$19



ROSS EDWARDS / *Mountain Chant*  
PAUL STANHOPE / *Deserts of Exile*  
MICHAEL NYMAN / *Miserere*  
ADRIANO BANCHIERI / *Madrigals from Il Zabaione Musicale*

Adelaide Chamber Singers  
Carl Crossin / director

The Adelaide Chamber Singers have been a passionate and innovative contributor to Australian music making for over twenty-six years. Formed in 1985 by Artistic Director and Conductor Carl Crossin, the ensemble comprises some of Adelaide's best and most experienced ensemble singers, some of whom are also emerging artists or conductors in their own right.

Today the singers take us on a journey through the sacred and the profane. After surveying the Australian landscape with Ross Edwards and Paul Stanhope, they perform Michael Nyman's *Miserere* from *The Cook, the Thief, His Wife & Her Lover*. The concert concludes with a selection from the wonderfully entertaining madrigal comedy *Il Zabaione Musicale*, or 'A Musical Pudding': a feast of love, passion and fun in the Italian Renaissance style.

## RITE OF SPRING

DATE | Sunday 14th October  
TIME | 2pm  
VENUE | Reardon Theatre

TICKETS / \$25 CONCESSION / \$19

Igor Machlak / piano  
Olga Kharitanova / piano  
Melbourne Ballet Company  
Simon Hoy / choreographer

RACHMANINOV / *Russian Song, Opus 11 No.2*  
STRAVINSKY / *Rite of Spring*

In this festival premiere, celebrated duo Igor Machlak and Olga Kharitanova perform Stravinsky's *Rite of Spring* for four hands, to accompany new choreography from the Melbourne Ballet Company.

Premiered in Paris in 1913 to a scandalised reception, Stravinsky's *Rite of Spring* signalled the beginning of a new era in art and music. The Melbourne Ballet Company was launched in March 2007, and embraces both classical and contemporary techniques. Choreographer Simon Hoy's response to Stravinsky depicts a journey into obsession. Where do drive and commitment give way to self-sacrifice and torment?

Enjoy the premiere of this new collaboration, as dancers and pianists share a stage to engage with this astonishing score.



This performance is presented in memory of the Festival's Co-founder, Michael J Easton ARAM (1995-2004).

# SYZYGY MEETS GRETA BRADMAN

DATE | Sunday 14th October  
TIME | 3.30pm  
VENUE | Lecture Hall

TICKETS / \$25 CONCESSION / \$19



Greta Bradman / voice

## Syzygy

Laila Engle / flute  
Julia Stoppa / clarinet  
Jenny Khafagi / violin  
Blair Harris / cello  
Leigh Harrold / piano

**TAKUMA ITOH** / *Parallel Divergence* for flute, clarinet, violin, cello and piano  
**CORIGLIANO** / *She Moved Through the Fair* for soprano and flute  
**CHARLES IVES** / *Largo* for clarinet, violin and piano  
**DEBUSSY** / *Sonata* for cello and piano  
**BRENTON BROADSTOCK** / *'I touched your Glistening Tears'* for flute, clarinet and piano  
**RAVEL** / *3 Chansons Madecasses* for soprano, flute, cello and piano

In a stunning recital of modern masterpieces and contemporary chamber works, the dynamic, award-winning Syzygy Ensemble is joined by critically acclaimed soprano, Greta Bradman.

From the raw energy of Maurice Ravel's exotic song cycle, *Chansons Madecasses*, to the evocative lament of Australian composer, Brenton Broadstock, join Syzygy on a journey that will exhilarate and delight.

# MOUNT GAMBIER GENERATIONS IN JAZZ

DATE | Sunday 14th October  
TIME | 3.30pm  
VENUE | Drill Hall

TICKETS / \$15 CONCESSION / \$12

Graeme Lyall / Director

The celebrated Generations in Jazz Big Band offers us a brief history of the Jazz Big Band, moving through the eras of Duke Ellington, Benny Goodman, Count Basie, Stan Kenton, Woody Herman, right up to Gordon Goodwin in 2012.

The Big Band comprises seventeen auditioned students from Mount Gambier, Kingston SE, Sydney, Melbourne, Adelaide, and Bathurst, who have spent the year in Mount Gambier completing a Diploma of Music (Jazz). This year, the Big Band has performed at the Generations in Jazz Festival in Mount Gambier, and has opened the Stonnington Jazz Festival in Melbourne. Shortly after the Band's Port Fairy appearance, it embarks on its annual tour to Orange, the Wangaratta Jazz Festival, Melbourne and Sydney, where it records at James Morrison Studios.





## FREE FESTIVAL EVENTS



### SCHOOLS' EVENT OVERLANDER

DATE: Friday 12th October  
TIME: 11.30am and 1.30pm  
VENUE: REARDON THEATRE

**William Barton** / didgeridoo  
**Claire Edwardes** / percussion  
**Iain Grandage** / cello  
**Mel Robinson** / electric cello/voice

The four charismatic musicians of Overlander introduce you to the electric cello, marimba and didgeridoo. Expect fun rhythmic games; be surprised by the body's possibilities as percussion instrument. Make music in real time using the loop pedal, linked to the electric cello. Be prepared to make a new work, inspired by the world around you – the bush, the sea, the town, Port Fairy! – as the generous musicians of Overlander demonstrate the secrets behind their creativity.

**All parents, Festival visitors and friends, young and old are welcome to attend these performances for FREE.**



### COMMUNITY CONCERT

DATE: Sunday 14th October  
TIME: 2pm  
VENUE: LECTURE HALL

**Emily Rose** / harp

At age 11, Port Fairy harpist Emily Rose is already a first prizewinner of numerous competitions and eisteddfods, and has performed to much acclaim throughout Victoria and South Australia. Renowned for her musicality and dedication, Emily travels 1200 kilometres every three weeks for harp lessons in Adelaide.

Today she presents a free concert of Scottish, Irish and classical works on a Wurlitzer antique 47 strings Grand Concert Harp.



### STREET THEATRE

DATE: Saturday 13th and  
Sunday 14th October

**Ding Dong Yvonne Calling**

Ding Dong, Meet Yvonne! An Aussie beautician on a Mission! A combination of circus and comedy served up with a good dollop of cheese, this is one Australian story not to be missed. Yvonne (aka Kate Wright) launches a new range of cosmetics 'ManVon', make up...for him, full of hula hoop, juggling, bad Magic and ridiculous humour.

The show was originally made as a street theatre commission for the Adelaide Fringe Festival 2009 and has since gone on to perform on the U.K/ European festival circuits in 2009, 2010 and 2011. Highlights have included Watch this Space – London National Theatre U.K (2009, 2011), Stockton International Riverside Festival – U.K (2009) and The Malmo Festival – Sweden (2011).

*"She's gorgeous and funny - the real deal!"*  
- Jodi Wright, Director Christchurch World Busking Festival (2012)



### MASTERCLASSES

DATE: Friday 12th October  
VENUE: BRAUER COLLEGE,  
WARRNAMBOOL

Masterclasses presented by Benjamin Martin, piano, and Helen Noonan, voice. Details will be posted on our website.

### WHAT ELSE IS ON?

DATE: Saturday 13th and  
Sunday 14th October

**Made Craft Market**  
St John's Hall (Saturday)

**Craft Market**  
Railway Place (Saturday)

**St Patrick's School Fete**  
William Street (Sunday morning)

BOMBAX CIEBA



Ruth Walter - Botanical  
Drawings in Watercolour  
October 9 - November 20

#### SPRING EXHIBITIONS

Ruth Walter - Botanical Drawings in Watercolour  
John O'Loughlin Ceramics - The New Collection.

#### NEW WORKS AT WISHART GALLERY

Paintings by Peter Churcher, Eleanor Millard,  
John Wolseley, Peter Neilson, Rod Carmichael

Our print drawer includes available collectible  
works by: Lloyd Rees, Brian Dunlop, John Spooner,  
Antonio Muratore, Monique Auricchio, Jazmina  
Cininas, Heather Shimmen, Nic Goodwolf, Tony  
Ameniero, Graeme Peebles and Rosalind Atkins.

Wishart Gallery complex has a painter's working  
studio, a cafe and a beautiful garden. We serve  
great coffee, Devonshire tea, cakes, wines and  
Red Duck beer.

**SPECIALISTS IN FINE ART: PAINTINGS,  
ORIGINAL PRINTS AND CERAMICS.**

19 Sackville Street, Port Fairy. T. (03) 55682423  
E. rgardner7@bigpond.com.au

**WISHART  
GALLERY**



## FRIENDS OF THE FESTIVAL

Supporters of the Festival have the opportunity to enhance their involvement by becoming Friends of the Festival.

The Friends make an important contribution to the celebratory atmosphere of the Festival weekend and to the economic stability of the organisation. We encourage existing Friends to extend the network by introducing new Friends to the Festival.

#### Become a Friend of the Festival by contacting:

Port Fairy Spring Music Festival  
PO Box 53, Port Fairy VIC 3284  
PH (03) 5568 3030 or  
E [contact@portfairyspringfest.com.au](mailto:contact@portfairyspringfest.com.au)

**The annual subscription is \$35 per person or \$55 per couple and entitles you to:**

- Advance notice of program
- Advance and priority booking of tickets
- Vocal Lines newsletter
- Invitation to the launch of the Festival Program in Melbourne or in Port Fairy
- Invitation to the opening reception of the Festival in Port Fairy
- Discounts at a range of retail stores.



#### TAX DEDUCTIBLE DONATIONS

The Port Fairy Spring Music Festival Inc Public Fund is listed on the Register of Cultural Organisations under Subdivision 30-F of the Income Tax Assessment Act 1997. Donations over \$2 to the Festival's public fund are tax deductible.

These donations are greatly appreciated, carefully managed and promptly acknowledged and receipted. For further information about making tax deductible donations, please contact the Festival office on (03) 5568 3030 or by email: [contact@portfairyspringfest.com.au](mailto:contact@portfairyspringfest.com.au), or download application forms at [www.portfairyspringfest.com.au](http://www.portfairyspringfest.com.au)

# SHIGERU KAWAI PERFORMS AT PORT FAIRY *Spring Music Festival*



MAJOR SPONSOR



11<sup>th</sup> Australasian Piano  
Pedagogy Conference

MAJOR SPONSOR  
2012 PORT FAIRY  
SPRING MUSIC FESTIVAL



SHIGERU KAWAI

## The perfect piano for classical performance.

The Shigeru Kawai Concert Pianos on stage have our carbon fibre Millennium III action for faster responsiveness. The purest sounds, the finest touch – scintillating playing. Enjoy the festival. Enjoy Shigeru Kawai.

[www.shigerukawai.com.au](http://www.shigerukawai.com.au)

*Every successful festival  
relies on the generous  
support of its sponsors  
and donors, businesses  
and organisations.*

*We want to personally  
extend a thank you to the  
following businesses for  
their advertising support...*



62 Sackville Street  
Port fairy  
For all your holiday  
Accommodation Requirements  
Ph: (03) 5568 1066



[www.lockettrealestate.com.au](http://www.lockettrealestate.com.au)  
[enquiry@mcnallyproperties.com.au](mailto:enquiry@mcnallyproperties.com.au)

## TaitsLegal

Start off on  
a great note... 

Taits Legal can compose your:  
Business Agreements  
Family Agreements • Wills  
Family Farm Succession Planning  
Leases • Planning Applications

**Warrnambool Office**  
121 Kepler Street  
Phone 5560 2100

**Port Fairy Office**  
38 Bank Street  
Phone 5568 1402

**Terang Office**  
99 High Street  
Phone 5592 1666

**Mortlake Office**  
118 Dunlop Street  
Phone 5599 2504



- Good Times!
- Delicious Food
- Bar and Bistro Area
- Function Room
- Great People!
- Lunch and Dinner Menu
- Outdoor Dining Area

Damian and Sue Gleeson  
*Your Hosts*

76 Sackville Street, Port Fairy  
P 03 5568 1715  
F 03 5568 2831  
E [starpf@bigpond.net.au](mailto:starpf@bigpond.net.au)  
[www.thestarhotel.com.au](http://www.thestarhotel.com.au)







**BREAKFAST  
LUNCH  
DINNER**

Ideal central location,  
great meals or just for  
coffee and cake.  
Open 7 days from  
7.30am for breakfast,  
and lunch.  
Catering for  
functions available.

15 Bank Street, Port Fairy  
PH: 5568 2326

**AFFORDABLE  
ACCOMMODATION IN THE  
HEART OF PORT FAIRY**

56 Sackville Street  
Port Fairy 3284  
Ph. 5568 1800  
centralmotel@port-fairy.com  
portfairyhotel.com.au

**Central Motel**  
PORT FAIRY

The blue stone building offers a 3.5 star rating. 19 units tucked away in a quiet cul de sac set in landscaped gardens off the main street of Port Fairy. Offering our guests a quiet retreat to recharge and relax. Step out onto Sackville Street and be amongst the boutiques, restaurants, hotels, cafes and galleries that make up the very essence of Port Fairy. Central Motel offers guests a BBQ and outdoor setting to reflect on your days events and plan your next days adventures!

**Ramellas**  
CAFE, RESTAURANT

Open 7 days  
Breakfast, Lunch & Dinner  
Scrumptious Coffee & Cake

*Preparing mouth watering  
Mediterranean meals with  
a Turkish influence*

Wi Fi, internet  
& printing facilities

19 Bank St Port Fairy T: 03 5568 3322

breakfast | lunch | dinner

**rebecca's**  
cafe & ice cream

70 - 72 Sackville St.  
Port Fairy  
p: 03 5568 2533

Where the past is present..

National Trust Hotel, Heritage Cottages and  
stylish contemporary Motel Accommodation  
**COMFORT INN PORT FAIRY**  
&

**SEACOMBE HOUSE**

enquiry@seacombehouse.com.au  
www.seacombehouse.com.au  
22 Sackville Street, Port Fairy Tel 5568 1082

invest in knowledge  
and experience

**Sinclair & Wilson Investment Services**  
are proud to be associated with the  
Port Fairy Spring Music Festival.

Sinclair Wilson offer specialised knowledge in the areas of:

- Investments • Superannuation
- Centrelink • Retirement planning
- Self-managed superannuation
- Direct equities • Taxation planning

**SINCLAIR & WILSON**  
Investment Services Pty. Ltd.

177 Korolit St., Warrnambool.  
Ph: 5564 0555 Fax: 5564 0599  
Email: info@sinclairwilson.com.au

**CRAWFORD RIVER**  
ESTABLISHED 1975

*From the overture to the coda, enjoy the  
symphony of flavours and harmonious  
nuances that the wines of  
CRAWFORD RIVER have to offer.*

John Thomson has been meticulously crafting  
his distinctive wines for three decades.  
Tightly structured, intensely complex and  
seamlessly balanced, these locally grown and  
vinified wines, are, indeed, music to one's ears.

*Widely available in Port Fairy,  
or phone the Cellar Door on: 5578 2267.*

[www.crawfordriverwines.com](http://www.crawfordriverwines.com)

**DARRIWILL Farm**

Gourmet Food, Gifts  
& Wine Merchants

DARRIWILL FARM WARRNAMBOOL  
101a Liebig Street,  
Warrnambool 3280  
Ph: (03) 5561 4457

DARRIWILL FARM PORT FAIRY  
25 Sackville Street,  
Port Fairy 3284  
Ph: (03) 5568 3201



Spring Music Festival Venue  
**THE VICTORIA HOTEL**  
 all day dining  
 • restaurant & bar menu  
 • sportsbar & TAB  
 brewery bar  
 beer garden & drill hall



**Bookings Ph. 55682891**  
 42 Bank Street Port Fairy  
[www.vichotelportfairy.com.au](http://www.vichotelportfairy.com.au)

**Easy clothing with style**  
 From weekday to weekend,  
 Isabella's has you covered  
 Sizes 10 - 24  
 Labels including  
**Meredith, Yarra Trail**  
 plus  
**Gazman Menswear**  
**Open seven days**



31 Sackville Street Port Fairy Vic 3284  
**Isabella's**  
 BOUTIQUE & GIFTS  
 Tel (03) 5568 3277 Prop **Fiona Kavanagh** Fax (03) 5568 3417

*Langley's*  
 ACCOMMODATION BOOKING SERVICE



**T (03) 5568 2899**  
 E [info@holidayportfairy.com.au](mailto:info@holidayportfairy.com.au)  
[www.holidayportfairy.com.au](http://www.holidayportfairy.com.au)  
*...where everyday's a holiday*

**GREAT MENU**  
**BEST COFFEE**  
**ALL DAY BREAKFAST**



**OPEN DAILY, 8-4:30PM**  
 42 sackville street port fairy  
 (03) 5568 3452



**Spook's**

*Ruth Port Fairy*



*Fine Scarves*

**Opening hours:** Wed. to Sun. 11am to 5pm  
 or by request. Individually crafted from designer  
 fabrics - silks, wools, velvets and innovative  
 man made cloth. A scarf for every occasion -  
 from snug, go anywhere scarves to glamorous  
 evening wraps.

*"Devon Cottage"*  
 26 Campbell Street, Port Fairy 3284.  
 Telephone: **(03) 5568 1948**



**McLEAN'S  
 PHARMACY**

**35-37 SACKVILLE STREET  
 PORT FAIRY**

**TELEPHONE: 5568 1083**  
**AFTER HOURS: 5568 7212**



**Guardian**

*If The Shoe Fits*

**SHOES  
 BAGS  
 ACCESSORIES  
 OPEN 7 DAYS**

**NEW SEASON STOCK  
 AUGUST SEPTEMBER OCTOBER**

**2/8 BANK STREET  
 PORT FAIRY  
 TELEPHONE: (03) 5568 1086**



**THE  
 STAG**

**THE STAG RESTAURANT**  
 22 Sackville Street  
 Port Fairy  
 Open for dinner from 6pm.  
 For all reservations  
 Please phone (03) 5568 3229

# ACKNOWLEDGEMENTS

WE ACKNOWLEDGE THE SUPPORT OF OUR GENEROUS SPONSORS



**ARTS  
VICTORIA**



**ISOBEL & DAVID JONES  
FAMILY FOUNDATION**



## THANK YOU FOR THE GENEROUS DONATIONS OF:

(As at the time of printing)

Mr & Mrs Ken Adamson  
Ms Marjorie Atkinson  
Mrs Prue Brown  
Mr & Mrs Steve Brookmann  
Mrs Janet Calvert-Jones  
Miss Jean Cameron  
Mr & Mrs Alistair Campbell  
Mr & Mrs Don Carroll  
Mr & Mrs John Collingwood  
Mr & Mrs John Collins  
Mr Colin Cook  
Mrs Beverley Douglas  
Mr & Mrs Richard Douglas  
Mr & Mrs Peter Doyle  
Mr & Mrs Gilbert Farrow  
Mr Bill Forrest  
Mr & Mrs Don Glue  
Mrs Lesley Griffin

Prof & Mrs William Griffiths  
Mrs Norma Hamilton  
Dr Geoff Handbury  
Ms Elizabeth Harvey  
Mr Bryan Hoy  
Dr & Mrs James Hurley  
Ms Trish Kelly  
Mr & Mrs Alun Kenwood  
Mrs Ulrike Klein  
Mr & Mrs John Lewisohn  
Mrs Janet Limb  
Ms Diane Luhrs  
Dr & Mrs Ian Marks  
Mrs Eve McGlashan  
Mr & Mrs Gordon McGregor  
Mrs Skye McGregor  
Mrs Patricia McKenzie  
Ms Jean Melzer

Mr Alun Morris  
Ms Judy Morton  
Mr & Mrs Allan Myers  
Dr & Mrs Keith Nunn  
Prof & Mrs David Penington AC  
Dr B W Phillips  
Mr & Mrs Andrew Ray  
Mr & Mrs Ian Renard  
Mr & Mrs Tony Roberts  
Mr & Mrs Tom Robertson  
Mr & Mrs M J Sewell  
Mr & Mrs John Simpson  
Dr & Mrs Richard Smallwood  
Mrs Gillian Trahair  
Dr & Mrs Peter Turner  
Mr & Mrs Andrew Vigus  
Ms Gwenda Wallace  
Mr & Mrs John Warburton

**SET DESIGN & CONSTRUCTION:** Paul Kathner: design. Scenic Studios: construction.

# FESTIVAL ADMINISTRATION

## FESTIVAL BOARD

**Chairman:** Paul Clarkson AO  
**Artistic Director:** Anna Goldsworthy  
**Treasurer:** John Clue  
**Production Manager:** Dawn Holland  
**Port Fairy Venue Manager:** Barry Levinson  
**Board Members:** Margaret Broers, Brendan Donahoo, Rosie Merrin, Joy Potter, Eda Ritchie AM, Ruth Walter, Jennifer Whitehead  
**Administrator:** Claudia Warne  
**Artistic Administrator:** Lydia Dobbin

## PATRONS

Lauris Elms AM, OBE  
Peter Sculthorpe AO, OBE

## FESTIVAL DETAILS

Port Fairy Spring Music Festival Inc  
A0021392G ABN 51 392 754 636  
PO Box 53 Port Fairy, Victoria, Australia 3284  
**Tel:** +61 3 5568 3030  
**Email:** [contact@portfairyspringfest.com.au](mailto:contact@portfairyspringfest.com.au)  
**www.portfairyspringfest.com.au**

## MAILING LIST

If you would like to be placed on the mailing list for information, please call the Festival office on (03) 5568 3030, write to the Port Fairy Spring Music Festival, PO Box 53, Port Fairy, Victoria 3284 or send an email to [contact@portfairyspringfest.com.au](mailto:contact@portfairyspringfest.com.au)

## PROGRAM DESIGN

[adz@work](mailto:adz@work): (03) 5562 0155

## PLEASE NOTE

All details are correct at the time of printing. Performers, works and venues are subject to change without notice. All ticket sales are final.



## BOOKING & TICKETS

Peter Strickland  
Ticketing Coordinator  
PO Box 6089  
Caulfield South, Victoria 3162  
**Tel:** (03) 9571 7391

## ACCOMMODATION ENQUIRIES

Andrea Lowenthal  
Port Fairy & Region  
Visitor Information Centre  
Bank Street  
Port Fairy, Victoria 3284  
**Tel:** (03) 5568 2682  
**Fax:** (03) 5568 2833  
**Email:** [vic@moyne.vic.gov.au](mailto:vic@moyne.vic.gov.au)  
**www.moyne.vic.gov.au**



# HOW TO BOOK CONCERT TICKETS

1. Concert tickets can be pre-booked by internet, mail or telephone. Bookings for members of Friends will begin on 2 August 2012 and be open to the general public from 9 August 2012. Tickets will be mailed to you provided your order is received before Friday 5 October; otherwise tickets can be collected at the Box Office during the Festival. No orders will be accepted after 5pm Wednesday 10 October 2012. Bookings are processed in the order they are received. Please allow 3-5 weeks for ticket delivery.
2. You should note that some concerts book out early especially in smaller venues. If the concert you have requested is sold out ahead of your booking order, your name will be placed on a waiting list, although the Festival normally receives very few returns.
3. For online bookings, visit the Festival website at www.portfairyspringfest.com.au and follow the prompts. Make sure that you enter your personal details under registration as well as your ticket requirements.
4. For mail bookings, detach the booking form on the following page and complete both sides. Write in the details of the tickets you want on one side and your personal details and payment method on the other. Please don't forget to add one \$6 booking fee to your total order when working out the amount payable.
5. Post the completed form with your cheque or credit card details to:  
**Peter Strickland, PFSMF Ticketing, PO Box 6089  
Caulfield South Victoria 3162**
6. Alternatively, your booking can be made by telephone on (03) 9571 7391. Please have details of the concerts you want to attend and your credit card and concession details ready.

## REFUND POLICY

If you are unable to attend the Festival your unwanted tickets must be returned to the ticket office at the address above by 11.00am on Wednesday 10 October 2012. A refund cheque for the total amount paid for these returned tickets, less a \$5 processing fee, will be mailed to you. No refunds will be paid on tickets returned after that time. There will be no return of tickets or refunds during the Festival. Tickets to cancelled performances will be refunded if no substitute concert is scheduled for the same time as the cancelled performance.

## HANDLING CHARGES

Mail, telephone and online bookings will attract a handling charge of \$6 per total order. This charge assists in meeting the administration costs of the Festival and is in line with normal booking practice.

## DISCLAIMER

All details are correct at the time of printing. The Festival reserves the right to cancel and/or change details of performers, programs and venues without notice.

Tear Here

OFFICE USE ONLY DATE RECEIVED:

ORDER NO.:

## PERSONAL DETAILS:

Name

Address (for mailing of tickets)

Post Code

Preferred Telephone

Email Address

NUMBER OF PERSONS BOOKING CONCERTS ON THIS ORDER:

## CONCESSION DETAILS FOR EACH PERSON BOOKING CONCESSION TICKETS:

Name

Concession Number or Student ID

Type\*

\*Please indicate type of concession. (Concession ticket prices are only available to full-time students and means tested holders of Government pensions such as Aged, Disability, Carer, Newstart, TPI or Supporting Parents). **Please note that Concession prices are not available for Seniors Card Holders, Travel Concessions, Health Care Cards or Veterans Affairs gold or white treatment cards as these are not means tested pensions.**

## SPECIAL SEATING REQUIREMENTS (SUBJECT TO AVAILABILITY)

If you want to sit with others it would be helpful if orders are sent in at the same time

## PAYMENT METHOD

Cheque or money order made payable to Port Fairy Spring Music Festival.  
Please do not send cash.

Please charge my credit card as (please tick) ☐ Mastercard ☐ Visa

Card Number

    -     -     -    

Expiry Date

  /  

Card Holder's Name

Signature

NAME: \_\_\_\_\_

PORT FAIRY SPRING  
MUSIC FESTIVAL  
*Ticket Order Form*

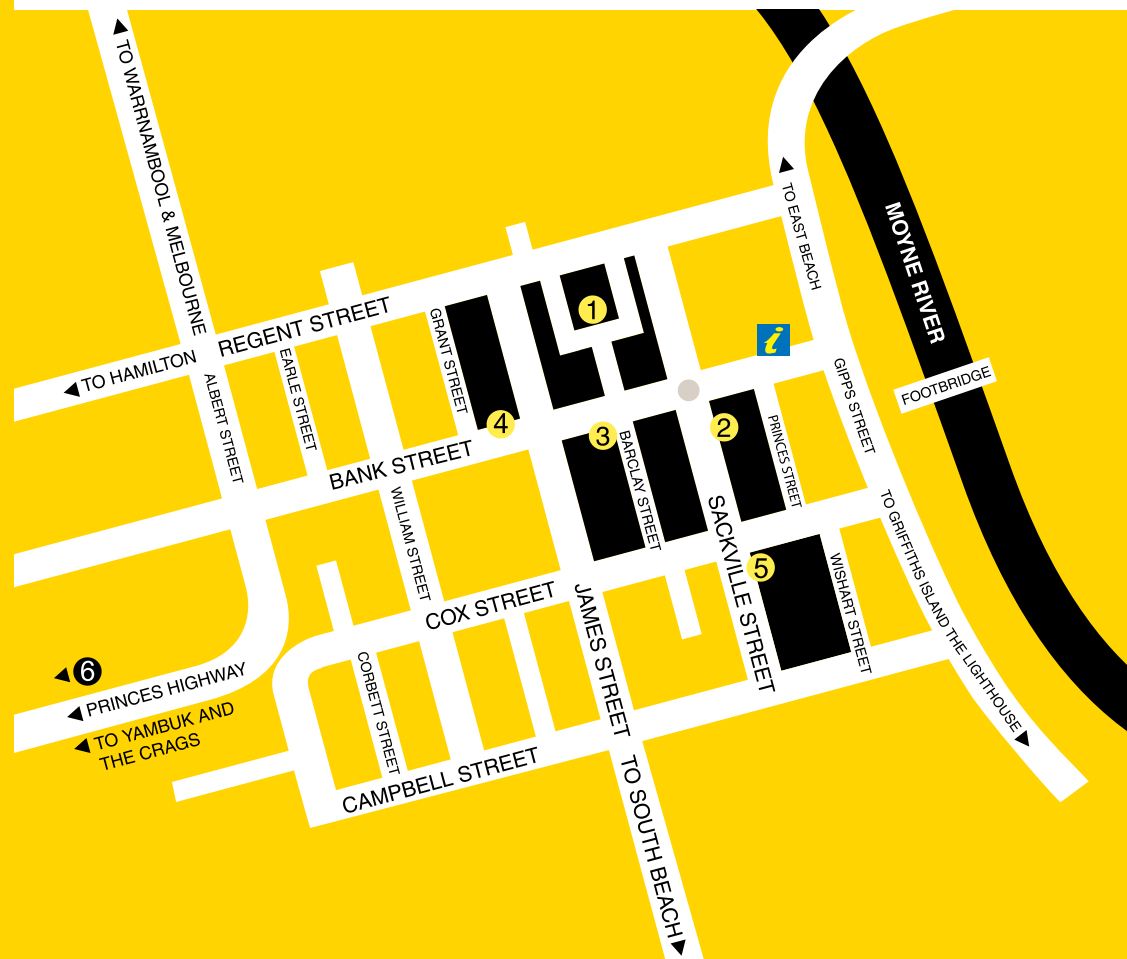
			No of Tickets Full Price		No of Tickets Concession		Amount
<b>FRIDAY 12TH OCTOBER</b>							
1	8pm	Birdsong at Dusk		x \$40		x \$32	= \$
2	8pm	Song of The Birds		x \$25		x \$19	= \$
3	10pm	Deborah Conway and Willy Zygiar		x \$25		x \$19	= \$
<b>SATURDAY 13TH OCTOBER</b>							
4	10am	Brahms Reawakening		x \$25		x \$19	= \$
5	11.30am	To the Earth		x \$25		x \$19	= \$
		Student		x \$5			= \$
6	11.30am	Already It is Dusk		x \$25		x \$19	= \$
7	12.45pm	Saturday Lunch		x \$30		x \$30	= \$
8	2pm	Overlander		x \$25		x \$19	= \$
9	2pm	Spring Song		x \$25		x \$19	= \$
10	3.30pm	Voicing Emily		x \$25		x \$19	= \$
11	3.30pm	Lullabies		x \$25		x \$19	= \$
12	5pm	Sing Your Own Complete Musical		x \$10		x \$10	= \$
13	8.15pm	Mozart and Mendelssohn		x \$40		x \$32	= \$
14	8.15pm	The Music and Poetry of Gardens		x \$25		x \$19	= \$
15	10.15pm	Festival Club		x \$25		x \$19	= \$
<b>SUNDAY 14TH OCTOBER</b>							
16	10am	Mentorship		x \$25		x \$19	= \$
		Student		x \$5			= \$
17	10am	Goldberg Variations		x \$25		x \$19	= \$
18	11.30am	Variations on Goldberg		x \$25		x \$19	= \$
19	11.30am	Sacred and Profane		x \$25		x \$19	= \$
20	12.45pm	Sunday Lunch		x \$30		x \$30	= \$
21	2pm	Rite of Spring		x \$25		x \$19	= \$
22	3.30pm	Syzygy meets Greta Bradman		x \$25		x \$19	= \$
		Student		x \$5			= \$
23	3.30pm	Mount Gambier Generations in Jazz		x \$15		x \$12	= \$
Sub Total:							= \$
Booking Fee:							+ \$6.00
Total:							= \$

**SPECIAL PRICES FOR FULL TIME STUDENTS:** There are three concerts offered to full-time students under the age of 25, as listed in the booking form above. Refunds will not be given for these tickets and a maximum of 20 tickets per concert are available at this price. A photocopy of a student's ID is required with this booking.

**MAKE SURE YOU HAVE COMPLETED BOTH SIDES OF THIS ORDER FORM**

## MAP INDEX

- |   |   |   |  |
|---|---|---|--|
| 1 | St. John's Church                         | 4 | Drill Hall                             |
| 2 | Lecture Hall                              | 5 | Wishart Gallery                        |
| 3 | Reardon Theatre & Festival Booking Office | 6 | Time & Tide                            |
|   |   |   | Visitor Information Centre & Bus Depot |



Doors open 15 minutes before each concert and latecomers will not be admitted into the auditorium until there is a suitable break in the performance.

Mobile phones and watch alarms should be turned off. Dress: casual.

Eating, drinking and smoking are not permitted inside the auditorium, and the use of cameras and recording equipment is strictly forbidden.



ACCOMMODATION • RESTAURANT



merrijigkitchen

Restaurant open for dinner only  
Bookings advisable on  
03 5568 2324

1 Campbell Street,  
Port Fairy, Victoria 3284 Australia  
T 03 5568 2324  
F 03 5568 2436  
E [info@merrijiginn.com](mailto:info@merrijiginn.com)  
[www.merrijiginn.com](http://www.merrijiginn.com)

# port fairy travel & accommodation centre

[www.portfairyaccom.com.au](http://www.portfairyaccom.com.au)

Managing some of Port Fairy's finest accommodation...  
luxury villas, East Beach view, central historical cottages,  
riverside apartments...  
we have a property to suit your needs and budget.



**TRAVELSCENE™**

Travel created for you



**PORT FAIRY TRAVEL**

[www.portfairytravel.com.au](http://www.portfairytravel.com.au)

*Need a Holiday?...*

We invite you to share our extensive knowledge on all your travel needs, whether domestic or international.

No job is too small for their undivided attention and expertise, they are more than a Travel Agent, they will plan your holiday as if it's their own.



hearn's

tel:

5568 3150

Shop 2,  
54 Sackville St,  
Port Fairy  
VIC 3284