

PORT FAIRY

SPRING

MUSIC FESTIVAL

11-13 OCTOBER 2019



PORTFAIRYSPRINGFEST.COM.AU

SHARE IN THE UNVEILING OF A WEEKEND OF FINE MUSIC

From traditional chamber music classics to exciting new works, the Port Fairy Spring Music Festival brings scintillating performances by established and emerging musicians to the world's most liveable town.

11–13 OCTOBER 2019

EVENT SPONSOR

KAWAI

WELCOME



**MONICA CURRO &
STEFAN CASSOMENOS**
Artistic Directors

We are honoured to be presenting our first Port Fairy Spring Music Festival in 2019.

EMERGENCE is the theme we explore this year – our origins, our songs and stories of beginnings, the places and ideas which inform our artform, the wonder of metamorphosis, and how things come into being.

We showcase a pantheon of emerging artists beginning with stunning Wiradjuri soprano/composer Shauntai Batzke's world premiere song cycle in First Nations language. Yiyun Gu casts incantations from Chopin's spellbook in *Magic Piano & The Chopin Shorts*, Bethany Simons enchants with *Reception: The Musical*, and we welcome the wizardry of the Orava Quartet.

We have the dynamic duo of Alexandra Flood and Alex Raineri, dazzling virtuosity from flautist Eliza Shephard, and the exhilarating Partridge Quartet takes us through the quartet cycle of celebrated composer Richard Mills, culminating with the world premiere of his fifth quartet.

A sunrise of glittering operatic heroes – Lee Abrahmsen, Dimity Shepherd, Greta Bradman, Louise Keast, Cheryl Pickering, Kate McFarlane, Liane Keegan, James Egglestone and David Parkin – take us on an expedition through song, from the emergent strains of Barbara Strozzi to the triumphant grandeur of Mahler's *Das Lied von der Erde*. Intrepid vocal explorers Consort of Melbourne weave a web of discovery around Gesualdo's startlingly adventurous madrigals, and the masterful Paul Kildea entrances us with his own web of words about music. Renowned recitalists Caroline Almonte and Michael Dahlenburg delight us on Saturday afternoon, and jazz giants Trichotomy and Michelle Nicolle mesmerise us with their slick tunes. The multiskilled Zephyr Quartet perform a concert entirely of their own compositions, as well as illuminating us with their spectacular light show *Between Light*.

The jewel in the crown of the festival is our Saturday Gala which gathers together local talent and expertise from instrumentalists and choristers from the South West region and beyond, alongside esteemed soloists and legendary maestro Richard Mills, in a celebration of emergence.

CHAIR'S WELCOME



PENNY HUTCHINSON
Festival Chair

Welcome to the Port Fairy Spring Music Festival for 2019!

On behalf of the board and all those who are part of the festival family, we are pleased to introduce Monica and Stefan's first festival program.

Growing up in Huddersfield, Yorkshire, I was really lucky to live in a town with a long and immersive musical history, from the famous Choral Society, to brass bands like Black Dyke Mills. There were seven youth orchestras, five in symphony format, a brass band and youth wind orchestra. There was a youth choir. We had free instrumental lessons and in return we were required to join one of the orchestras if invited. I started my illustrious career in the 3rd clarinet section of the wind orchestra!

Participation of many local and visiting musicians is a centrepiece of the Port Fairy Spring Music Festival in 2019 – the 30th festival. Monica and Stefan are building on Iain Grandage's legacy having curated a classic Port Fairy program with a few twists – including the orchestral extravaganza on Saturday evening with a record number of local instrumentalists and singers taking part.

As always, this festival could not take place without the contribution of government, Friends, corporate and individual supporters. There are many, and we thank those who have been on the journey with us, and those who join us for the first time this year.

MINISTER'S MESSAGE



MARTIN FOLEY MP
Minister for
Creative Industries

Welcome to the 2019 Port Fairy Spring Music Festival, this year celebrating 30 years of exceptional music in one of Victoria's most charming towns.

This program is the first from new Artistic Directors, Monica Curro and Stefan Cassomenos – two celebrated artists who bring vision, generosity and a love of music and storytelling to the role.

Live music can reach across generations and distance to bring us together – and so it is with the gala event *In the Beginning*.

Acclaimed conductor Richard Mills will lead community orchestras, top musicians like Vox Plexus and Consort of Melbourne, along with a choir of local singers and members of the Dhungala Children's Choir.

For three decades, music lovers and artists have made the winding coastal pilgrimage to be part of this festival with the local community. It's an event that demonstrates how the arts can shape our towns, cities and regions – and why Victoria is the creative state.

Congratulations on 30 years and enjoy this year's journey!

PORT FAIRY
SPRING
MUSIC
FESTIVAL



EMERGENCE BY MONICA CURRO AND STEFAN CASSOMENOS

"In the Beginning"...

Creation myths tell us how things began. All cultures have primary creation myths, the first stage in the psychic life of the species. As cultures, we identify ourselves through our collective dreams or "cosmogonies", and these creation stories help to explain metaphorically who we are in the world.

Our festival's theme EMERGENCE explores these metaphors, from grand philosophical concepts right down to a single seed giving rise to an enormous forest, or indeed 12 humble notes becoming an epic symphony.

Live music is a magnificent lens through which to view these life-giving elements and processes of emergence, from darkness to light, from infancy to adulthood, from the fog of ignorance and prejudice to the clear skies of understanding and acceptance.

Our programs reflect these journeys, where things are now and from whence they came – Gesualdo to Ligeti; a modest piano giving life to 24 universally loved Preludes; ancient Indigenous stories transformed into songs for now; how one enlightened philanthropist can cause the creation of an important body of work; the continuing metamorphosis of the mighty genre of jazz.

This year we present many emerging artists, we give them a platform on which to shine and an audience who will understand and appreciate their prodigious abilities. The seeds need nutrients and sunlight to thrive!

Finally, in a gesture of gratitude to the town and region that has so generously hosted our festival for 30 years, we have excavated a little deeper into the South West of Victoria to uncover what has been here all along. Our Saturday Night Gala will unveil an awe-inspiring legion of some of the most talented and passionate choristers and instrumentalists that could be found anywhere for a huge celebration of the shared joy of being humans joined by music, no matter where we came from, or how we got here.

FESTIVAL PROGRAM

FRIDAY

PERFORMANCE	TIME	VENUE	PAGE
SCHOOLS CONCERT:	11.30am	Reardon	16
MAGIC PIANO & THE CHOPIN SHORTS	& 1.30pm		
HOUSEHOLD NAMES: FRIDAY	4pm	Merrijig	22
KAWAI OPENING GALA: EMERGENCE	8pm	Reardon	8
ZEPHYR: BETWEEN LIGHT	8pm	Stadium	10
LATE NIGHT JAZZ: MICHELLE NICOLLE	10pm	Drill Hall	11

SATURDAY

TROCKNE BLUMEN	10am	Lect Hall	12
CHOPIN'S PIANO	10am	Reardon	13
MILLS QUARTET CYCLE PART 1	11.30am	St John's	14
MAGIC PIANO & THE CHOPIN SHORTS	11.30am	Reardon	15
JAZZ VOCAL MASTERCLASS	11.30am	Lect Hall	16
SATURDAY LUNCH: GRETA BRADMAN	12.45pm	Drill Hall	17
PIANO MASTERCLASS	12.45pm	Lect Hall	16
MILLS QUARTET CYCLE PART 2	2pm	St John's	18
ALMONTE PLAYS RAVEL	2pm	Reardon	19
DAHLENBURG PLAYS GRIEG	3.30pm	Reardon	20
ZEPHYR: IN THEIR OWN WORDS	3.30pm	Drill Hall	21
HOUSEHOLD NAMES: SATURDAY	3.30pm	Merrijig	22
ITALIAN SONG BOOK	5.15pm	Lect Hall	23
RECEPTION: THE MUSICAL	5.15pm	Reardon	25
SATURDAY GALA: IN THE BEGINNING	8pm	Stadium	26
ORAVA: ANCESTRY	8pm	Reardon	28
LATE NIGHT CHANSON: LEE ABRAHMSSEN	10pm	Drill Hall	29

SUNDAY

VENI CREATOR SPIRITUS	10am	St John's	30
HANSON-DYER IN WORDS	10am	Reardon	31
HOUSEHOLD NAMES: SUNDAY	11.30am	Merrijig	22
METAMORPHOSIS	11.30am	St John's	32
HANSON-DYER IN MUSIC	11.30am	Reardon	33
SUNDAY LUNCH: GRETA BRADMAN	12.45pm	Drill Hall	17
ORAVA: LA CREATION DU MONDE	2pm	Reardon	34
TRICHOTOMY TWENTY	2.15pm	Drill Hall	35
CLOSING GALA: SONG OF THE EARTH	3.45pm	Stadium	36

LEGEND

Reardon: Reardon Theatre St John's: St John's Church Lect Hall: Lecture Hall
Stadium: Southcombe Park Stadium Drill Hall: Drill Hall @ Victoria Hotel Merrijig: Merrijig Inn

DATE & TIME

Friday 11th October, 8pm

VENUE

Reardon Theatre

TICKETS

\$49/\$39 conc.

KAWAI OPENING GALA: EMERGENCE

FEATURING SHAUNTAI BATZKE,
FESTIVAL DIRECTORS, AND FRIENDS

Shauntai Batzke *Voice*
Stefan Cassomenos *Piano*
Monica Curro *Violin*
Jenny Khafagi *Violin*
Jason Bunn *Viola*
Michael Dahlenburg *Cello*
Emma Sullivan *Double Bass*

MESSIAEN *Regard du Père*
(from *Vingt Regards*)

BEETHOVEN *Adagio molto espressivo*
(from *Spring Sonata*, Op 24)

RAVEL *Piano Trio*

BATZKE *New Work*
(World Premiere)

The 2019 festival emerges – from the harmonious opening bells of the *Vingt Regards*, as Messiaen fixes our gaze on the dawn of creation – from the mellifluous *Adagio* movement of the Beethoven violin sonata now synonymous with springtime – and from Ravel's jubilant 1914 masterwork *Piano Trio*, which drew its inspiration from the unfinished composition *Zazpiak Bat*, Ravel's patriotic celebration of the ancient Basque culture of south-western Europe.

EMERGENCE concludes with a celebration of our own First Nations culture, in the world premiere of a newly commissioned work by Shauntai Batzke – one of Australia's leading sopranos, and a major emerging compositional voice in the Australian art music scene, migrating across genres. Her visionary project is an epic song cycle exploring her Wiradjuri heritage, with her own powerful lyrics written in First Nations language. For the world premiere, Shauntai collaborates with an ensemble of leading Melbourne string players, together with festival directors Monica Curro and Stefan Cassomenos.



PROUDLY SUPPORTED BY

KAWAI



"...An utter privilege to witness"

– KAYE BLUM (AUSTRALIANJAZZ.NET)
ON SHAUNTAI BATZKE

MAIN BELOW

Shauntai Batzke
Monica Curro,
Stefan Cassomenos,
Jason Bunn, Emma Sullivan
Jenny Khafagi,
Michael Dahlenburg

LEFT

ZEPHYR: BETWEEN LIGHT

AN ILLUMINATING AND IMMERSIVE
CONVERSATION BETWEEN LIGHT,
SOUND AND SPACE

DATE & TIME
Friday 11th October, 8pm

VENUE
Southcombe Park Stadium

TICKETS
\$49/\$39 conc.



ZEPHYR QUARTET

Belinda Gehlert *Violin*
Emily Tulloch *Violin*
Jason Thomas *Viola*
Hilary Kleinig *Cello*

Geoff Cobham *Lighting Designer*

GRAY *Lighter, Fluid*

MAGNUSSON *Dirt – Hue/Value/Chroma(Bound)*

GOULD *Songs in a Gentle Breeze*

KELLER *L.D.D. (Light, Depth, Dark)*

KEEGAN *The Light Within*

Between Light draws together the work of major Australian jazz artists with award-winning string ensemble Zephyr Quartet, one of this country's leading exponents of collaborative arts practice, and highly acclaimed lighting designer Geoff Cobham. The result is a spectacular and immersive performance experience that visually as well as sonically explores notions of light and dark, taking the Italian art term *chiaroscuro* as a genesis. With original music by Tony Gould, Lyndon Gray, Matt Keegan, Andrea Keller and Stephen Magnusson, this unique event transcends both light and sound, taking us to another realm.

“...This musical experience
transports you to another
time, another dimension.”

– INDAILY

DATE & TIME
Friday 11th October, 10pm

VENUE
Drill Hall

TICKETS
\$38/\$35 conc.
Includes snacks and beverage

LATE NIGHT JAZZ: MICHELLE NICOLLE

VIRTUOSO IMPROVISER IN THE
TRUE JAZZ TRADITION



Michelle Nicolle *Voice*
Ronny Ferella *Drums*
Geoff Hughes *Guitar*
Tom Lee *Bass*

Celebrated as Australia's finest jazz singer, Michelle Nicolle's apparent ease at difficult and varied improvisation brings to mind the skills of singers like Betty Carter, Mel Torme or Ella Fitzgerald. But with her own unique and highly acclaimed sound, Michelle Nicolle is a jazz singer in the true jazz tradition – a creative and masterful improviser with a virtuoso technique to match any instrumentalist. Known for her ability to get right to the heart of a song, Michelle has continually developed and nurtured her art form with the help of her accomplished quartet.

“An Australian
jazz singer ready
to command a
world stage.”

– SYDNEY MORNING HERALD

TROCKNE BLUMEN

MASTERPIECES FOR
FLUTE AND PIANO

DATE & TIME

Saturday 12th October, 10am

VENUE

Lecture Hall

TICKETS

\$35/\$28 conc.



Eliza Shephard *Flute*
Peter de Jager *Piano*

KATS-CHERNIN *Eliza Aria*

SCHUBERT *Introduction and Variations, "Trockne Blumen" D 802*

JOLIVET *Chant de Linos*

HINDSON *Odysseus and the Sirens*

"...Subtlety and technical assurance on show."

– CLASSIC MELBOURNE,
ON ELIZA SHEPHARD



Rising superstar Eliza Shephard tells stories of legend in her program featuring some of the most exhilarating pieces in the flute repertoire. Joined by resident piano genius Peter de Jager, Shephard unfolds tales of transformed swans, enchanting sirens, mythological musicians, and the promise of spring in fading winter blooms in Schubert's enduring masterpiece *Trockne Blumen*.

DATE & TIME

Saturday 12th October, 10am

VENUE

Reardon Theatre

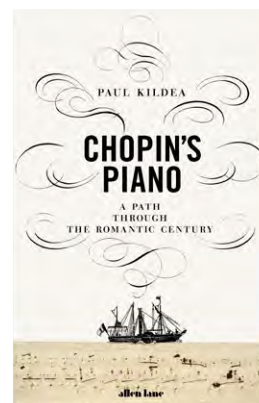
TICKETS

\$35/\$28 conc.

Paul Kildea *Speaker/Author*
Alex Raineri *Piano*

CHOPIN Selected Preludes Op 28

The story of an obsession – part biography, part musicology, part detective story – the fascinating book *Chopin's Piano* follows the turbulent life and mysterious disappearance of the modest piano upon which Chopin composed his 24 Preludes. In this shared recital, celebrated author, conductor and artistic director Paul Kildea tells the story of this remarkable instrument, punctuated by a performance by Alex Raineri of selections from the extraordinary cycle of Preludes.



CHOPIN'S PIANO

PART BIOGRAPHY
PART MUSICOLOGY
PART DETECTIVE STORY



"A wonderful book... Kildea writes with elegance and wit."

– THE TIMES (LONDON)

MILLS QUARTET CYCLE **PART 1**

**GLIMPSES FROM MY
BOOK OF DADA**

DATE & TIME

Saturday 12th October, 11.30am

VENUE

St John's Church

TICKETS

\$35/\$28 conc.

DATE & TIME

Saturday 12th October, 11.30am

VENUE

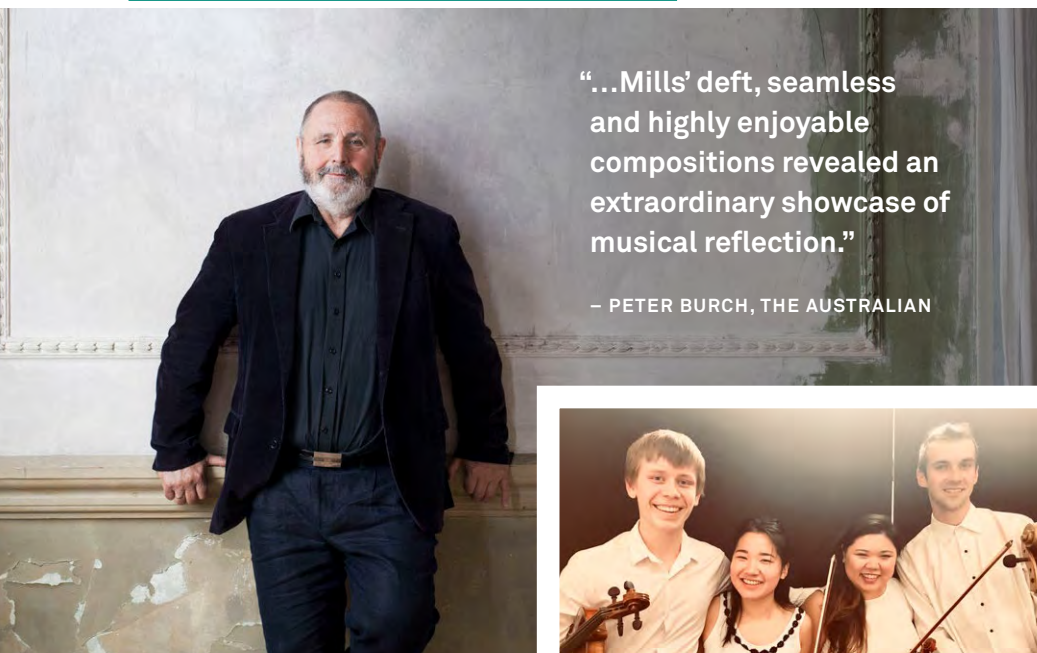
Reardon Theatre

TICKETS

\$35/\$28 conc.

MAGIC PIANO & THE CHOPIN SHORTS

**ANIMATED FILM WITH
PIANO WHIZ YIYUN GU**



"...Mills' deft, seamless
and highly enjoyable
compositions revealed an
extraordinary showcase of
musical reflection."

— PETER BURCH, THE AUSTRALIAN



PARTRIDGE QUARTET

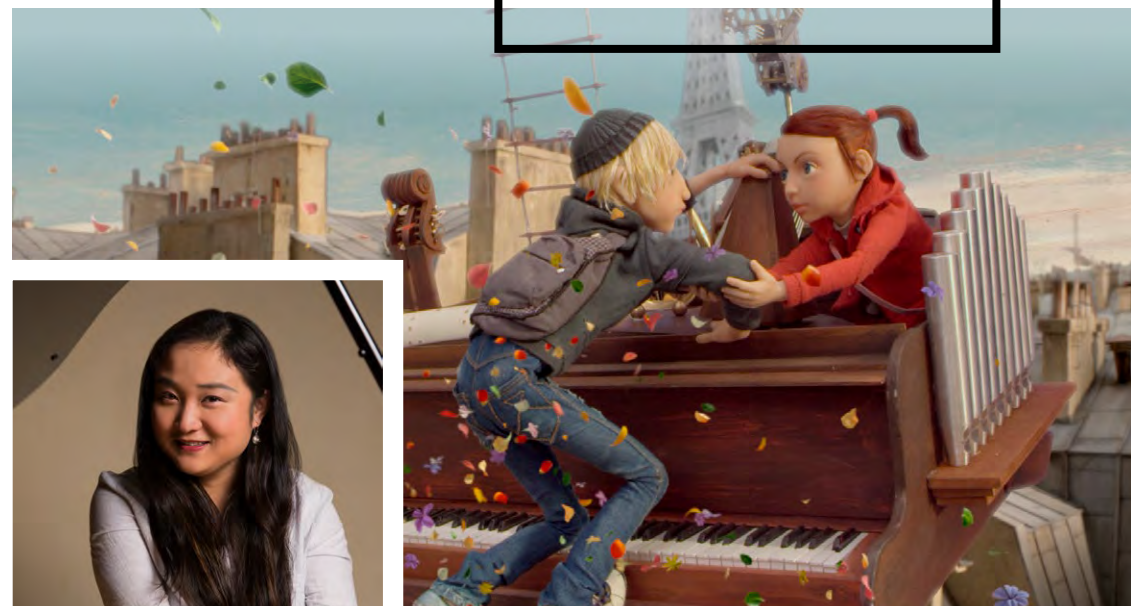
William Huxtable Violin
Mana Ohashi Violin
Eunise Cheng Viola
Daniel Smith Cello

MILLS *String Quartet No 2*

MILLS *String Quartet No 3*

MILLS *String Quartet No 4*,
'Glimpses from my Book
of Dada'

Richard Mills is deservedly one of Australia's most sought after musicians, and is now in the forefront of senior Australian composers. As part of the festival's celebration of his anniversary year, the award-winning Partridge Quartet presents the first instalment of his complete string quartet cycle. The second quartet was premiered by the Flinders Quartet and later played by the Takacs Quartet, and the third quartet was premiered by the Jerusalem Quartet. Flinders also premiered the Dadaesque fourth quartet, with its hilariously nonsensical movement titles such as *The Circumspect Ibis*, *Scheming & Latté Drinking*, *Dulcie Holland Says No*, and *The Rise of the Airheads in Public Life*.



Yiyun Gu *Piano*

CHOPIN *Selected Études Op 10*

CHOPIN *Selected Études Op 25*

PROUDLY SUPPORTED BY

Annette Maluish
Intermusica

This animated film concert with live solo piano created by Oscar® award-winning creators BreakThru Films brings the music of Chopin to glorious life with a kaleidoscope of unique animations. The main feature, *Magic Piano* tells the story of Anna and Chip-Chip's adventure of discovery aboard a magic, flying piano. This is presented alongside *The Chopin Shorts: Fantasy Collection*, a suite of 2-3 minute short films. Emerging virtuoso Yiyun Gu delights us with her live performance of the musical score, drawn entirely from Chopin's two magnum opuses of Études.

**"Truly wonderful... the emotional impact
was powerful... a great, entertaining,
enriching experience for all."**

— ERIC BECKMAN, LUMA FILMS

FREE EVENTS

PROUDLY
SUPPORTED BY
KAWAI

KAWAI POP-UP RECITAL HUB

DATE & TIME

Saturday 12th and
Sunday 13th October,
9.30am – 4pm

VENUE

The Hub

Call in between concerts, or stay for some hours, at this popular event! Enjoy coffee and a snack while Festival artists, masterclass students and audience members pop in all day to entertain and chat.

A schedule will be posted at The Hub on the Friday afternoon. Please feel free to Pop Up with a piece of your own to play on a superb Kawai grand piano – you will be rewarded with coffee on the house!

SCHOOLS CONCERT: MAGIC PIANO & THE CHOPIN SHORTS

DATE & TIME

Friday 11th October,
11.30am and 1.30pm

VENUE

Reardon Theatre

This animated film concert with live solo piano created by Oscar® award-winning creators BreakThru Films brings the music of Chopin to glorious life with a kaleidoscope of unique animations. The main feature, *Magic Piano* tells the story of Anna and Chip-Chip's adventure of discovery aboard a magic, flying piano. This is presented alongside *The Chopin Shorts: Fantasy Collection*, a suite of 2-3 minute short films. The score of Chopin Études is performed live by piano virtuoso Yiyun Gu.

KAWAI MASTERCLASSES

DATE & TIME

Saturday 12th October,
11.30am and 12.45pm

VENUE

Lecture Hall

Join us as jazz great Michelle Nicolle presents a jazz vocal masterclass at 11.30, and piano star Aura Go presents a piano masterclass at 12.45. Local secondary school-age students are invited to sign up for this opportunity to work closely with renowned artists in a relaxed and friendly setting. Festival visitors and friends welcome. Limited places, and booking essential. Please contact festival administration at contact@portfairyspringfest.com.au

DATE & TIME

Saturday 12th October, 12.45pm
Sunday 13th October, 12.45pm

VENUE

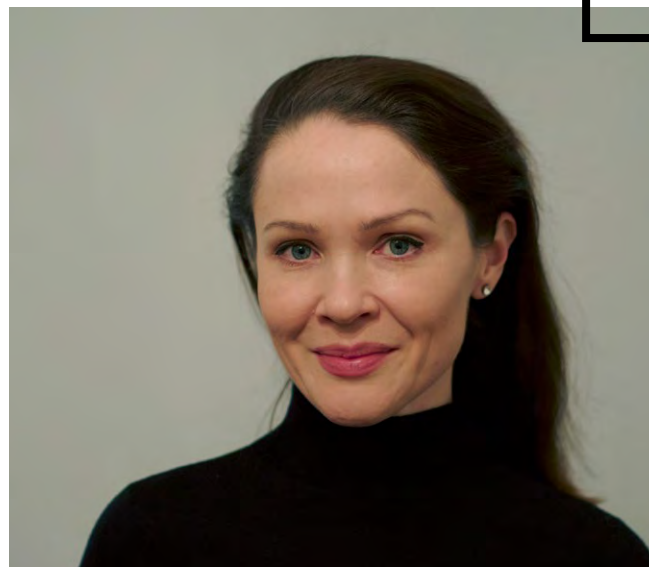
Drill Hall

TICKETS

\$38/\$35 conc.
Includes lunch and beverage

LUNCH WITH GRETA BRADMAN

IN CONVERSATION WITH
RICHARD MILLS



Greta Bradman *Soprano*
Richard Mills *Piano*

“Greta Bradman
shines... her finely
spun soprano blooms
and expands... a
luminescence to
her voice.”

– ANGUS MCPHERSON,
LIMELIGHT MAGAZINE

Greta Bradman is one of Australia's most acclaimed operatic and concert artists. In addition, she presents Weekend Mornings on ABC Classic, is a columnist for Limelight Magazine, and is also a registered psychologist active behind the scenes supporting arts careers and mental wellbeing across the sector. She is joined by eminent Australian musician Richard Mills, as the festival celebrates his own very versatile and extraordinary career as composer, conductor, and Artistic Director of Victorian Opera. Taking you “behind the curtain”, this promises to be a glorious feast of words and music.



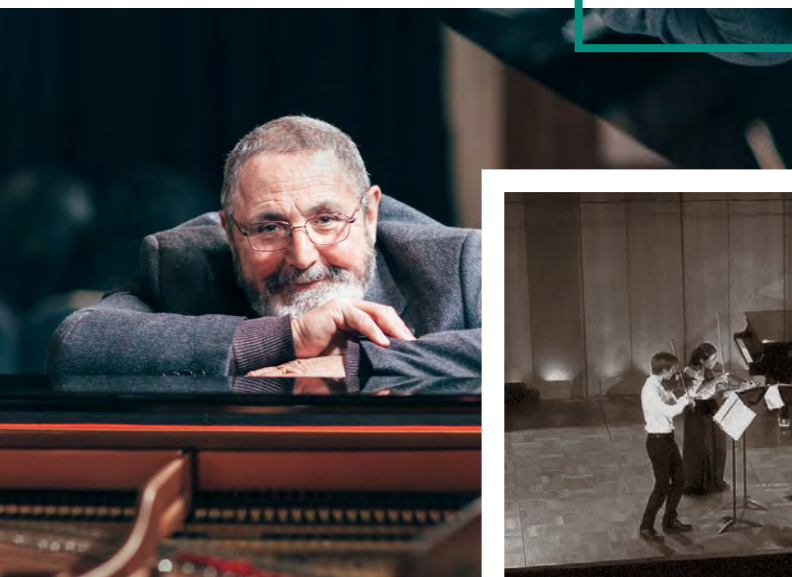
DATE & TIME
Saturday 12th October, 2pm

VENUE
St John's Church

TICKETS
\$35/\$28 conc.

MILLS QUARTET CYCLE PART 2

ACROSS THE DECADES



PARTRIDGE QUARTET

William Huxtable *Violin*
Mana Ohashi *Violin*
Eunise Cheng *Viola*
Daniel Smith *Cello*

MILLS *String Quartet No 1*

MILLS *String Quartet No 5*
(World Premiere)



The exuberant Partridge Quartet presents the second instalment of the Richard Mills complete string quartet cycle, celebrating this most eminent of Australian composers in his anniversary year. His first string quartet was written in 1991 for its world premiere by the Australian String Quartet, and was later performed by the Goldner Quartet. The fifth string quartet is newly commissioned by the Port Fairy Spring Music Festival, and represents the culmination of a life's rich compositional practice.

"The energetic and impassioned Richard Mills... knows no bounds."

— MICHAEL SHMITH, THE AGE

ALMONTE PLAYS RAVEL

GLISTENING GRANDEUR

DATE & TIME
Saturday 12th October, 2pm

VENUE
Reardon Theatre

TICKETS
\$35/\$28 conc.

"This amazing artiste took instant control of the piano with the lightest of touch... a breathtakingly passionate performance."

— ARTSHUB

Caroline Almonte *Piano*

BACH *French Suite No 5*
in G major, BWV 816

SUTHERLAND/BACH
Herzliebster Jesu

SUTHERLAND/BACH
Jesu meine Freude

ABBOTT *Glisten*

RAVEL *Gaspard de la nuit*

Legendary concert pianist and chamber musician Caroline Almonte presents a sparkling program where Margaret Sutherland's Chorale Preludes emerge from a French Suite of Johann Sebastian Bach, alongside the effervescent music of brilliant Australian composer Katy Abbott, and then gliding into Maurice Ravel's shimmering watercolour *Gaspard de la nuit*.



DATE & TIME

Saturday 12th October, 3.30pm

VENUE

Reardon Theatre

TICKETS

\$35/\$28 conc.



Michael Dahlenburg *Cello*
Stefan Cassomenos *Piano*

SCHUMANN *Five Pieces in Folk Style Op 102*

GRIEG *Sonata for cello and piano in A minor, Op 36*

Chamber music titan Michael Dahlenburg joins forces with long-time collaborator Stefan Cassomenos, to tell us tales that hover between states of consciousness, of a drunken one-legged soldier, of a tearful dream, and of nasty monsters in Schumann's inspired exploration of rustic themes. Dahlenburg and Cassomenos then turn their attention to the epic Grieg Cello Sonata, which also draws joyously on the folk style, in a manner distinctly reminiscent of Grieg's own Piano Concerto written fifteen years earlier, illuminating the rich heritage of Norwegian melody with lush harmonies and the most supremely romantic of gestures.

“Most impressive... shaped with energy and clarity.”

– THE AUSTRALIAN, ON MICHAEL DAHLENBURG

DAHLENBURG PLAYS GRIEG

EPIC FOLKLORE

ZEPHYR: IN THEIR OWN WORDS

AUTOBIOGRAPHICAL
JOURNEY

DATE & TIME

Saturday 12th October, 3.30pm

VENUE

Drill Hall

TICKETS

\$35/\$28 conc.

**ZEPHYR QUARTET**

Belinda Gehlert *Violin*
Emily Tulloch *Violin*
Jason Thomas *Viola*
Hilary Kleinig *Cello*

Repertoire to include:

KLEINIG *Great White Bird*

GEHLERT *Esque*

KLEINIG *Sibuk*

KLEINIG *A rain from the shadows*

GEHLERT *Dirt*

KLEINIG *Cockatoos*

GEHLERT *Hedda*

THOMAS *Mulysa*

GEHLERT *Epilogue*

TULLOCH *Yellow on the grey*

**“The much in-demand
Zephyr Quartet are
outstanding.”**

– REALTIME

Hailed as one of Australia's most lateral thinking and inventive ensembles, Adelaide-based Zephyr Quartet are leading genre-defying explorers of dynamic cross-artform, music focused collaborations. *In Their Own Words* is an intimate presentation of original works written by the performers themselves, alongside the intriguing stories behind their compositions, in a celebration of the 20th anniversary of this uniquely multi-skilled quartet.

HOUSEHOLD NAMES

THE INTIMATE MERRIJIG EXPERIENCE



“Charmed and engaged... faultless; truly beautiful... a moving performance.”

— RUBINA CARLSON, INDAILY

Celebrating the life and work of two towering musicians, Barbara Strozzi and Clara Schumann, along with songs by leading South Australian composer Anne Cawrse, Various People Inc's *Household Names* is an affectionate, personal glimpse of the work-life balance of female artists in 200 year instalments, designed for intimate audiences in the cosy surrounds of the Merrijig Inn. The singers engage closely with the audience and share stories and anecdotes, as well as performing this beautiful music.

Reserve your table now for an exquisite Merrijig dining experience following the show – be sure to order a specially designed Venetian cocktail celebrating the quadricentenary of Barbara Strozzi, or perhaps you might prefer a glass of Crawford River Vintage Riesling celebrating the bicentenary of Clara Schumann. Cin-cin! Contact Merrijig Inn: 03 5568 2324

DATE & TIME

Friday 11th October, 4pm
Saturday 12th October, 3.30pm
Sunday 13th October, 11.30am

VENUE

Merrijig Inn

TICKETS

\$38/\$35 conc.
Includes a glass of wine on arrival



VARIOUS PEOPLE INC.

Kate Macfarlane *Soprano*
Cheryl Pickering *Mezzo-Soprano*
Sachiko Hidaka *Piano*

Music by Barbara Strozzi,
Clara Schumann and Anne Cawrse

ITALIAN SONGBOOK

FROM TUSCANY TO NAPLES

DATE & TIME

Saturday 12th October, 5.15pm

VENUE

Lecture Hall

TICKETS

\$35/\$28 conc.

Alexandra Flood *Soprano*
Alex Raineri *Piano*

WOLF Selected songs from
Italienisches Liederbuch

ZEMPLINSKY 6 *Waltzergesänge*
(on Tuscan folk lyrics)

PUCCINI *E l'uccellino; Avanti Urania!*

ALFANO *È giunto il nostro ultimo
autunno; La notte e l'anima; Non so;
Venne e mi sedette accanto; Non hai
udito i suoi passi; Ultimo Pensiero*

ROSSINI *La Pastorella delle Alpi*
(Tirolese); *La Danza* (Tarantella
Napoletana)



“Flood’s sweet, pure singing perfectly captures the impetuous courage of the role.”

— COURIER MAIL

Internationally acclaimed soprano Alexandra Flood and stunning pianist Alex Raineri unite their prodigious talents in a smorgasbord of songs by, and inspired by, Italians. Highlights include Alexander von Zemlinsky's elegant setting of Tuscan folk lyrics, and a rare opportunity to feast on sumptuous songs by Franco Alfano, the unsung hero who completed the opera *Turandot* following the death of Puccini. From the Italian Songbook of Hugo Wolf to the abidingly famous *La Danza* of Rossini, the shining sun of Italian song insists on warming the soul.



PROUD SPONSOR
KAWAI

grow

Give your child the gift of music, the joy of performance. Playing piano has been found to stimulate motor skills, cognitive ability and creativity. A brand new Kawai upright with solid spruce soundboard and Kawai 12 year warranty can be in your home from **\$5,995 RRP***

See your Kawai retailer or kawai.com.au

*Manufacturer's recommended retail price



KAI 18641 KAW/JAMB

DATE & TIME
Saturday 12th October, 5.15pm

VENUE
Reardon Theatre

TICKETS
\$35/\$28 conc.



Bethany Simons Voice
Peter de Jager Piano

SIMONS/DE JAGER
Reception: The Musical

**“Witty and winning
cabaret... brilliant...
hilarious... striking.”**

– THEATRE PRESS

RECEPTION: THE MUSICAL

**AN OFFICE MEMO YOU
WON'T WANT TO MISS**



A celebration of all things administration, *Reception: The Musical* tells the story of a receptionist who finds joy in the manic world of customer service, stationery orders and thinking on her swivel chair. Written and performed by award-winning writer/performer Bethany Simons and leading Melbourne composer/pianist Peter de Jager, this uplifting and hilarious production features a toe-tapping original score of songs including *My Name is Bethany* (Not Stephanie), *Do You Have Sticky Tape*, *I Can't Help But Help*, *They Ring My Bell* and many more. Inspired by true stories from behind the desk of an unidentified tertiary music academy in Melbourne, this is surely the must-see cabaret comedy hit of the weekend.

SATURDAY GALA: IN THE BEGINNING

A COLLABORATIVE CELEBRATION

Shauntai Batzke *Soprano*
Louise Keast *Soprano*
Alexandra Flood *Soprano*
Liane Keegan *Contralto*
James Egglestone *Tenor*
David Parkin *Bass*
Monica Curro *Concertmaster*
Stefan Cassomenos *Piano*
Richard Mills *Conductor*

**PORT FAIRY SPRING MUSIC
FESTIVAL ORCHESTRA**

**PORT FAIRY SPRING MUSIC
FESTIVAL CHORUS**

Featuring members of:

Consort of Melbourne
Vox Plexus
Dhungala Children's Choir
Warrnambool Organ Festival Chorus
Corpus Medicorum
Warrnambool Symphony Orchestra
Hamilton Symphony Orchestra
Geelong Symphony Orchestra
Ballarat Symphony Orchestra
Limestone Coast Symphony
Orchestra

ORFF *O Fortuna*
(from *Carmina Burana*)

CASSOMENOS *In the Beginning*
(World Premiere)

BEETHOVEN *Finale: Ode to Joy*
(from *Symphony No 9*)

Opening with Carl Orff's dramatic setting of the 13th Century poem *O Fortuna*, and closing with Beethoven's universally anthemic *Ode to Joy* finale from his *Symphony No 9*, this gala event brings together musicians from all over the South West region, alongside Melbourne musicians, magnificent soloists and esteemed conductor Richard Mills, on one enormous shared stage. Centrally featured is the world premiere of new work *In the Beginning*, a setting of text collaboratively created by children from all over Victoria, including students at schools in the Moyne Shire, Warrnambool, and the surrounding region, and members of the Dhungala Children's Choir, in conjunction with Stefan Cassomenos as the work's composer and musical facilitator. The theme of the text centres around the question of how everything came into being, and draws its answers from all of the world's continents, sung in many of the world's languages, in a celebration of both the diversity and commonality within the spectrum of cultural responses to universal questions.

DATE & TIME

Saturday 12th October, 8pm

VENUE

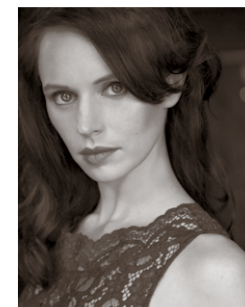
Southcombe Park Stadium

TICKETS

\$49/\$39 conc.

CLOCKWISE FROM TOP

Liane Keegan, James Egglestone, Alexandra Flood, Louise Keast, Richard Mills, Shauntai Batzke, David Parkin.



"Music is a higher
revelation than all
wisdom and philosophy."

— LUDWIG VAN BEETHOVEN

PROUDLY SUPPORTED BY

Michael Aquilina
Richard Mills appears courtesy of Victorian Opera



ORAVA: ANCESTRY

FROM MOZART TO
SHOSTAKOVICH AND BEYOND

DATE & TIME
Saturday 12th October, 8pm

VENUE
Reardon Theatre

TICKETS
\$49/\$39 conc.



ORAVA QUARTET

Daniel Kowalik Violin
David Dalseno Violin
Thomas Chawner Viola
Karol Kowalik Cello

Freshness abounds with this fiery, still-quite-young ensemble, who since last appearing at Port Fairy Spring Music Festival have performed all over the world, and most recently released their debut album for Universal Music. They return to us with a program engaging in a deep exploration of ancestry on multiple levels – examining the provenance of the string quartet medium, with Mozart's 'Hunt' quartet dedicated to the grandfather of the genre, Joseph Haydn; discovering the origins of the Russian school of string quartet writing with Rachmaninov's rarely heard *Romance*, leading into one of the 20th Century's greatest contributors to the repertoire, Shostakovich; and celebrating one of this country's most successful composers Elena Kats-Chernin with the bittersweet reflection on her own cultural origins in *Russian Rag*. To conclude, the Oravas pay tribute to the cultural derivation of their ensemble's name, with the driving rhythms and rustic melodies of Wojciech Kilar's *Orawa*.

KATS-CHERNIN *Russian Rag*

MOZART *String Quartet No 17*
'Hunt' K 458

RACHMANINOV *Romance (from*
String Quartet No 1, unfinished)

SHOSTAKOVICH *String Quartet*
No 6, Op 101

KILAR *Orawa (arr. Urbanski)*

"The ensemble sustained a remarkable level of intensity that had the audience hanging on every note."

– LIMELIGHT MAGAZINE

DATE & TIME
Saturday 12th October, 10pm

VENUE
Drill Hall

TICKETS
\$38/\$35 conc.
Includes snacks and beverage

LATE NIGHT CHANSON: LEE ABRAHMSSEN

EXQUISITE FRENCH ART SONG



"Abrahmsen is a revelation."

– THE AGE

"Stunning... fearless performance by the pianist Aura Go."

– NEW YORK TIMES

Lee Abrahmsen *Soprano*
Aura Go *Piano*

RAVEL *Pièce en forme de*
Habanera

DEBUSSY *Trois chansons de Bilitis*

DEBUSSY *Ariettes Oubliées*

POULENC Selected works,
including *Banalités*, *Violon*,
'C'; *Les Gars qui vont a la fête*,
and *Le Chemins de l'amour*



Lustrous chanteuse Lee Abrahmsen joins with gossamer pianist Aura Go to send you dreaming into the night with an exquisite collection of French art songs, with perfumed harmonies and sweet melodies from early 20th Century masters of the genre. Bookended with irresistible treats from Ravel and Poulenc, this delectable late night recital centrally features two of Debussy's most celebrated cycles, exploring late night themes of languorous ecstasy, antique Sapphic affection, and intense love.

VENI CREATOR SPIRITUS

ALPHA TO OMEGA

DATE & TIME

Sunday 13th October, 10am

VENUE

St John's Church

TICKETS

\$35/\$28 conc.



CONSORT OF MELBOURNE

GABRIELLI *Jubilate Deo*

GESUALDO *Veni Creator Spiritus; Luci serene e chiare; Ardo per te, mio bene; Moro, lasso*

HILDEGARD (VON BINGEN) *Veni Creator Spiritus*

DE LASSUS *Mia benigna fortuna*

LIGETI *Nonsense Madrigal No 3 'Alphabet'*

MONTEVERDI *Quel augellin; Cantate Domino; Si, ch'io vorrei morire*

PIZZETTI *Il giardino di Afrodite; Piena sorgeva la luna*

For a soul-replenishing Sunday morning, the outstanding vocal ensemble Consort of Melbourne fills our hearts with a multitude of madrigals from the last millennium, with everything from the most spiritually sacred to the piquantly profane. Works by Monteverdi, Gabrielli and Gesualdo, beloved masters of the genre, are interwoven with rare jewels of De Lassus, Hildegard von Bingen, Pizzetti and Ligeti's alpha-to-omega masterpiece, to create an intricate tapestry of radiant and ecstatic song.

**"Fine vocal blend...
polished performances."**

— DAVID BARMBY, ARTSHUB

DATE & TIME

Sunday 13th October, 10am

VENUE

Reardon Theatre

TICKETS

\$35/\$28 conc.

HANSON-DYER IN WORDS

CAPTIVATING INSIGHTS FROM
PAUL KILDEA



Paul Kildea *Speaker/Author*

**"Erudite, digressive,
urbane and deeply
moving... Mr Kildea
gracefully traverses
the decades, his pages
rich with period detail...
outstanding."**

— WALL STREET JOURNAL

Through his acclaimed work on Britten and Chopin, musical polymath and celebrated author Paul Kildea has written extensively about the social and cultural history of 20th Century Britain and France. In this lecture, he turns his gaze to the great Australian presenter, publisher and pioneer Louise Hanson-Dyer, whose visionary philanthropic contribution helped promote many composers including Britten, Holst, Schoenberg, Milhaud and Stravinsky, as well as Australian female composers Peggy Glanville-Hicks and Margaret Sutherland, through Hanson-Dyer's own publishing company Éditions de l'Oiseau-Lyre. Upon her death, she bequeathed £241,380 to the University of Melbourne, the equivalent of \$7.8 million today, and her memory is honoured through the naming of the library of the Melbourne Conservatorium of Music, as well as its newly constructed concert hall. This insightful presentation shines a spotlight on the achievements of this ground-breaking philanthropist.

METAMORPHOSIS

MUSICAL MYSTICISM FROM
ACROSS THE AGES

DATE & TIME

Sunday 13th October, 11.30am

VENUE

St John's Church

TICKETS

\$35/\$28 conc.

HANSON-DYER IN MUSIC

DIMITY SHEPHERD AND
CAROLINE ALMONTE REVEAL
A MUSICAL TREASURE TROVE

DATE & TIME

Sunday 13th October, 11.30am

VENUE

Reardon Theatre

TICKETS

\$35/\$28 conc.

“Music gives
a soul to the
universe, wings
to the mind,
flight to the
imagination,
and life to
everything.”

— PLATO



PARTRIDGE QUARTET

William Huxtable Violin
Mana Ohashi Violin
Eunise Cheng Viola
Daniel Smith Cello

GESUALDO *Veni Creator Spiritus*

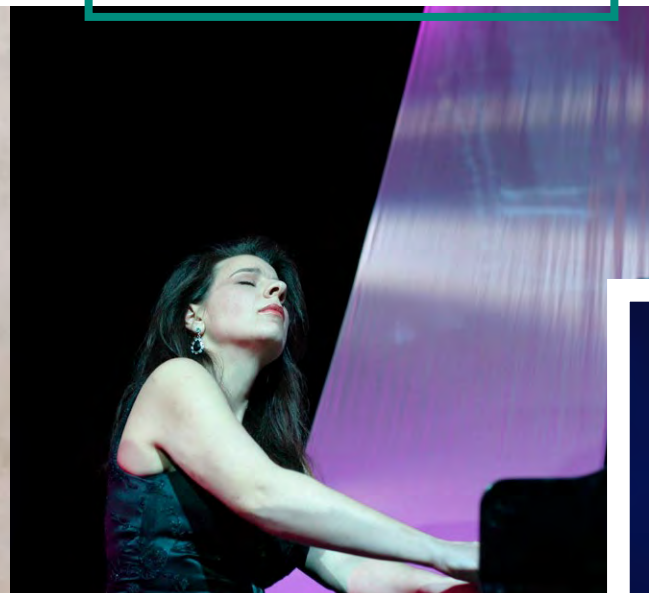
GESUALDO *Moro, lasso*

BEETHOVEN *Heiliger Dankgesang*
(from *String Quartet Op 132*)

PÄRT *Summa*

LIGETI *String Quartet No 1*
‘Métamorphoses nocturnes’

The young and vibrant Partridge Quartet unveil their extraordinary versatility with a program assembled from alpha-wave-state-inducing morsels of musical mysticism from across the canon. This is a grand voyage of metamorphosis, from the intoxicating harmonies of Gesualdo, through the holiest meditation of thanks from Beethoven's visionary quartet Op 132, to Arvo Pärt's pronouncement of "I believe" in the instrumental arrangement of his famous *Credo*, and culminating in the mind-blowing tour-de-force *String Quartet No 1* by György Ligeti.



In a musical tribute to the great 20th Century patron of the arts and music publisher Louise Hanson-Dyer, mesmerising mezzo-soprano Dimity Shepherd partners with superb pianist Caroline Almonte to present a breathtakingly diverse collection of works commissioned, unearthed, published and championed by this phenomenal benefactor. Through her publishing house Éditions de l'Oiseau Lyre, Hanson-Dyer printed impeccable editions of Lully, Purcell, and the complete works of Couperin, which had previously only existed in manuscript form. Hanson-Dyer was also a great advocate of Britten, Holst, Canteloube, and female Australian composers Peggy Glanville-Hicks and Margaret Sutherland. This fascinating recital reveals the unparalleled legacy of this remarkable woman.

Dimity Shepherd *Mezzo-Soprano*
Caroline Almonte *Piano*

Repertoire includes works by
Peggy Glanville-Hicks, Margaret
Sutherland, George Marshall-Hall,
Gustav Holst and more.



“Transfixing... Shepherd
inhabited these songs with
total conviction, capturing
the vast breadth of their
emotional range.”

— THE AUSTRALIAN

DATE & TIME
Sunday 13th October, 2pm

VENUE
Reardon Theatre

TICKETS
\$35/\$28 conc.

LA CREATION DU MONDE

THE EMERGENCE OF A GENRE

ORAVA QUARTET

Daniel Kowalik *Violin*
David Dalseno *Violin*
Thomas Chawner *Viola*
Karol Kowalik *Cello*

Stefan Cassomenos *Piano*

MILHAUD *La Creation du
Monde, Op 81b*

SCHUMANN *Piano Quintet,
Op 44*



Orava Quartet join forces with festival director Stefan Cassomenos in a musical exploration of our origins, performing Schumann's glorious and enduringly famous *Piano Quintet* – the first ever work in this emergent genre – alongside Milhaud's *La Creation du Monde*, the piano quintet based on his jazz-infused ballet of the same name, which reimagines the creation of the world based on African folk mythology.

“Warmth of sound, sublime inner voicing and spontaneity.”

– SYDNEY MORNING HERALD, ON ORAVA QUARTET

TRICHOTOMY TWENTY

JAZZ WIZARDRY

TRICHOTOMY

Sean Foran *Piano*
John Parker *Drums*
Samuel Vincent *Double Bass*

Trichotomy are celebrating the milestone of 20 years since their formation, and are now hailed as one of Australia's most inventive contemporary music ensembles. So much more than a traditional jazz trio, this astonishingly clever supergroup expands the capacities of the classic piano/bass/drums combination by skilfully blending dense, exciting improvisations and delicate atmospherics. Conjuring up sounds of modern jazz, ambient music, avant-garde rock, free improvisation and contemporary classical music, they continue in their relentless creation of new charts that push contemporary jazz into breathtakingly uncharted territory.

“One of the most exciting trios in contemporary music.”

– ALL ABOUT JAZZ

DATE & TIME
Sunday 13th October, 2.15pm

VENUE
Drill Hall

TICKETS
\$35/\$28 conc.



CLOSING GALA: SONG OF THE EARTH

BATZKE AND MAHLER

DATE & TIME

Sunday 13th October, 3.45pm

VENUE

Southcombe Park Stadium

TICKETS

\$49/\$39 conc.

Shauntai Batzke *Soprano*
Liane Keegan *Contralto*
James Egglestone *Tenor*
Fabian Russell *Conductor*

PORT FAIRY SPRING MUSIC FESTIVAL CHAMBER ORCHESTRA

BATZKE *New Work*
(World Premiere)

MAHLER *Das Lied von der Erde*
(arr. Schoenberg/Riehn)

CLOCKWISE FROM LEFT

Liane Keegan, Shauntai Batzke,
Fabian Russell, James Egglestone.



**“Mahler’s greatest
symphony.”**

– LEONARD BERNSTEIN

The 2019 festival concludes with a gala concert led by illustrious maestro Fabian Russell, featuring acclaimed soloists Liane Keegan, James Egglestone, and Shauntai Batzke, and a chamber orchestra of 14 distinguished festival instrumentalists. Together, they breathe life into the works of two inspirational composers from opposite ends of the musical spectrum. Gustav Mahler’s epic *Das Lied von der Erde* – “Song of the Earth” – weaves together six songs based on ancient Chinese poems dealing with mythological themes, and expressing the transience of human existence. Mahler composed this song cycle of symphonic proportions following the most painful period in his life, and the songs address narratives of living, parting and salvation.

Opening the program, Shauntai Batzke’s newly commissioned work also deals with the quandaries of terrestrial existence, drawing on this country’s own First Nations stories of humanity.

In this way, the festival comes to a close with two songs of the earth – of the land, of country, and ultimately of belonging.

THANK YOU

WE ACKNOWLEDGE THE
GENEROUS SUPPORT OF
OUR SPONSORS & DONORS

CREATIVE VICTORIA



KAWAI



Friends
OF THE
Festival

SINCLAIR Wilson



inter.musica



VICTORIAN
OPERA



ABC
South West
Victoria



Annamila

merrijig inn

BLARNEY BOOKS

DIRECTORS' CIRCLE (\$10K+)

Michael Aquilina
William Forrest AM
Isobel and David Jones Family
Foundation

FESTIVAL BENEFACTOR (\$2K+)

Prue Brown
Gassauer – Fleissner Family
Suzanne Kirkham
Alison and David Lansley
Annette Maluish
Maya Rozner and Alex King
Randal and Asako Williams
Anonymous (1)

CONCERT PATRON (\$500+)

Helen Brack
Dianne and Lino Bresciani
Nicholas Callinan

Marcus Elsum
Anne and Graham Evans AO
John and Jenny Fast
Lesley Griffin
Jo and John Grigg
Penny Hutchinson
Di Jameson and Frank Mercurio
Peter Jopling AM QC
Maudie Palmer AO
Joy Potter
Eda Ritchie
Joy Selby Smith
Sharon Wallace
Alan and Ann Wilkinson
Voi Williams OAM

ENSEMBLE PATRON (\$100+)

Alison Brookman
Peter Burch
Alastair and Sue Campbell
Nancy Cole
Hugh and Cherry Collins
Mary-Jane Gething

Ross and Anna Hicks
Geoff and Lesley Hodgkinson
Susan Howells
Clare and Neil Kearney
Barbara and Peter Kolliner
Sharon and Ron Lazarovits
June Marks
Gordon and Lee McGregor
David and Barbara Mushin
Chris and Margery Renwick
Tom and Julie Robertson
Kaye Salisbury and Bart Wissink
Noeline Sandblom
Anne and Geoff Skinner
Carol and Richard Smallwood AO
Peter Strickland
Gillian Trahair
Mary Goodall Tuohy
Peter and Rosemary Turner

With thanks also to many others

List correct at time of printing
Refer to our website for regular
updates of this list

FESTIVAL ADMIN

+ CREDITS & IMPORTANT INFO

FESTIVAL BOARD

Penny Hutchinson
Chair

Monica Curro
Stefan Cassomenos
Artistic Directors

Christopher Thompson
Treasurer

Alison Lansley
Secretary

Dawn Holland
Production Manager

Barry Levinson
Venue Manager

Kate Donelan
Graham Evans AO
Gavin Franklin
Joanne Levey
William Moore
Peter Strickland

ADMINISTRATOR

Emma Moloney

SET DESIGN

Wen Shobbrook
mentored by
Paul Kathner OAM

PATRON

Lauris Elms AM, OBE

WITH SPECIAL THANKS TO

Phillip Antippa
Jo Canham
Angus Christie
Hannah Coffey
Louise Keast
Alistair McCosh
John MacInnes
Caroline Neeling
Fiona Pugh
Christine Roeger
Eda Ritchie
James Tait
Dermot Tutty
Jennifer Whitehead
Clare Wilkes

FESTIVAL DETAILS

Port Fairy Spring Music
Festival Inc
A0021392G
ABN 51 392 754 636
PO Box 53 Port Fairy,
Victoria, Australia 3284

Phone (03) 5568 3030

Email [contact@
portfairyspringfest.com.au](mailto:contact@portfairyspringfest.com.au)

Web portfairyspringfest.com.au

MAILING LIST

If you would like to be placed on
the mailing list for information,
please call the Festival office on
(03) 5568 3030, write to the Port
Fairy Spring Music Festival, PO
Box 53, Port Fairy, Victoria 3284
or send an email to [contact@
portfairyspringfest.com.au](mailto:contact@portfairyspringfest.com.au)

BROCHURE DESIGN

Cassette Agency
cassette.com.au
Tel: (03) 9938 6666

PLEASE NOTE

All details are correct at the time
of printing. Performers, works
and venues are subject to change
without notice.

BOOKING & TICKETS

Peter Strickland
Ticketing Coordinator
PO Box 6089
Caulfield South, Victoria 3162
Tel: (03) 9571 7391

ACCOMMODATION ENQUIRIES

Port Fairy & Region
Visitor Information Centre
Bank Street Port Fairy,
Victoria 3284
Tel: (03) 5568 2682
Fax: (03) 5568 2833
Email: vic@moynesshire.vic.gov.au
moynesshire.vic.gov.au

NEXT YEAR

The Port Fairy Spring Music Festival next
year will be held over the weekend of the
9-11th October 2020.

For updates about the Festival during
the year, please visit the website
portfairyspringfest.com.au



Where the past is present...

National Trust Hotel, Heritage Cottages and stylish contemporary Motel Accommodation

COMFORT INN PORT FAIRY
&
Seacombe House
CIRCA 1847

www.seacombehouse.com.au
22 Sackville Street, Port Fairy Tel 5568 1082



We have strength in numbers

The benefit of dealing with an accounting practice that has a broad range of expertise is undeniable.

At Sinclair Wilson, this fact is absolutely true.

Proud Sponsor of the Port Fairy Spring Music Festival

SINCLAIR *Wilson*

Accountants & Business Advisors

62 Sackville St Port Fairy | Tel: 5568 2823
257 Timor St Warrnambool | Tel: 5564 0555
www.sinclairwilson.com.au




CRAWFORD RIVER
ESTABLISHED
1975

From the overture to the coda, enjoy the symphony of flavours and harmonious nuances that the wines of CRAWFORD RIVER have to offer.

Second generation Belinda Thomson crafts the distinctive wines from the family's vineyard established in 1975.

Tightly structured, intensely complex and seamlessly balanced, these locally grown and vinified wines are, indeed, music to one's ears.

Widely available in Port Fairy, or phone the Cellar Door on: 5578 2267

www.crawfordriverwines.com

BLARNEY BOOKS & ART



37 James Street
Port Fairy

New & Secondhand Titles
Contemporary Art Space
Family-Friendly, Dog-Friendly
Home of the annual Biblio Art Prize

blarneybooks.com.au
insta: blarneybooksandart
5568 2174



BREAKFAST
LUNCH
DINNER

Open 7 days from 7.30am for breakfast and lunch.
Dinner Friday and Saturday nights.
Seafood specialist.
Catering for functions available

15 Bank Street, Port Fairy
PH: 5568 2326

Spring Music Festival Venue
THE VICTORIA HOTEL
all day dining
restaurant & bar menu
sportsbar & TAB
brewery bar
beer garden & drill hall



Bookings Ph. 55682891
42 Bank Street Port Fairy
www.vichotelportfairy.com.au

port fairy JAZZ festival

February 7th - 9th 2020



Celebrating
the roaring twenty 20's

Information & tickets
www.portfairyjazz.com.au

Email:- portfairyjazz@gmail.com



Proudly supporting
the Port Fairy Spring
Music Festival

HOW TO BOOK CONCERT TICKETS

PORTFAIRYSPRINGFEST.COM.AU

Choose as many concerts as you wish and submit your order either by mail, online or by phone.

Most concerts last about an hour (gala concerts about 1½ hours) and venues are relatively close so there is time to get from one to another at the next scheduled time.

TICKETS WILL BE ON GENERAL SALE FROM 14th AUGUST. There is a priority booking period, 31st July to 13th August, for Friends of the Festival with membership current at the time of the Festival. Any other orders received during that time are held aside and processed as if received on 14th August when tickets go on sale to the general public. You can include a Friends annual subscription payment with your order to access the priority booking benefit.

Some concerts book out early, especially in smaller venues. If a concert is sold out ahead of your order, your name is added to a waiting list. We will endeavour to contact you if enough tickets become available before the Festival, although we normally receive few returns.

You will receive your tickets by email unless you specifically ask for printed tickets. We will mail these to you if we receive your order before Thursday 3rd October or else hold them for collection at the Festival Box Office on James St (see map).

Concession prices are available to persons under 40 years of age and to holders of government pension cards such as Aged, Disability, Carer, Newstart, TPI and Supporting Parent. Seniors cards, Health Care cards or Veterans gold or white treatment cards do not qualify for concession tickets.

We do not take mail or phone orders after Wednesday 9th October. After that date you can only buy tickets online or in person at the Box Office which will be open from 1pm on Friday 11th October.

There are no booking fees or credit card charges to add to your order.

REFUNDS: If you cannot attend the Festival please return your unwanted tickets to PO Box 6089 Caulfield South 3162 before Wednesday 9th October 2019. A refund equal to the value of tickets returned will be paid to you after the Festival. NO REFUNDS WILL BE PAID FOR TICKETS RETURNED AFTER THAT DATE. Tickets to cancelled performances will be fully refunded if no substitute concert is scheduled for the same time as the cancelled performance.



BOOK ONLINE

For online bookings go to
portfairyspringfest.com.au
and follow the prompts.



BY MAIL

To book by mail, complete both sides of the attached form and post it with your cheque or credit card details to:

Peter Strickland
PFSMF Ticketing
PO Box 6089 Caulfield South,
Victoria 3162



BY PHONE

(03) 9571 7391

Please have details of the concerts you want to attend and your credit card and concession details ready.

2019 BOOKING FORM

Select your concerts and then complete the other side of this form

NAME

FRIDAY 11TH OCTOBER 2019

			No. of Tickets Full Price	No. of Tickets Concession	AMOUNT
1	4:00pm	Household Names (Friday)	× \$38	× \$35	=\$
2	8:00pm	Kawai Opening Gala: Emergence (1½ hours)	× \$49	× \$39	=\$
3	8:00pm	Zephyr: Between Light (1½ hours)	× \$49	× \$39	=\$
4	10:00pm	Late Night Jazz: Michelle Nicolle	× \$38	× \$35	=\$

SATURDAY 12TH OCTOBER 2019

5	10:00am	Trockne Blumen	× \$35	× \$28	=\$
6	10:00am	Chopin's Piano	× \$35	× \$28	=\$
7	11:30am	Mills Quartet Cycle Part 1	× \$35	× \$28	=\$
8	11:30am	Magic Piano & The Chopin Shorts	× \$35	× \$28	=\$
9	12:45pm	Saturday Lunch: Greta Bradman	× \$38	× \$35	=\$
10	2:00pm	Mills Quartet Cycle Part 2	× \$35	× \$28	=\$
11	2:00pm	Almonte Plays Ravel	× \$35	× \$28	=\$
12	3:30pm	Dahlenburg Plays Grieg	× \$35	× \$28	=\$
13	3:30pm	Zephyr: In Their Own Words	× \$35	× \$28	=\$
14	3:30pm	Household Names (Saturday)	× \$38	× \$35	=\$
15	5:15pm	Italian Song Book	× \$35	× \$28	=\$
16	5:15pm	Reception: The Musical	× \$35	× \$28	=\$
17	8:00pm	Saturday Gala: In the Beginning (1½ hours)	× \$49	× \$39	=\$
18	8:00pm	Orava: Ancestry (1½ hours)	× \$49	× \$39	=\$
19	10:00pm	Late Night Chanson: Lee Abrahmsen	× \$38	× \$35	=\$

SUNDAY 13TH OCTOBER 2019

20	10:00am	Veni Creator Spiritus	× \$35	× \$28	=\$
21	10:00am	Hanson-Dyer in Words	× \$35	× \$28	=\$
22	11:30am	Household Names (Sunday)	× \$38	× \$35	=\$
23	11:30am	Metamorphosis	× \$35	× \$28	=\$
24	11:30am	Hanson-Dyer in Music	× \$35	× \$28	=\$
25	12:45pm	Sunday Lunch: Greta Bradman	× \$38	× \$35	=\$
26	2:00pm	Orava: La Creation Du Monde	× \$35	× \$28	=\$
27	2:15pm	Trichotomy Twenty	× \$35	× \$28	=\$
28	3:45pm	Closing Gala: Song of the Earth (1½ hours)	× \$49	× \$39	=\$

TOTAL = \$

(Please copy this amount to the other side of this form.)

PORT FAIRY

Port Fairy is one of Victoria's premier tourist destinations, with wide offerings from a world-class golf course to excellent beach and heritage walks.

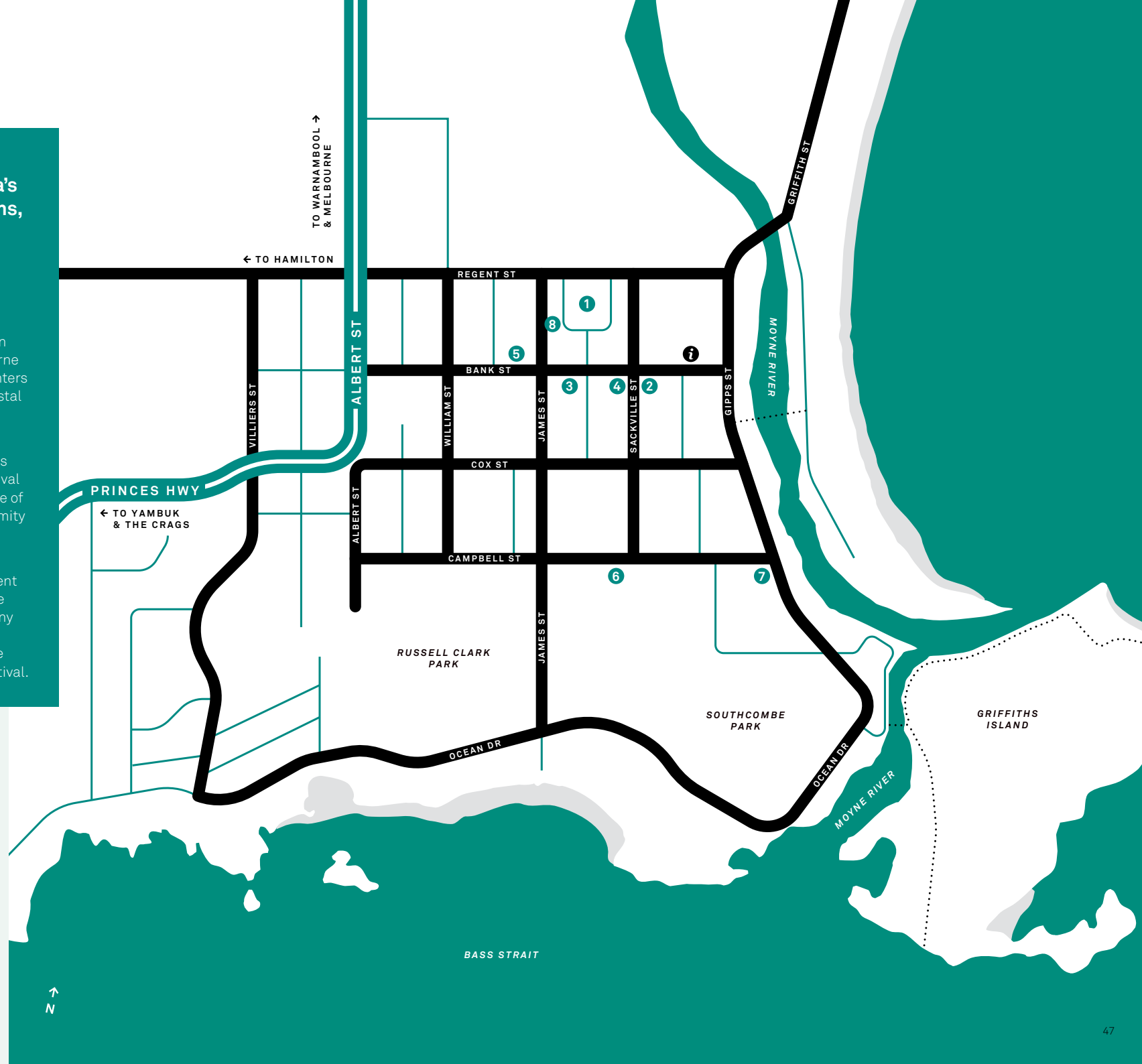
Situated at the end of the Great Ocean Road, 290 kilometres west of Melbourne at the point where the Moyne River enters the Southern Ocean, this historic coastal town is truly unique in character.

The Port Fairy Spring Music Festival has flourished in this location since its inception in 1990. Visitors to the Festival have enjoyed the celebrated ambience of the town, complemented by the proximity of its performance venues.

Port Fairy possesses a vast array of cafés and restaurants offering excellent cuisine which enhance the experience of the Spring Music Festival. With many accommodation options and ranges, there is somewhere for everyone to be comfortable whilst attending the Festival.

FESTIVAL VENUES MAP INDEX

1. St John's Church
2. Lecture Hall
3. Reardon Theatre
4. The Hub
5. Drill Hall
6. Southcombe Park Stadium
7. Merrijig Inn
8. Festival Box Office (Blarney Books)
- i** Visitor Information Centre & Bus Depot



Port Fairy Spring Music Festival is a celebration of fine music making within the idyllic surrounds of picturesque Port Fairy.

We invite you to enjoy our exciting collection of hour-long concerts across one vibrant weekend in October.

PORTFAIRYSPRINGFEST.COM.AU

