

PORT FAIRY
SPRING
MUSIC FESTIVAL
Live the music

14-16 OCTOBER 2022



PORTFAIRYSPRINGFEST.COM.AU



**RECHARGE YOUR
SOUL WITH A BLAZE
OF WHITE-HOT
ARTISTRY**

From celebrated works of the past to inspirational classics of the future, the Port Fairy Spring Music Festival presents world-class performances by local, visiting, emerging and established musicians – in the most magical place on Earth.

14 – 16 OCTOBER 2022

EVENT SPONSOR

KAWAI

CREATIVE VICTORIA



WELCOME



**MONICA CURRO &
STEFAN CASSOMENOS**
Artistic Directors

REGENERATION IS UNDOUBTEDLY THE DEFIANT THEME OF 2022 – THE IRREPRESSIBLE HEARTBEAT OF CULTURAL LIFE THAT WILL ALWAYS RISE AGAIN.

Springing back to life with *Miriwa*, Brenda Gifford's offering of renewed voice to the Dhurga language, alongside Mahler's magnificent Symphony No 4, the 2022 PFSMF celebrates eight world premieres – Anne Norman reimagines sounds of Port Fairy wetlands, Brenda Gifford invokes *Barra Barra*, the timeless sea, James Ledger showcases James Crabb's dazzling virtuosity, Bryony Marks rescues footage from our uncomfortable past, Thomas Green's multi-faceted prism shines across three new works, and Dermot Tutty nurtures voices of the future with his oratorio co-written with Port Fairy children.

We welcome the Goldners for their Port Fairy debut, and witness the return of adored festival favourites – Songmakers pay tribute to our Festival Patron, Lauris Elms, and also to tango maestro Piazzolla; Anna Goldsworthy makes a triumphant return with Brahms, Pejačević and Haydn; Various People in *Invocations* reconjure their intimate world; and festival icon Stephen McIntyre hosts a feast of Schumann and Schubert. We reveal a treasure trove of youthful brilliance – the wunderkind Wattleseeds, the prodigious Partridges, the bodacious Black Square Quartet, rising superstar vocalists Louis Hurley and Rebecca Rashleigh, and our very own local "Regenerators". The Stiletto Sisters and Cairo Club Orchestra raise the roof off the Drill Hall, and Port Fairy legends Anna-Lee Robertson and Leah Oswin share their gift of song. We unveil The Sensorium, an innovative multimedia installation, and with the ringing of the Federation Handbells we herald a new Festival venue – St Brigid's Crossley.

Our sweetest joy in returning in 2022 is to reunite with friends from the Southwest and beyond, in two special events – a new collaboration with the Find Your Voice Collective affirming humanity through creativity; and our epic Closing Gala, again assembling a splendour of talent and expertise from local instrumentalists and choristers alongside esteemed soloists and maestro Michael Dahlenburg, in an ode to our ceaseless human capacity for regeneration.

CHAIR'S WELCOME



PENNY HUTCHINSON
Festival Chair

It is with great pleasure that we present the 2022 Festival Program.

While our Festival program is the heart of what we do, we are committed to working with the local community throughout the year. This year our Artistic Directors Stefan Cassomenos and Monica Curro have presented a number of masterclasses and workshops for the talented students in the region.

We are excited to continue supporting and nurturing our community's passion for creativity into the future. We were thrilled to present our second Autumn Gala in Port Fairy featuring renowned singer Josh Piterman with local soloists.

The audience's response was outstanding and we look forward to creating similar inspiring experiences in the future.

As an organisation we have also been reflecting on the festival's thirty-plus-year legacy and discussing how we can evolve, deepening our relationship with the local community and contributing to the creative ecology of Victoria. The Victorian Government's new Creative State 2025 strategy places creativity at the heart of Victoria's recovery and prosperity and ensure that Victorians wherever they live will have improved and more equitable access to cultural experiences, creative expressions and career opportunities. The Festival will play an important part of ensuring this strategy is brought to life.

We are profoundly grateful to the Victorian Government through Creative Victoria for their support over many years and especially the past 18 months of unprecedented disruption. Their ongoing support at this time has been invaluable in ensuring that we can return this year with strength and the exciting program curated by Monica and Stefan.

We look forward to seeing all our loyal audience members, supporters and new friends and lovers of wonderful music experiences, in Port Fairy, in October.



MINISTER'S MESSAGE



STEVE DIMOPOULOS MP
Minister for
Creative Industries

The season of rebirth takes on a special significance in Port Fairy this year with the return of the beloved Port Fairy Spring Music Festival.

After two years of waiting, music lovers and artists will once again be able to join the local community in this wonderful celebration of music and art.

This gorgeous coastal enclave will host 36 events over 3 days, featuring more than 60 artists, offering the perfect cultural weekender.

The Port Fairy Spring Music Festival is one of the gems of our creative state – a world-class music offering, in a unique, picturesque setting.

We're proud to support this festival as it builds on its 30-plus-year legacy of delivering rich cultural opportunities – and a tourism boost – for Victoria's scenic south-west.

Congratulations to the Port Fairy Spring Music Festival team on a festival reborn. To everyone else: get out and enjoy this fantastic program!



KAWAI WELCOME



WARRICK BAKER
Kawai Australia

KAWAI

A welcome from our sponsors

KAWAI has enjoyed being a long term supporter and proud sponsor of the Port Fairy Spring Music Festival, I would like to extend a very warm welcome to those attending and performing this year.

The past two years has heightened the enrichment of the value of music and the important role music has in our lives. In the absence of the festival for the past years, this year we welcome back with gusto, to the stage, live performances for what is a stella program delivered by the Co-artistic directors; Monica Curro and Stefan Cassomenos.

Following in the footsteps of past Artistic Directors, Monica and Stefan have managed to cover both a contemporary and classical program to meet every musical taste by all who attend.

We are thrilled to see Port Fairy Spring Music Festival back on stage for 2022 and trust you will enjoy the 31-performances programmed over the exciting three day festival.

Warm regards,

Warrick Baker

General Manager
KAWAI Australia & New Zealand

KAWAI

95
YEARS
SINCE 1927



**THE ENDLESS QUEST
— FOR PERFECTION
SINCE 1927 —**

kawai.com.au

REGENERATION

BY MONICA CURRO AND
STEFAN CASSOMENOS

**After the winter, there is a breath of life – Spring,
More than just a glimmer of hope,
More than merely resuming where we left off,
Not simply picking up the pieces and starting again,
But Spring – the spontaneous regeneration of life's essence.
We return with ardour to the things which make us whole.**

We reacquaint ourselves with old friends – Gustav Mahler, Wolfgang Mozart, Robert Schumann, Franz Schubert, Johannes Brahms – and with younger colleagues, bursting to be able to perform for us again. We revere them with renewed wonder.

We rekindle the spark of vitality which our living composers, flagbearers of the culture of our times, can again give to their musical offspring, so that we can again be there in the room as a new work is brought to life, so that our ears may again listen to the fresh strains of a newly discovered harmony; a freshly minted melody; a uniquely envisioned perspective.

We reconnect with our cherished Southwest visual artists, whose magnificent artworks kept us bonded to Port Fairy during last year's digital Festival.

We reunite with our passionate Southwest choristers and instrumentalists, for a massed celebration of our shared love of music, in all the different ways it may have meaning for us, and in all the diverse forms in which it may find its most meaningful expression.

Above all, we return to this enchanted place that inexhaustibly yields treasured experiences.

We revel in our regathering; we rejoice in our Regeneration.

FESTIVAL PROGRAM

FRIDAY

PERFORMANCE	TIME	VENUE	PAGE
KAWAI OPENING GALA: REGATHERING	8pm	Reardon	10
SONGMAKERS: NOSTALGIA	8pm	Drill Hall	12
BABKAS, BAGELS & BLACK FOREST CAKE	10pm	Drill Hall	13

SATURDAY

BRUNCH WITH ST BRIGID	9:30am – 12pm	St Brigid's	14
– SPEAK PERCUSSION: BELL CURVE 1			
– MUNGALA, MADRIGALS & MOZART			
REJUVENATION	10am	St John's	15
BOUNDLESS BRAHMS	10am	Reardon	16
WALDSZENEN	11.30am	Reardon	17
INVOCATIONS	11.30am	St John's	18
SATURDAY LUNCH: CRITIQUES BRUTALES	12.45pm	Drill Hall	19
SONGMAKERS: LAURIS ELMS TRIBUTE	2pm	Reardon	20
FIND YOUR VOICE	2pm	Stadium	21
REGENERATORS	2pm	Lect Hall	23
SPEAK PERCUSSION: BELL CURVE 2	2:15pm	St Brigid's	24
PAPA & PEJAČEVIĆ	3.30pm	Reardon	25
BROLGA DAWN	3.30pm	Drill Hall	26
SPEAK PERCUSSION: BELL CURVE 3	3:45pm	St Brigid's	24
REFLECTIONS	5.15pm	Reardon	27
CABARET: AFTER BIRTH	5.15pm	Drill Hall	28
GUARDIAN SPIRIT	7:45pm	Stadium	29
SATURDAY GALA: GOLDNERS	7:45pm	Reardon	30
CAIRO CLUB ORCHESTRA	10:15pm	Drill Hall	32

SUNDAY

SPRING FESTIVAL WORSHIP	9am	St John's	22
THE SENSORIUM	10am-3pm	Lect Hall	33
DE PROFUNDIS	10am	St John's	34
MOTHERS' SUITE SWEET MOTHERS	10am	Drill Hall	35
LULLABY	11.30am	Drill Hall	36
AUSTRALIA FAIR?	11.30am	Reardon	37
SUNDAY LUNCH: CRITIQUES BRUTALES	12.45pm	Drill Hall	20
THE ANCIENT SEA	2pm	St John's	38
SCHUBERT SWANSONG	2pm	Reardon	39
CLOSING GALA: REGENERATION	3.30pm	Stadium	40

LEGEND

Reardon: Reardon Theatre **St John's:** St John's Church **Lect Hall:** Lecture Hall **Drill Hall:** Drill Hall at the Victoria Hotel **Stadium:** Southcombe Park Stadium **St Brigid's:** St Brigid's Church, Crossley

DATE & TIME

Friday 14th October, 8pm

VENUE

Reardon Theatre

TICKETS

\$50/\$40 conc.

Rebecca Rashleigh *Soprano*

Fabian Russell *Conductor*

**PORT FAIRY SPRING MUSIC
FESTIVAL CHAMBER
ORCHESTRA**

GIFFORD *Miriwa (Sky)*

MAHLER *Symphony No.4*
(arr. Klaus Simon)



**KAWAI
OPENING GALA:
REGATHERING**

MIRIWA AND MAHLER'S FOURTH

In a celebration of re-emergence from the isolation of the past two years, we look to the sky and heavens with gratitude that we can again gather together here in our beloved Port Fairy in 2022.

Yuin composer Brenda Gifford's *Miriwa* paints a joyous picture of the sky and its relationship to Country, and the intimate chamber music version of Gustav Mahler's lustrous Fourth Symphony gives us a glimpse of the Heavenly life through the eyes of a child.

REGATHERING features esteemed conductor Fabian Russell, rising superstar soprano Rebecca Rashleigh, and an ensemble of impeccable instrumentalists, as we come together to reconnect, recharge and regenerate at the 2022 Opening Gala.



“...Rashleigh is exceptional
in conveying its emotion ...
sparkling soprano”

– LIMELIGHT



DATE & TIME

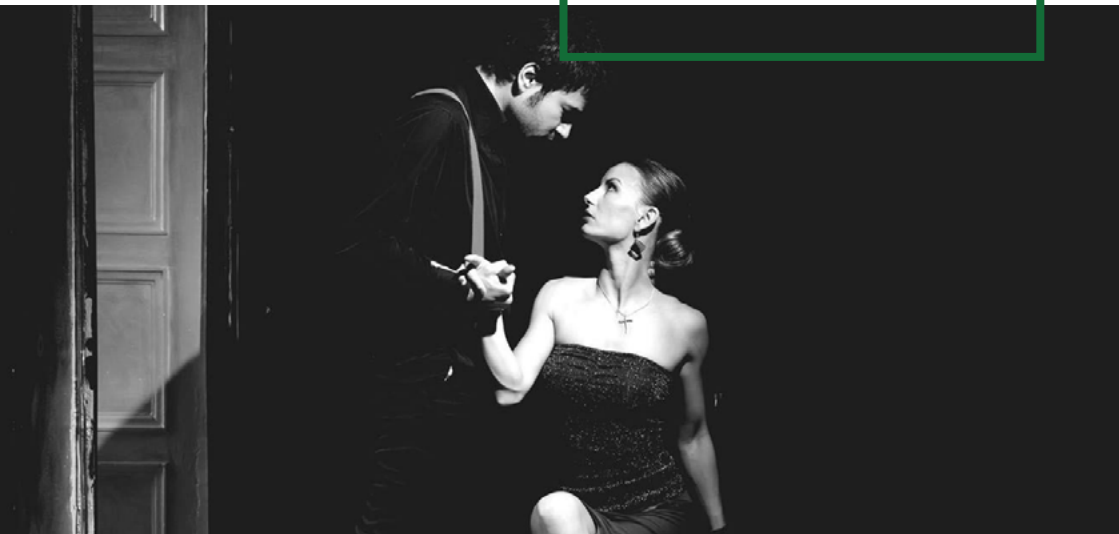
Friday 14th October, 8pm

VENUE

Drill Hall

TICKETS

\$35/\$28 conc.

**SONGMAKERS:
NOSTALGIA****HOMAGE TO PIAZZOLLA**Nicholas Dinopoulos *Bass-Baritone*Andrea Katz *Piano*GINASTERA *Cuyana*GARDELY LEPERA *Mi Buenos Aires querido*PIAZZOLLA Y FERRER *Balada para un loco*VILLOLDO (ARR. BACALOV) *El choclo*COBIÁN Y CADÍCAMO *Nostalgias*MORES Y DISCÉPOLO *Uno*PIAZZOLLA Y FERRER *Oblivion*PIAZZOLLA *Tzigane Tango*PIAZZOLLA Y FERRER *Chiquilín de Bachín*PIAZZOLLA Y FERRER *Balada para mi muerte*ZIEGLER *Sandunga*ZIEGLER Y BALDUCCI *Rojotango*

SONGMAKERS Australia mark the 101st anniversary of Astor Piazzolla with a spirited homage featuring superb artists Andrea Katz and Nicholas Dinopoulos. Passionate pianist Katz returns to her homeland Argentina in a soul-searching voyage to the music that shaped her youth, as bass-baritone Dinopoulos enchants us with songs and tangos by Gardel, Mores, Piazzolla and Ziegler, in a captivatingly nostalgic program threaded together with iconic works of the Argentinian piano repertoire.

“...Dinopoulos has a thrillingly powerful voice...”

– CANBERRA CRITICS CIRCLE

DATE & TIME

Friday 14th October, 10pm

VENUE

Drill Hall

TICKETS

\$41/\$34 conc.
includes beverage

BABKAS, BAGELS AND BLACK FOREST CAKE

LATE NIGHT KLEZMER CARNIVAL
WITH THE STILETTO SISTERS

STILETTO SISTERS

Hope Csutoros *Violin*

Judy Gunson *Piano Accordion*

Jo To *Double Bass*

BLOCH *Jewish Song*

TRADITIONAL YIDDISH
Bublitsky Bagelach

ZORN *Abidan*

ACHRON *Hebrew Melody, Op.33*

TRADITIONAL SEPHARDIC
La Serena

BRANDWEIN *Der Heiser Bulgar*

TRADITIONAL YIDDISH
Bisele Mazel

ZORN *Meholalot (Woundings)*

TRADITIONAL YIDDISH
Chiribim Chiribom

ACHRON *Hebrew Lullaby Op. 35*

COHEN *Halleluiah*

TRADITIONAL HEBREW.
Havah Nagilah

**"Exuberant and
expressive"**

– THE AGE



Are you sitting comfortably with a slice of your favourite chocolate babka? Or perhaps a fresh, warm and yeasty 'sufganiyot'? Enjoy the voluptuous pleasures of the Stiletto Sisters as they serve up a rich and sonorous offering of Jewish music. Forming the emotional heart of this concert are Joseph Achron's brilliant 'Hebrew Melody' and Ernst Bloch's delicate 'Jewish Song', passionate works set amidst a swirling selection of Yiddish, Hebrew and Sephardic delights and a pinch of riotous klezmer frenzy – melded together with the Stiletto Sisters' unique charms.

BRUNCH WITH ST BRIGID

AN ETHEREAL EXCURSION
– SPEAK PERCUSSION: BELL CURVE
– MUNGALA, MADRIGALS & MOZART



In this exquisite and richly historic venue new to our Festival, experience the stunning Federation Handbells in an immersive and intimate performance crafted by Speak Percussion and 12 young performers from Southwest Victoria, brought together in partnership with One Day Studios Warrnambool. Following a splendid morning tea in St Brigid's Church Hall, we present a banquet of heavenly musical delights by Bach, Martinu, Mozart, and Yuin composer Brenda Gifford, featuring the most excellent emerging artists – Alleluja!

DATE & TIME

Saturday 15th October,
9:30am – 12pm

VENUE

St Brigid's Church, Crossley

TICKETS

\$65/\$55 conc.

SPEAK PERCUSSION: BELL CURVE

Kaylie Melville *Director*

Jem Savage *Sound Engineer*

SW VIC performers *Handbells*

MUNGALA, MADRIGALS & MOZART

Kiran Phatak *Flute*

Mana Ohashi *Violin*

Eunise Cheng *Viola*

Daniel Smith *Cello*

UGHETTI Bell Curve

MORNING TEA

GIFFORD

Mungala (Clouds) for solo flute

BACH *Prelude in G major, BWV 1007, for solo cello*

MARTINU

Three Madrigals for violin & viola

MOZART

Flute Quartet in A major, K 298

**“Breathtakingly
impressive”**

– THE WEST AUSTRALIAN, ON SPEAK
PERCUSSION

DATE & TIME

Saturday 15th October, 10am

VENUE

St John's Church

TICKETS

\$35/\$28 conc.

REJUVENATION

BLISSFUL BAROQUE WITH
WATTLESEED ENSEMBLE

WATTLESEED ENSEMBLE

Meg Cohen *Baroque Violin*

Katie Yap *Baroque Viola*

Laura Vaughan *Viola da Gamba*

Nick Pollock *Theorbo*



TELEMANN *Trio Sonata in D Major TWV 42:D9*

CACCINI *Te Lucis Ante Terminum*

PURCELL *Fantasia in 3 parts, IHP161:2*

TYE *Sit Fast a 3*

TRAD. UKRAINIAN (ARR. BAKRNČEV) *Plive Kacha Po Tysyni*

FOOT/PATTI *A Cake in the Post / Daisy's Sunrise*

GREEN *The Spirit of Daphne*

ERLEBACH *Sonata no. 3 Ciaconna – Finale*

ROMAN *Piva*

The remarkably versatile Wattleseed Ensemble, led by award-winning violist and curator Katie Yap, brings together some of Australia's most exciting historical string players, with an ever-imaginative repertoire spanning medieval, baroque, folk and modern contemporary music. Rejuvenation tells the story of fear and hope of re-emergence—green shoots after fire, but also wounds that take time to heal. From Telemann and Purcell to Francesca Caccini and Christopher Tye, the Wattleseed Ensemble explore the mystery of uncharted territory through some of the most fascinating examples of the viol consort, delving into a sound world that captures something ancient but also incredibly modern. Michael Bakrn ev's arrangement of the Ukrainian folk song, *Plive Kacha Po Tysyni* is a heart-rending reminder of the struggles that go on in the world – that we all are facing our own battles in our own times.

A set of tunes by lauded Australian folk musicians Jessica Foot and Claire Patti gently bring us out, reminding us of the beauty of everyday loves—a birthday cake sent across the country in the post, and the sunrise that Patti's daughter Daisy eagerly awaits every morning. In a time of great change, and so much unknown, the final works on the program find comfort in ritual—Brooke Green's *Spirit of Daphne* and an Erlebach *Ciaconna* both contain repeating chord progressions that soothe and transform, before a gleeful *Piva* by Swedish baroque composer Johan Helmich Roman sends you on your way with its rambunctious energy.

**"Singe ye trew & care
not: for I am trew
feare not."**

– CHRISTOPHER TYE



BOUNDLESS BRAHMS

A TEXTURAL FEAST OF THE
OPUS 120 SONATAS

DATE & TIME

Saturday 15th October, 10am

VENUE

Reardon Theatre

TICKETS

\$35/\$28 conc.



David Griffiths *Clarinet*

Stefan Cassomenos *Piano*

Christopher Moore *Viola*

Anna Goldsworthy *Piano*

BRAHMS

*Clarinet Sonata in E-flat major, Op 120
No 2*

BRAHMS

Viola Sonata in F minor, Op 120 No 1

Clarinet or viola? This age old question will be answered with a vertical tasting of Brahms' Opus 120 Sonatas, originally written for the clarinet, but subsequently subsumed by repertoire-needy violists. Brethren in Brahms (and brothers in law) David Griffiths and Christopher Moore expertly fire up the debate, teaming up with Festival dignitaries Anna Goldsworthy and Stefan Cassomenos, in a rare recontextualised pairing of these two magnificent chamber works.

“Ease, refinement, and sincere musicality”

– THE AUSTRALIAN, ON CHRISTOPHER MOORE

“An innate sense of style and finely calibrated emotion”

– GRAMOPHONE (UK), ON DAVID GRIFFITHS

DATE & TIME

Saturday 15th October, 11.30am

VENUE

Reardon Theatre

TICKETS

\$30/\$24 conc.

Stephen McIntyre *Piano*

SCHUMANN *Waldszenen Op 82*

SCHUBERT *Sonata in D major
D.850*

In the age of Romanticism, artists turned to nature for inspiration, with the forest becoming a rich metaphor for mystery and the subconscious. Robert Schumann's *Waldszenen* excursion invokes light and shade, shelter, terror, evil, a particularly magical "Bird as Prophet", hunters, and wildflowers. It was perhaps some of these woodland scenes that Franz Schubert experienced when he wrote the *Sonata in D major* while on a holiday visit to the spa town Bad Gastein, in the Austrian Alps, where he enjoyed walks in the woods, the health cure of the waters, and the mountain scenery.

Festival legend and past artistic director Stephen McIntyre, known nationally and internationally as one of Australia's most treasured pianists, returns to Port Fairy to be our guide through the 19th Century wilderness.

“Passion, grandeur and reverie”

– THE AGE

WALDSZENEN

STEPHEN MCINTYRE PLAYS
SCHUMANN AND SCHUBERT



DATE & TIME

Saturday 15th October, 11:30am

VENUE

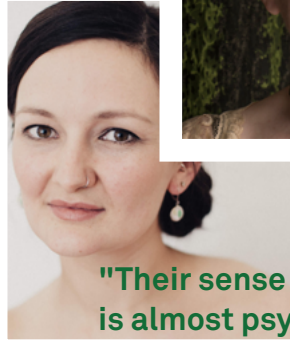
St John's Church

TICKETS

\$35/\$28 conc.

INVOCATIONS

A JOURNEY ACROSS OUR
GREAT SPIRITUAL AND
RELIGIOUS PATHWAYS



VARIOUS PEOPLE INC.

Cheryl Pickering *Voice*

Kate Macfarlane *Voice*

Helen Ayres *Violin*

Philip Griffin *Guitars, Lutes, Oud*

"Their sense of ensemble is almost psychic."

– THE ADVERTISER

BRITTEN *Hodie*

BRITTEN *Spring Carol*

PURCELL *The Blessed Virgin's Expostulation*

COZZOLANI *O dulcis Jesu*

RAVEL *Kaddisch*

L. BOULANGER *Nocturne*

L. BOULANGER *Au pied de mon lit*

GOUGH *Love Song*

CAWRSE *Manam and Komak*

BARBER *The Desire for Hermitage*

MONTEVERDI *Zefiro torna*

GRIFFIN *Whāia te iti kahurangi*

Various People Inc, acclaimed for their innovative and engaging approach to the performance of chamber vocal music, return to Port Fairy after their triumphant 2019 season of Household Names at the Merrijig Inn. Their 2022 line-up features esteemed vocalists Cheryl Pickering and Kate Macfarlane, festival favourite Helen Ayres on violin, and stylistic polyglot Philip Griffin on a bricolage of magnificent chordophones from across Europe and the Middle East. *Invocations* offers a profound, poetic and uplifting sharing of the universal human yearning for spiritual connection, drawing from a rich musical world across centuries of spiritual and religious perspectives. Poems, prayers and proverbs in Middle English, French, Persian, Yiddish, Latin, Arabic and Maori in glorious settings by Britten, Purcell, Cozzolani, Ravel, Boulanger, Gough, Cawrse, Barber, Monteverdi and Griffin offer us pathways to joy, yearning and hope.

CRITIQUES BRUTALES

LUNCH WITH THE
ARTISTIC DIRECTORS



DATE & TIME

Saturday 15th October, 12:45pm

Sunday 16th October, 12:45pm

VENUE

Drill Hall

TICKETS

\$45

includes lunch and beverage

“Massacre du Printemps”

– LE MÉNESTREL, PARIS (JUNE 6, 1914)

Just imagine if you had dedicated your life to the Art of Composition, having slaved over your symphony, toiled on your tone poem, or obsessed over your oratorio – just imagine how it would feel to have years of work vilified with one vicious line of venomous vitriol?

Festival co-directors Stefan and Monica reveal the very best of the worst slanders of our most beloved composers' masterworks, from the “boneless tonal mollusk” (Wagner's *Meistersinger*) to the “scratching a glass plate with a sharp knife” (Tchaikovsky's *Romeo and Juliet*) in a side-splitting session of critical crucifixions from eminent literary lampooners George Bernard Shaw, Virgil Thompson, Hans von Bülow, Friedrich Nietzsche, Oscar Wilde, and many more.

SONGMAKERS: LAURIS ELMS TRIBUTE

HOMAGE TO OUR PATRON

DATE & TIME

Saturday 15th October, 2pm

VENUE

Reardon Theatre

TICKETS

\$35/\$28 conc.



SONGMAKERS AUSTRALIA

Merlyn Quaife *Soprano*

Christina Wilson *Mezzo-Soprano*

Brenton Spiteri *Tenor*

Nicholas Dinopoulos *Bass-Baritone*

Andrea Katz *Piano*

SCHUMANN *Quartets from Spanisches Liederspiel Op.74*

*Es ist verraten
Ich bin geliebt*

BERLIOZ *Les nuits d'été*

*Villanelle
Le spectre de la rose
Sur les lagunes: Lamento
Absence
Au Cimetière: Clair de lune
L'île inconnue*

PURCELL *Music for a while*

TREGASKIS *Vision*

BRITTEN *Down by the Salley Gardens*

PHILLIPS *Plum tree*

PORTER *Love Songs Medley*

The 20th of October this year marks the 91st birthday of legendary contralto, Lauris Elms, our much-loved Festival Patron. From humble beginnings growing up in the Melbourne suburb of Springvale, the talented painter and violin student found herself increasingly drawn to singing. After studying with her beloved Modestis in Paris, she shot to fame as a star of Covent Garden and Sadlers Wells, working with luminaries such as Albert Lance, Dame Joan Sutherland, and Richard Bonyng, who described her voice as “a great and beautiful instrument”.

Festival favourites Songmakers Australia pay tribute to Lauris Elms’ stellar career and important contribution to the Australian vocal landscape, with a beautifully curated program of songs dear to her, including vocal quartets from Schumann and Cole Porter, adored English gems from Purcell and Britten, Berlioz’ masterpiece *Les nuits d’été* which Lauris performed on numerous occasions nationally and internationally, and works from Australian composers Linda Phillips and Alan Tregaskis – whose stunning *Vision* was written and dedicated to Lauris.

“A superb synergy shone through this heart-warming program” – THE AGE

FIND YOUR VOICE

A CREATIVE ADVENTURE WITH
AN ORIGINAL SOUNDTRACK
LIKE NO OTHER

DATE & TIME

Saturday 15th October, 2pm

VENUE

Southcombe Park Stadium

TICKETS

\$35/\$28 conc.



We all need to find our voice. Some of us have lost it along the way, others are unsure whether they ever had one in the first place!

A wise person once said, “speaking comes from the mind, singing comes from the soul” – and there are few choirs with as much soul as the Find Your Voice Choir. Awe-inspiring songs written by members of the Find Your Voice Songwriters Circle have been beautifully orchestrated by Stefan Cassomenos to create this collaborative celebration of human spirit, as they harness the power of community for joy and connection through music.

FIND YOUR VOICE CHOIR

Tom Richardson Creative Director

Kylie Thulborn Choir Coordinator

PORT FAIRY SPRING MUSIC FESTIVAL CHAMBER ORCHESTRA

**"A standing ovation... a roaring reception
from the 2000-strong audience"**

– THE STANDARD (WARRNAMBOOL)



FREE EVENTS

PROUDLY
SUPPORTED BY

KAWAI

KAWAI POP-UP RECITAL HUB

DATE & TIME

Saturday 15th and
Sunday 16th October,
9:30am – 4pm

VENUE

The Hub

Call in between concerts, or stay for some hours, at this popular event!! Enjoy coffee and a snack while Festival artists, masterclass students and audience members pop in all day to entertain and chat. A schedule will be posted at The Hub on the Friday afternoon. Please feel free to Pop Up with a piece of your own to play on a superb Kawai piano – you will be rewarded with coffee on the house!

EXHIBITIONS: SOUTHWEST VICTORIAN ARTWORK

DATE & TIME

Friday 14th October –
Sunday 16th October

VENUE

To be announced

In 2020, for our Digital Festival, we partnered with eight Southwest Victorian visual artists – Colleen Guiney, Kathryn Ryan, Berit Hampel, Heather Wood, Marion Manifold, Carmel Wallace, Jane Downing, and Rachel Peters – whose inspiring artworks brought an evocative sense of place to our geographically and socially distanced Festival. Building on the success of those meaningful partnerships, this year we continue to showcase Southwest Victorian artwork in free exhibitions featuring a host of these phenomenal practitioners. Check out the Festival website for details.

SPRING FESTIVAL WORSHIP

DATE & TIME

Sunday 16th October,
9am

VENUE

St John's Church

The iconic St John's Anglican Church was built in 1856 from local bluestone quarried within the church grounds, and has held continuous worship ever since. Join us for the local parish's Sunday morning worship, which will include a featured performance from outstanding vocal ensemble Polyphonic Voices, directed by Michael Fulcher.

EDUCATION

REGENERATORS

DATE & TIME

Saturday 15th October,
2pm

VENUE

Lecture Hall

TICKETS

\$25/\$20 conc

In another first for the Festival, we showcase the best and brightest performers from Southwest Victoria as they approach their VCE music studies. Join us in this celebration of exciting local talent, giving us a glimpse into the next generation of future music-makers.

KAWAI MASTERCLASSES

DATE & TIME

Saturday 15th October,
10am, 11.30am,
3.30pm and 5.15pm

VENUE

Lecture Hall

Come along and watch Festival artists present masterclasses throughout the day. Local secondary school-age students are invited to sign up for this opportunity to work closely with renowned musicians in a relaxed and friendly setting. Festival Friends and visitors welcome. Places are limited and booking is essential. Please contact festival administration at contact@portfairyspringfest.com.au

SCHOOLS CONCERTS IN PARTNERSHIP WITH MUSICA VIVA IN SCHOOLS TOPOLOGY: TAKING SHAPE

DATE & TIME

Friday 14th October

VENUE

To be announced

Acclaimed ensemble Topology, who move effortlessly between pop, jazz, chamber music and progressive rock, will demystify how to create music. By teaching students to listen, generate ideas, and explore the way melodies are “shaped”, Topology will guide students and teachers through the process of composition. Combining the musical ideas of schools across Australia, each performance will be shaped by the students’ unique contribution. Presented in partnership with Australia’s Musica Viva in Schools, and with the generous support of the Moyne Shire Council, and the Restart Investment to Sustain and Expand (RISE) Fund – an Australian Government initiative.



SPEAK PERCUSSION: BELL CURVE

A REVELATION OF RESONANCE

DATE & TIME

Saturday 15th October, 2:15pm
Saturday 15th October, 3:45pm

VENUE

St Brigid's Church, Crossley

TICKETS

\$35/\$28 conc.

Kaylie Melville *Director*

Jem Savage *Sound Engineer*

SW VIC *performers Handbells*

UGHETTI *Bell Curve*

In this exquisite and richly historic venue new to our Festival, experience the stunning Federation Handbells in an immersive and intimate performance crafted by Speak Percussion and 12 young performers from Southwest Victoria, brought together in partnership with One Day Studios Warrnambool. Bell Curve is a work for spatialised bell players, composed by Artistic Director of Speak Percussion, Eugene Ughetti.

Through the use of click track technology, the players move seamlessly in and out of sync from stunningly complex rhythms to perfect unisons. A massed sound event unfolds across the beautifully restored St Brigid's Church, a world revealed between the attacks and beating patterns of tuned bell resonance.

**“Compelling
performances...
fascinating soundscapes”**

– LIMELIGHT



PAPA & PEJAČEVIĆ

GEMS OF CENTRAL EUROPE
WITH ANNA GOLDSWORTHY
AND FRIENDS



DATE & TIME

Saturday 15th October, 3.30pm

VENUE

Reardon Theatre

TICKETS

\$35/\$28 conc.

Helen Ayres *Violin*

Mana Ohashi *Violin*

Christopher Moore *Viola*

Svetlana Bogosaljevic *Cello*

Jill Griffiths *Double Bass*

Anna Goldsworthy *Piano*

PEJAČEVIĆ *Piano Quartet in D minor, Op 25*

HAYDN (arr. SAUTER) *Piano Concerto in D major, Hob XVIII:11*

Festival royalty and past artistic director Anna Goldsworthy heads up an aristocratic cast, presenting a rarely heard and refreshingly effervescent late Romantic piano quartet from the Hungarian-born Countess Maria (Dora) Paulina Pejačević, the most important Croatian composer of her time. The Austrian composer Joseph Haydn, affectionately revered by his contemporaries and musicological descendants as “Papa” Haydn, inhabited the same geopolitical sphere as Dora Pejačević, and the Magyar influence is palpable in his ebullient final piano concerto, with its rousing Rondo all’Ungarese. Goldsworthy takes centre-stage as soloist in this masterful chamber arrangement of the concerto by American composer-arranger Louis Sauter.

“Infused with elegant spirit and well-crafted determination”

– THE AGE, ON ANNA GOLDSWORTHY

DATE & TIME

Saturday 15th October, 3.30pm

VENUE

Drill Hall

TICKETS

\$35/\$28 conc.

**BROLGA
DAWN****ANCIENT SOUNDS
OF PORT FAIRY**Anne Norman *Shakuhachi***POLYPHONIC VOICES**Michael Fulcher *Conductor*

Composer, author and shakuhachi magician Anne Norman joins with the mellifluous Polyphonic Voices directed by Michael Fulcher to present a multi-sensory experience which transcends time and space, interweaving ancient traditions with modern day landscapes. She gathers threads of poetry, birdsong, human song, and the haunting sounds of the Japanese bamboo flute, to create her transformative musical tapestry.

The program centrally features her world premiere Brolga Dawn which incorporates field recordings of birds from the western district wetlands, in scintillating surround sound.

“It was as if she could lure pixels of sound and whip them into line with the control of her breath...”

– THE MERCURY, HOBART

TRAD. Nesting Cranes

NORMAN Brolga Dawn (World Premiere)

NORMAN Whispered Shadows

DEBUSSY Syrinx

HILDEGARD VON BINGEN Wherever They Go

LEEK Kondalilla

NORMAN Evening Cantillations

NORMAN Moon in Water

NORMAN Heart Moon (World Premiere)

REFLECTIONS

LOUIS HURLEY IN RECITAL



Brilliant young Sydney-based tenor Louis Hurley joins Festival co-director Stefan Cassomenos for a luminescent twilight recital of exquisitely reflective German-language art song. Our stage is set with an opening solo piano work *In Reflective Mood* by past festival director Michael Easton, whose founding artistic vision established lieder as a treasured essential element of the Port Fairy Spring Music Festival, before submerging ourselves in the warm evening sentiment of *Abendempfindung* and a constellation of Mozart's masterpieces from the late 1780s, concluding the set with the aptly nostalgic *Sehnsucht nach dem Frühling*, "longing for the spring." The yearning continues with Schumann's bittersweet *Liederkreis Op 24*, written as Robert moved heaven and earth to gain the hand of composer-pianist Clara Wieck, undeterred by her father's disapproval. The 1840 cycle, based on several poems from Heinrich Heine's *Buch der Lieder*, similarly pines for the spirit of love to reunite one with their beloved.

DATE & TIME

Saturday 15th October, 5.15pm

VENUE

Reardon Theatre

TICKETS

\$35/\$28 conc.

Louis Hurley Tenor

Stefan Cassomenos Piano

EASTON *In Reflective Mood*

MOZART *Selected Lieder*

Abendempfindung

An Chloë

Das Lied der Trennung

Lied der Freiheit

Das Veilchen

Sehnsucht nach dem Frühling

SCHUMANN *Liederkreis Op 24*

Morgens steh' ich auf und frage

Es treibt mich hin

Ich wandelte unter den Bäumen

Lieb' Liebchen

Schöne Wiege meiner Leiden

Warte, warte, wilder Schiffmann

Berg und Burgen schau'n herunter

Anfangs wollt' ich fast verzagen

Mit Myrten und Rosen

"Louis Hurley's honeyed tenor caressed every word..."

- LIMELIGHT



DATE & TIME

Saturday 15th October, 5.15pm

VENUE

Drill Hall

TICKETS

\$35/\$28 conc.

Anna-Lee Robertson *Voice*

Mark Jones *Piano*

GUETTEL

Baby moon

RODGERS & HAMMERSTEIN

Ten minutes ago

BERNSTEIN

A little bit in love

RODGERS & HAMMERSTEIN

I enjoy being a girl

LAVIN

A musical apology

SONDHEIM

You could drive a person crazy

JOHNSON/CROSBY

Beautiful dreamer

ANDRE/SCHWANDT/KAHN

Dream a little dream

HAMES

That's all

FLAHERTY/AHRENS

Come down from the tree

**“Suitably
vaudevillian gusto”**

– AUSTRALIAN STAGE

CABARET: AFTER BIRTH

**A PANACEA FOR EVERY
EXHAUSTED AND DEVOTED PARENT**



Port Fairy native Anna-Lee Robertson returns home to present her very own original Cabaret show – “After Birth”, an irreverent and affectionate account of the trials and tribulations of her life as a new mum.

Capturing the bittersweet emotions of new parenthood, she weaves her own hilarious tales of baby-wrangling through a perfectly curated and gloriously sung collection of timeless songs from Bernstein, Guettel, Flaherty & Ahrens, Rodgers & Hammerstein, and Sondheim.

DATE & TIME

Saturday 15th October, 7.45pm

VENUE

Southcombe Park Stadium

TICKETS

\$40/\$32 conc.

SHUGOREI

Nozomi Omote *Percussion*

Thomas Green *Electronics*

BLACK SQUARE STRING QUARTET

Camille Barry *Violin*

Mike Patterson *Violin*

Katie Yap *Viola*

Dan Curro *Cello*

Shugorei perform an utterly unique, continuous set, with highly energetic sections interspersed with finespun, dream-like moments. The music grows organically from delicate beginnings, featuring what in a parallel universe might be called classical sounds, into exuberant, constantly surprising hybrid of electronic dance music and percussively driven art music.

The energy arrives in waves, with the eye-popping peaks tamed by lush valleys of ambience. Nozomi Omote's virtuosic delivery is constantly on display, and, moment to moment, Thomas Green's arrangements feature "surprise cameos" of music you may know quite well, but transfigured in this alarming and novel formation. Shugorei are joined on stage by the Black Square String Quartet, who add an enchanting orchestral expanse to the sound world. From its exquisite entry to its explosive conclusion, Guardian Spirit is an incomparable mind-and-body experience of ecstatic transcendence.

GUARDIAN SPIRIT

A 90-MINUTE MUSICAL ODYSSEY
TO REALMS BEYOND YOUR
WILDEST DREAMS



“Some of the most exciting live music I’ve seen in a long time...”

– CUT COMMON

SATURDAY GALA: GOLDNERS

A SWEEPING PANORAMA OF
QUARTETS FROM THE EARLY
ROMANTIC TO RIGHT NOW

DATE & TIME

Saturday 15th October, 7.45pm
(2-hour performance including
interval)

VENUE

Reardon Theatre

TICKETS

\$50/\$40 conc.

GOLDNER STRING QUARTET

Dene Olding *Violin*

Dimity Hall *Violin*

Irina Morozova *Viola*

Julian Smiles *Cello*

SDRAULIG *String Quartet No 1*

VASKS *String Quartet No 3*

~ INTERVAL ~

SCHUMANN *String Quartet No
3 in A*

VARIOUS *Goldner Variations on
Beethoven's Ode to Joy (2022)*

Nationally treasured and internationally celebrated, the Goldner String Quartet join us for their first ever appearance at the Port Fairy Spring Music Festival,

presenting a gala program featuring four works of major significance – the widely acclaimed String Quartet No 1 of venerated emerging Australian composer Harry Sdraulig, which was commissioned by Port Fairy Spring Music Festival in 2020 with the assistance of the ABC Fresh Start Fund; Pēteris Vasks' third quartet, a monumental tenet of faith and expression of hope, self-described as a tribute to 'Christmas – Peace on Earth'; Schumann's third quartet, an emotionally-charged contribution to the genre which he described as a "by turns beautiful and even abstrusely woven conversation among four people"; and concluding with the recently premiered Goldner Variations, commissioned by the Australian Festival of Chamber Music to celebrate the ensemble's 25th anniversary – a collection of variations



on Beethoven's ode to joy, to hope, and to unity, written by selected composers with whom the Goldners have had a relationship over their many years of steadfast commitment to contemporary Australian music.

"One of the finest string quartets around today"

– THE GUARDIAN, UK



CAIRO CLUB ORCHESTRA

SIZZLING SOUNDS OF SWING AND DANCE
FROM THE 1920s & 1930s



DATE & TIME

Saturday 15th October, 10:15pm

VENUE

Drill Hall

TICKETS

\$41/\$34 conc. Includes beverage.

CAIRO CLUB ORCHESTRA

Peter Milley *Band Leader*

The Cairo Club Orchestra lives fully in the present day. The band members have smartphones and Facebook pages, but their bright-spirited music takes us back to the glory days of the 1920s and 1930s.

Their music – elegant, hot, raucous and funky – is no dead museum of days gone by. Rather it is a smooth-running time machine that takes us back to a world where people knew how to live fully and exuberantly. The spirits of Cab Calloway, Duke Ellington and a thousand other musicians are smiling because of Peter Milley and his swinging friends.

**"They embody happiness
in swingtime..."**

– MICHAEL STEINMAN, JAZZ LIVES

DATE & TIME

Sunday 16th October,
10am – 3pm

VENUE

Lecture Hall

TICKETS

FREE ENTRY

THE SENSORIUM

ART MEETS SOUND
IN AN IMMERSIVE
INSTALLATION

"A haunting
and evocative
soundtrack..."

– THE ADELAIDE REVIEW



Gareth Colliton *Co-Curator*

Monica Curro *Co-Curator*

Thomas Green

Composer/Soundscapes

On Sunday, press pause on the hustle and bustle of Festival revelry to step inside The Sensorium, our new alpha-wave inducing, multi-sensory art and sound experience in the Lecture Hall. The many sonic landscapes of composer and sound wizard Thomas Green are symbiotically paired with images from dynamic visual artists from Southwest Victoria, co-curated by the legendary and multifaceted art guru Gareth Colliton, alongside Festival co-director Monica Curro.

Take five minutes or five hours – it's there for your consumption, contemplation, and regeneration.

DE PROFUNDIS

THE DAZZLING VIRTUOSITY
OF JAMES CRABB

DATE & TIME

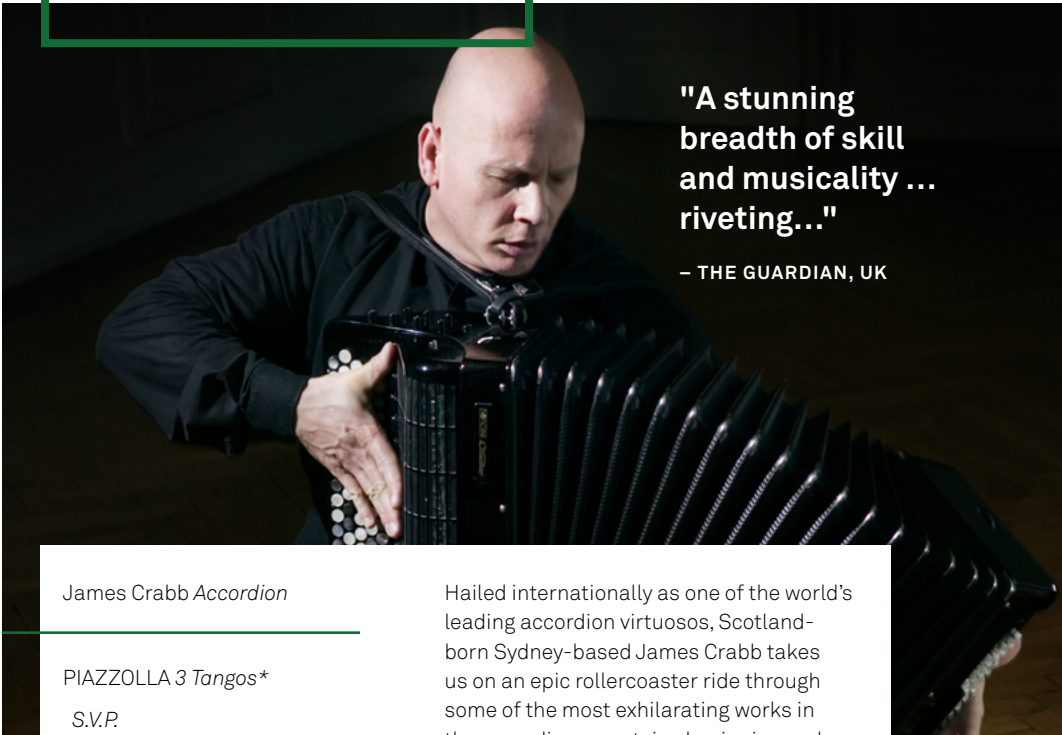
Sunday 16th October, 10am

VENUE

St John's Church

TICKETS

\$30/\$24 conc.



"A stunning
breadth of skill
and musicality ...
riveting..."

– THE GUARDIAN, UK

James Crabb *Accordion*

PIAZZOLLA *3 Tangos**

S.V.P.

Tzigane Tango

Preparense

GUBAIDULINA *De Profundis*

RAMEAU *Le Rappel des Oiseaux*

RAMEAU *L'Entretien des Muses*

RAMEAU *La Poule*

LEDGER *Talk* (World Premiere)

PIAZZOLLA *Tanti Anni Prima**

KATS-CHERNIN *Slicked Back Tango**

(*Arranged by James Crabb)

Hailed internationally as one of the world's leading accordion virtuosos, Scotland-born Sydney-based James Crabb takes us on an epic rollercoaster ride through some of the most exhilarating works in the accordion repertoire, beginning and ending with an intoxicating selection of gripping tangos by Astor Piazzolla and Elena Kats-Chernin.

Captivating our most subliminal senses, Sofia Gubaidulina's awe-inspiring *De Profundis* takes its cue from Psalm 130 "From the depths, O Lord, I call to you" before we're launched into the Late Baroque with three contrastingly imitative and characterful masterpieces by Jean-Philippe Rameau – and then propelled back to 2022 with a new work hot off the press, commissioned by Crabb himself from illustrious Australian composer James Ledger.

MOTHERS' SUITE SWEET MOTHERS

REVERENTIAL REFLECTIONS ON
WONDERFUL WOMEN

DATE & TIME

Sunday 16th October, 10am

VENUE

Drill Hall

TICKETS

\$35/\$28 conc.

Camille Barry *Violin*

Dan Curro *Cello*

Kellee Green *Piano*

GREEN *So, I Am Shouting*

GREEN *The Curlew Cried*

GREEN *Mothers' Suite Sweet Mothers (world premiere)*



Extraordinary women are all around us – friends, sisters, daughters, aunts, but especially our mothers. Camille Barry and Kellee Green are both mothers who are musicians, and with composer Thomas Green were commissioned by the ABC to produce *Mothers' Suite Sweet Mothers*. Each of the work's five movements represents a stage in the life of mother and child, from earliest tender moments with the infant, through to a time when the child, now grown, breaks the bonds of childhood and the mother must let them go.

So, *I Am Shouting* is an ululation for solo violin dedicated to small-statured women, whose passion and drive demands that they be heard. *The Curlew Cried* is set to an Oodgeroo Noonuccal poem about the death of a tribe member, and how the curlew comes to guide their spirit away, so they have nothing to fear. Thomas Green's soul-enriching music takes its inspiration from extraordinary women, and pays homage to their strength, wisdom, and gentleness.

“Joyful and ambient”

**– STAGE WHISPERS,
ON THOMAS GREEN**

LULLABY

CRADLE CLASSICS WITH
CASSOMENOS



**“... music that invites
contemplation, and that
radiates tenderness,
empathy – and yes, hope”**

–THE AGE, ON NAT BARTSCH

DATE & TIME

Saturday 15th October, 11.30am

VENUE

Drill Hall

TICKETS

\$30/\$24 conc.

CHOPIN *Berceuse Op 57*

CHOPIN/CASSOMENOS

Berceuse Reimagined (2013)

BRAHMS/CORTOT *Wiegenlied Op 49 No 4*

BRAHMS/CASSOMENOS

Wiegenlied Reimagined (2022)

CROSTHWAITE

Selections from 16 Lullabies (2020)

BARTSCH

*Selections from Forever, And No Time At
All (2017)*

GRANDAGE

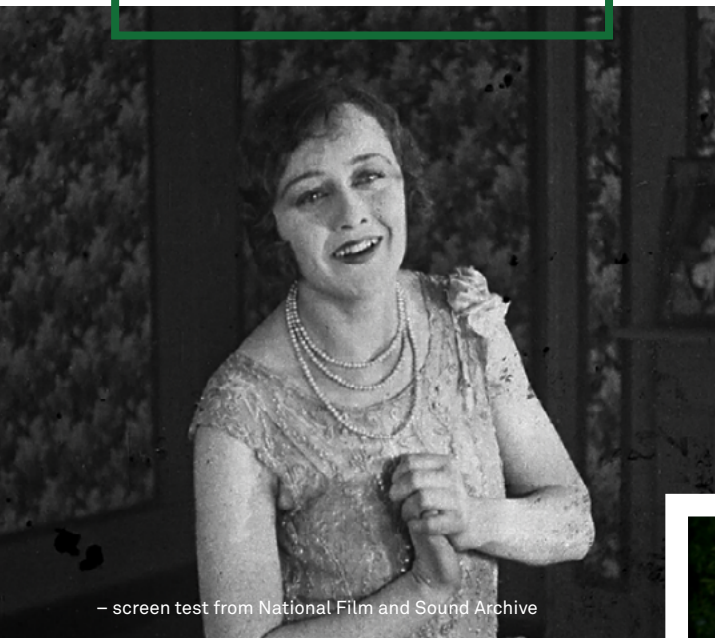
Some Nights There Are No Words (2022)

Stefan Cassomenos Piano

The cradle song has glowed as a tender centrepiece of our shared human artistic life for tens of thousands of years, sparking from the fusion of our natural parental instincts with the genesis of our ability to sing. In this special accessible Festival performance open to all audiences, and particularly to new parents and their infants of all ages, Festival co-director Stefan Cassomenos presents a lovingly crafted program of lullabies featuring well-known classics by Chopin & Brahms, presented in their original form and re-imagined, alongside recently composed lullabies by much-loved Australian composers Hugh Crosthwaite, Nat Bartsch, and past artistic director Iain Grandage. Often simple and repetitive, the lullaby persists across cultures as one of the best ways we have to communicate with our infant – to calm them, to focus them, to help them learn to communicate, to fill their growing minds with cultural knowledge, to magically lull them to sleep, and to express our love.

AUSTRALIA FAIR?

AN INQUISITION OF IDENTITY



– screen test from National Film and Sound Archive

The sensational Partridge String Quartet joins forces with celebrated Melbourne screen composer Bryony Marks for her world premiere *Australia Fair? Volume I*.

Showing a montage of Australian National Film and Sound Archive footage of “ordinary” Australian life spanning the 1920s to the 1960s, the work highlights how notions of Australian identity and gender expectations have fluctuated throughout the decades.

Her masterful music simultaneously serves the images, and goes way beyond, into non-verbal commentary. Holly Harrison’s high-octane *Balderdash* sets the scene for our deep dive into this exploration of who we are, or is it who we think we are?

DATE & TIME

Sunday 16th October, 11:30am

VENUE

Reardon Theatre

TICKETS

\$35/\$28 conc.

PARTRIDGE QUARTET

Jos Jonker *Violin*

Mana Ohashi *Violin*

Eunise Cheng *Viola*

Daniel Smith *Cello*

HARRISON *Balderdash*

MARKS *Australia Fair?
Volume I (World Premiere)*



“Bryony Marks’ haunting score is menacing and yet uplifting...”

– THATMOMENTIN.COM

SCHUBERT SWANSONG

PARTRIDGE & BOGOSAVLJEVIC
SCALE THE SUMMIT



"Beautiful musical interaction
... experienced artistry ...
warm and charismatic"

– CLASSIC MELBOURNE



DATE & TIME

Sunday 16th October, 2pm

VENUE

Reardon Theatre

TICKETS

\$35/\$28 conc.

PARTRIDGE QUARTET

Jos Jonker *Violin*

Mana Ohashi *Violin*

Eunise Cheng *Viola*

Daniel Smith *Cello*

Svetlana Bogosavljevic *Cello*

SCHUBERT *String Quintet in
C major, D 956*

Captivating cellist and acclaimed chamber musician Svetlana Bogosavljevic joins the dynamic Partridge Quartet for an epic journey to the pinnacle of classical chamber music – Franz Schubert's sublime *String Quintet in C major*.

Composed at the same time as his *Schwanengesang* and the last three piano sonatas, and completed just two months before his death, this expansive work transports us to the mountaintop, from where we see verdant valleys, glistening rivers, a distant thunderstorm, entwined lovers, and village revelries – a truly panoramic soundscape.

THE ANCIENT SEA

A RICH TAPESTRY WOVEN FROM
SONGLINES THROUGH HISTORY

DATE & TIME

Sunday 16th October, 2pm

VENUE

St John's Church

TICKETS

\$35/\$28 conc.



BLACK SQUARE STRING QUARTET

Camille Barry *Violin*

Mike Patterson *Violin*

Katie Yap *Viola*

Dan Curro *Cello*

Chloe Ann Williamson
Double Bass

GIFFORD *Barra Barra*
(Sea) (World Premiere)

TRADITIONAL *Staedelil*

TRADITIONAL *Polska*
from Dorotea

LAWES *Fantazyja in G minor*

GRANTHAM *Incantation*

SJOLIN *Intermezzo*

SORENSEN *Shine You no More*

DOWLAND *Lachrimae Antiquae*

SPRUANCE *Séraphîta*

PATTERSON *Romanian Rhapsody*



Intrepid adventurers, the Black Square String Quartet, embark on a sonic voyage across eras and cultural heritages. Yui composer Brenda Gifford's *Barra Barra*, commissioned in 2022 by Port Fairy Spring Music Festival, conjures the transcendental power of the ageless sea, whilst Richard Grantham's *Incantation* and Trey Spruance's *Séraphîta* evoke the mysticility of medieval times.

We drop anchor in the British Isles with the antique airs of William Lawes and John Dowland, and elsewhere in Europe with evocative Nordic and Balkan folk tunes from time immemorial, before concluding with the electrifying *Romanian Rhapsody* by the Black Square's own Mike Patterson.

**“A roller-coaster of sonority and
musical images”**

– ARTSHUB, ON BRENDA GIFFORD

Leah Oswin *Soprano*

SONGMAKERS AUSTRALIA

Merlyn Quaife *Soprano*

Christina Wilson
Mezzo-Soprano

Brenton Spiteri *Tenor*

Nicholas Dinopoulos
Bass-Baritone

Andrea Katz *Piano*

Monica Curro *Concertmaster*

Michael Dahlenburg
Conductor

**PORT FAIRY SPRING MUSIC
FESTIVAL ORCHESTRA**

Featuring members of:

Corpus Medicorum

Warrnambool Symphony
Orchestra

SW VIC instrumentalists

**PORT FAIRY SPRING MUSIC
FESTIVAL CHORUS**

Featuring members of:

Polyphonic Voices

Cantori

U3A Port Fairy Choir

SW VIC choristers

VAUGHAN WILLIAMS

Serenade to Music

TUTTY *New Work (World
Premiere)*

MOZART *Excerpts from Il
Seraglio and Così Fan Tutte*

BIZET *Excerpt from Carmen*

MASSENET *Méditation from
Thaïs*

LEHAR *Excerpt from The
Merry Widow*

VERDI *Excerpts from Nabucco
and La Traviata*

CLOSING GALA: REGENERATION

REUNITED IN SONG

DATE & TIME

Sunday 16th October,
3:30pm

VENUE

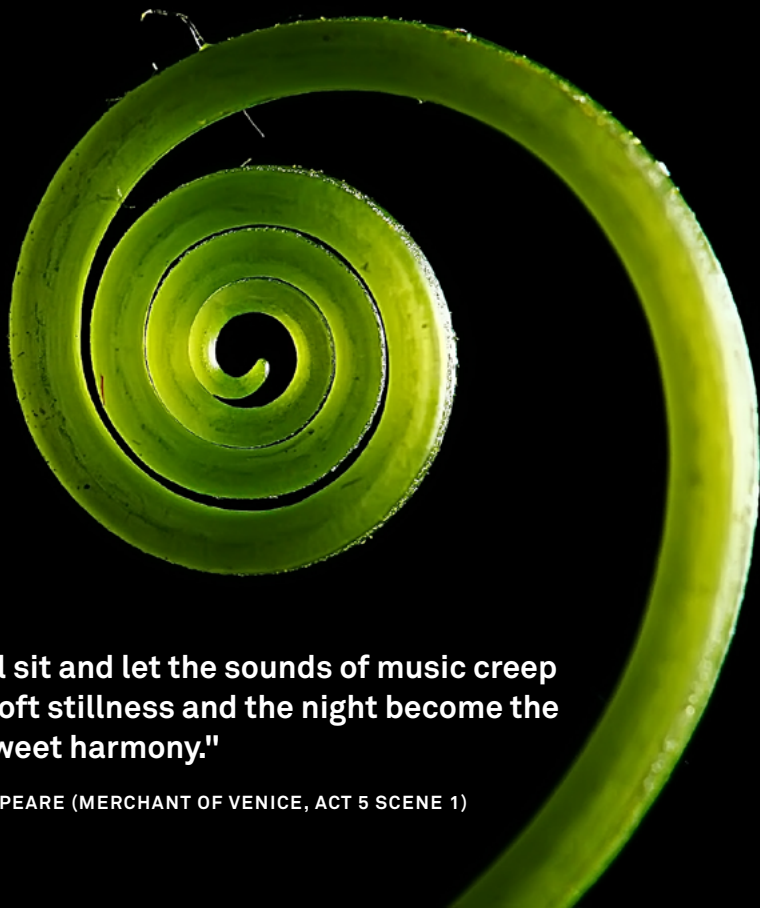
Southcombe Park Stadium

TICKETS

\$40/\$32 conc.

Our 2022 Closing Gala brings together instrumentalists and choristers from all over Southwest Victoria, alongside Melbourne musicians and magnificent soloists, under the baton of esteemed conductor Michael Dahlenburg, on one enormous shared stage.

REGENERATION bursts into life with Ralph Vaughan Williams' glorious *Serenade to Music*, inspired by the discussion of the *Music of the Spheres* in Shakespeare's *Merchant of Venice*, and written to mark the jubilee of the conductor Sir Henry Wood. We then witness the world premiere of a fresh new work created collaboratively by local Southwest schoolchildren with composer and renowned pedagogue Dermot Tutty. Our 2022 Festival concludes with an uplifting selection of the most rousing opera choruses and arias, with which we encourage you to sing along, leaving our souls regenerated and our hearts filled with hope and with gratitude that we have once again regathered in our beloved Port Fairy.



**"Here we will sit and let the sounds of music creep
in our ears; soft stillness and the night become the
touches of sweet harmony."**

- WILLIAM SHAKESPEARE (MERCHANT OF VENICE, ACT 5 SCENE 1)



THANK YOU

WE ACKNOWLEDGE THE
GENEROUS SUPPORT OF
OUR SPONSORS & DONORS

DIRECTORS' CIRCLE (\$10K+)

Cope-Williams Arts Foundation
Ross and Anna Hicks
Isobel and David Jones Family
Foundation

FESTIVAL BENEFACTOR (\$2K+)

Jennifer Brukner OAM
King and Collins
Alison and David Lansley
Randal and Asako Williams

CONCERT PATRON (\$500+)

Jenny Anderson
Prue Brown
Elizabeth and Alex Chernov
AC QC
Anne and Graham Evans AO
Tamara Fraser AO
Mary-Jane Gething
Lesley Griffin
Rod Hunt
Peter Jopling AM QC
Merran Koren
Eda Ritchie AM
Joy Selby Smith
Mary Vallentine AO
Voi Williams OAM

ENSEMBLE PATRON (\$100+)

Anna Affleck
Jennifer Barke
Alison Brookman
Peter Burch
Alastair and Sue Campbell
Dizzy Carlyon
Hugh and Cherry Collins
Margot Costanzo
Carolyn Crowe
Anne Dowling
Jean Dunn
Catherine Elder
Rachel Faggetter and Barry
Jones AC
John Fast
Andrew Ford
Anne Frankenberg
Ferdinand Gassauer
Iain Grandage
Tim Gurry
Sally and Alan Hutchison
Pamela Jonas
Mary-Jane Joscelyne
Clare and Neil Kearney

Barbara and Peter Kolliner OAM
Genevieve Lacey
John MacInnes
Susie Mackinnon
June Marks
Jean McMullin
Alana Mitchell
Mary O'Connor
Hannah and Leon Piterman
Ralph Renard
Chris Renwick
Elizabeth Romanowski
Kaye Salisbury and Bart Wissink
Anne and Geoff Skinner
Peter Strickland
Antonia Syme AM
James Tait
Gillian Trahair
Peter and Rosemary Turner
Robert Walsh
Susan Warburton

With thanks also to many others

SPONSORS

GOVERNMENT & CORPORATE



The F.J. Foundation



ELECTRICAL
& DATA
SUPPLIERS



VICTORIAN
OPERA



CORPUS MEDICORUM

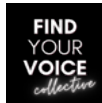
ARTFUEL



creative
partnerships
australia



SPEAK
PERCUSION



SINCLAIR Wilson
ACCOUNTANTS & BUSINESS ADVISORS



FESTIVAL ADMIN

+ CREDITS & IMPORTANT INFO

FESTIVAL BOARD

Penny Hutchinson
Chair

Monica Curro
Stefan Cassomenos
Artistic Directors

Christopher Thompson
Treasurer

Alison Lansley
Secretary

Dawn Holland
Production Manager

Barry Levinson
Venue Manager

Graham Evans AO
Gavin Franklin
William Moore
Eda Ritchie AM
Peter Strickland

GENERAL MANAGEMENT

Tony Grybowski & Associates

OPERATIONS CO-ORDINATOR

Laura Telford

ADMINISTRATOR

Emma Moloney

SET DESIGN

Wen Shobbrook

PATRON

Lauris Elms AM, OBE

FESTIVAL DETAILS

Port Fairy
Spring Music Festival Inc

A0021392G
ABN 51 392 754 636
PO Box 53 Port Fairy,
Victoria, Australia 3284
Phone (03) 5568 3030

Email: contact@portfairyspringfest.com.au

Web: portfairyspringfest.com.au

WITH SPECIAL THANKS TO

ABC Classic, Fresh Start Fund
ABC South West Victoria
Arts Music
Australian Digital Concert Hall
Australian World Orchestra
Phillip Antippa OAM
Chris Arnold AM
Antonia Balmer
Warrick Baker
Lynda Beekhof
Emily Bisland
Blarney Books
Budj Bim Cultural Landscape
Patrick Burns
Helen and Des Bunyon
Cassette
Jo Canham
Cantori
Deborah Cheetham
Coffin Sally
Janet Collins
Gareth Colliton
Fr Alan Courtney
Customs House Gallery
Ashley Dyer
Fr Thomas Edalay
Paul Evans
The F Project
Anne Frankenberg
Jo Grant
Jillian Gundermann
Jeanette Hajncl
The Hamilton & Alexandra
College
Tony Herbert
Elizabeth Hill-Cooper
Ben Hiscock
Ann Holmes
iXplainIT
Susan Jones
Leeroy Kirk-Walker
Karen Kyriakou
Langley's Accommodation
Jeremy Lee
Chris Loorham
Olga Lyons
Alistair McCosh
John MacInnes
Kaylie Melville

Jonathan Mills
Richard Mills
Robert Murray
Museums Victoria
Mairi Nicolson
Leah Oswin
Hannah O'Neill-Smart
Andrew Philpot
Port Fairy Consolidated School
Port Fairy Folk Festival
Production Crew
Fiona Pugh
Mark de Raad
Rebecca's Cafe Port Fairy
Rodney Reynolds
Christine Roeger
Andrew Rumsey
Braydon Saunders
Scenic Art Studios
Peter Schneider
Philip Shaw
Short Black Opera
Ben Singh
St Brigid's Church, Crossley
St John's Church, Port Fairy
St Patrick's Parish Primary School
Port Fairy
Stage Two Lighting
James Tait
Kath Tanner
David Trussler
U3A Port Fairy
Eugene Ughetti
Victorian College of the Arts
Secondary School
Warrnambool Organ Festival
Warrnambool Symphony Orchestra
Jennifer Whitehead
Justin Williams
5stream

PLEASE NOTE

All details are correct at the time of printing. Performers, works and venues are subject to change without notice.

ACCOMMODATION ENQUIRIES

Port Fairy & Region
Visitor Information Centre, Bank Street
Port Fairy, Victoria 3284
Tel: (03) 5568 2682 Fax: (03) 5568 2833
Email: vic@moynce.vic.gov.au

NEXT YEAR

The Port Fairy Spring Music Festival next year will be held over the weekend of the 13-15th October 2023.

For updates about the Festival during the year, please visit the website portfairyspringfest.com.au

HOW TO BOOK CONCERT TICKETS

PORTFAIRYSPRINGFEST.COM.AU

TICKET BOOKINGS

Tickets can be booked through our website at

www.portfairyspringfest.com.au

or by calling us on

(03) 5568 3030

or email us on

tickets@portfairyspringfest.com.au

To select your concerts and book your tickets click on the **“Book Tickets”** tab on the homepage or the **“View Program”** tab at the top of your screen.

From here you will be able to view information about all of this years performances and book tickets by selecting the show you would like to see. Simply click on the show you are interested in then click **“Book Now”** or scroll to the bottom on the page where you may start adding tickets straight away.

For concerts with a set seating-plan you will be asked to select your seat. You can do this by choosing a seat on the map displayed and then choosing your ticket type.

Please note that you can select more than one seat by repeating this step.

To complete your purchase click on the green **“Checkout”** button at the bottom of the next screen. Alternatively you can continue shopping by pressing **“Add More Events”**

For friends of the festival please be aware that you will need to reset your password this year – which is a one off experience so that you can access the updated system, review your tickets and access your receipts at any time.

If you require any assistance with ticketing don't hesitate to call us on **(03) 5568 3030**.



BOOK ONLINE

For online bookings go to **portfairyspringfest.com.au** and follow the prompts.



BY PHONE

(03) 9571 7391

Please have details of the concerts you want to attend and your credit card and concession details ready.

REFUNDS: We will provide a full refund for unwanted tickets returned and received by us before Wednesday 13th October 2022. No refunds will be paid for tickets received after that date. If we have to cancel or re-schedule a concert, we will fully refund the cost of tickets or replace your tickets with tickets to the new concert, whichever you prefer.



BECOME A FRIEND OF THE FESTIVAL

Supporters of the Port Fairy Spring Music Festival have the opportunity to enhance their involvement by becoming Friends of the Festival. The Friends make an important contribution to the celebratory atmosphere of the Festival weekend and to the economic sustainability of the organisation.

The annual subscription is \$40 for one person or \$70 for two and entitles you to:

- Priority booking of tickets and seat allocations
- Vocal Lines newsletter
- Invitation to the Launch of the Festival Program in Melbourne or in Port Fairy
- Invitation to the Festival Opening Reception in Port Fairy
- Attend and vote at the Festival AGM

We encourage existing Friends to extend the network by introducing new Friends to the Festival.

For more information about joining the Friends, please phone us on **(03) 5568 3030** or **email us**.

Please note that your subscription must be valid for the Festival weekend to gain access to priority ticket bookings.

To become a Friend simply join online at www.portfairyspringfest.com.au/become-a-friend/



SUPPORT US FURTHER WITH A TAX-DEDUCTIBLE DONATION

The Festival relies on continuing philanthropic support to enable us to present high quality performances to a wide audience. We welcome your support at any level.

The Port Fairy Spring Music Festival Inc Public Fund is listed on the Register of Cultural Organisations under Subdivision 30-F of the Income Tax Assessment Act 1997. Donations over \$2 to the Festival's public fund are tax deductible.

For more information and to donate online, go to www.portfairyspringfest.com.au/contact-us/donors/ or phone us on (03) 5568 3030

FESTIVAL SUMMARY

FRIDAY

PERFORMANCE	TIME	VENUE	PAGE
KAWAI OPENING GALA: REGATHERING	8pm	Reardon	10
SONGMAKERS: NOSTALGIA	8pm	Drill Hall	12
BABKAS, BAGELS & BLACK FOREST CAKE	10pm	Drill Hall	13

SATURDAY

BRUNCH WITH ST BRIGID	9:30am – 12pm	St Brigid's	14
– SPEAK PERCUSSION: BELL CURVE 1			
– MUNGALA, MADRIGALS & MOZART			
REJUVENATION	10am	St John's	15
BOUNDLESS BRAHMS	10am	Reardon	16
WALDSZENEN	11.30am	Reardon	17
INVOCATIONS	11.30am	St John's	18
SATURDAY LUNCH: CRITIQUES BRUTALES	12.45pm	Drill Hall	19
SONGMAKERS: LAURIS ELMS TRIBUTE	2pm	Reardon	20
FIND YOUR VOICE	2pm	Stadium	21
REGENERATORS	2pm	Lect Hall	23
SPEAK PERCUSSION: BELL CURVE 2	2:15pm	St Brigid's	24
PAPA & PEJAČEVIĆ	3.30pm	Reardon	25
BROLGA DAWN	3.30pm	Drill Hall	26
SPEAK PERCUSSION: BELL CURVE 3	3:45pm	St Brigid's	24
REFLECTIONS	5.15pm	Reardon	27
CABARET: AFTER BIRTH	5.15pm	Drill Hall	28
GUARDIAN SPIRIT	7:45pm	Stadium	29
SATURDAY GALA: GOLDNERS	7:45pm	Reardon	30
CAIRO CLUB ORCHESTRA	10:15pm	Drill Hall	32

SUNDAY

SPRING FESTIVAL WORSHIP	9am	St John's	22
THE SENSORIUM	10am-3pm	Lect Hall	33
DE PROFUNDIS	10am	St John's	34
MOTHERS' SUITE SWEET MOTHERS	10am	Drill Hall	35
LULLABY	11.30am	Drill Hall	36
AUSTRALIA FAIR?	11.30am	Reardon	37
SUNDAY LUNCH: CRITIQUES BRUTALES	12.45pm	Drill Hall	20
THE ANCIENT SEA	2pm	St John's	38
SCHUBERT SWANSONG	2pm	Reardon	39
CLOSING GALA: REGENERATION	3.30pm	Stadium	40

LEGEND

Reardon: Reardon Theatre **St John's:** St John's Church **Lect Hall:** Lecture Hall **Drill Hall:** Drill Hall
at the Victoria Hotel **Stadium:** Southcombe Park Stadium **St Brigid's:** St Brigid's Church, Crossley

PORT FAIRY

Port Fairy is one of Victoria's premier tourist destinations, with wide offerings from a world-class golf course to excellent beach and heritage walks.

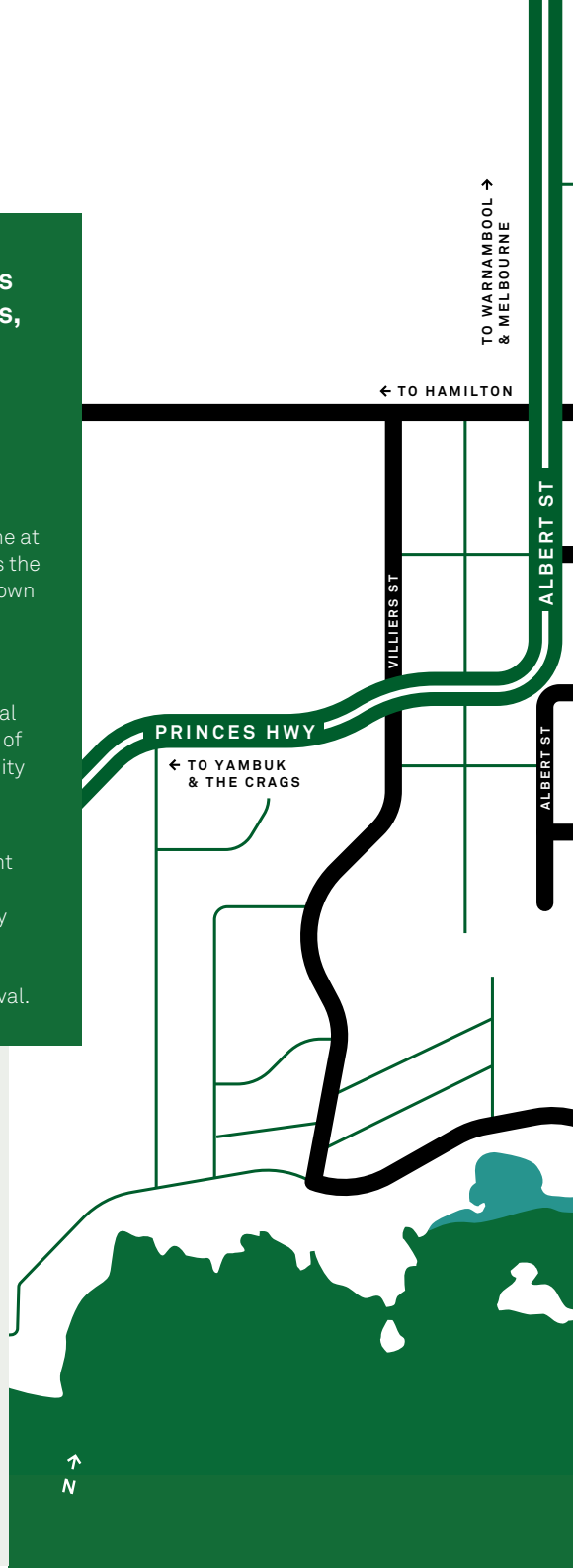
Situated at the end of the Great Ocean Road, 290 kilometres west of Melbourne at the point where the Moyne River enters the Southern Ocean, this historic coastal town is truly unique in character.

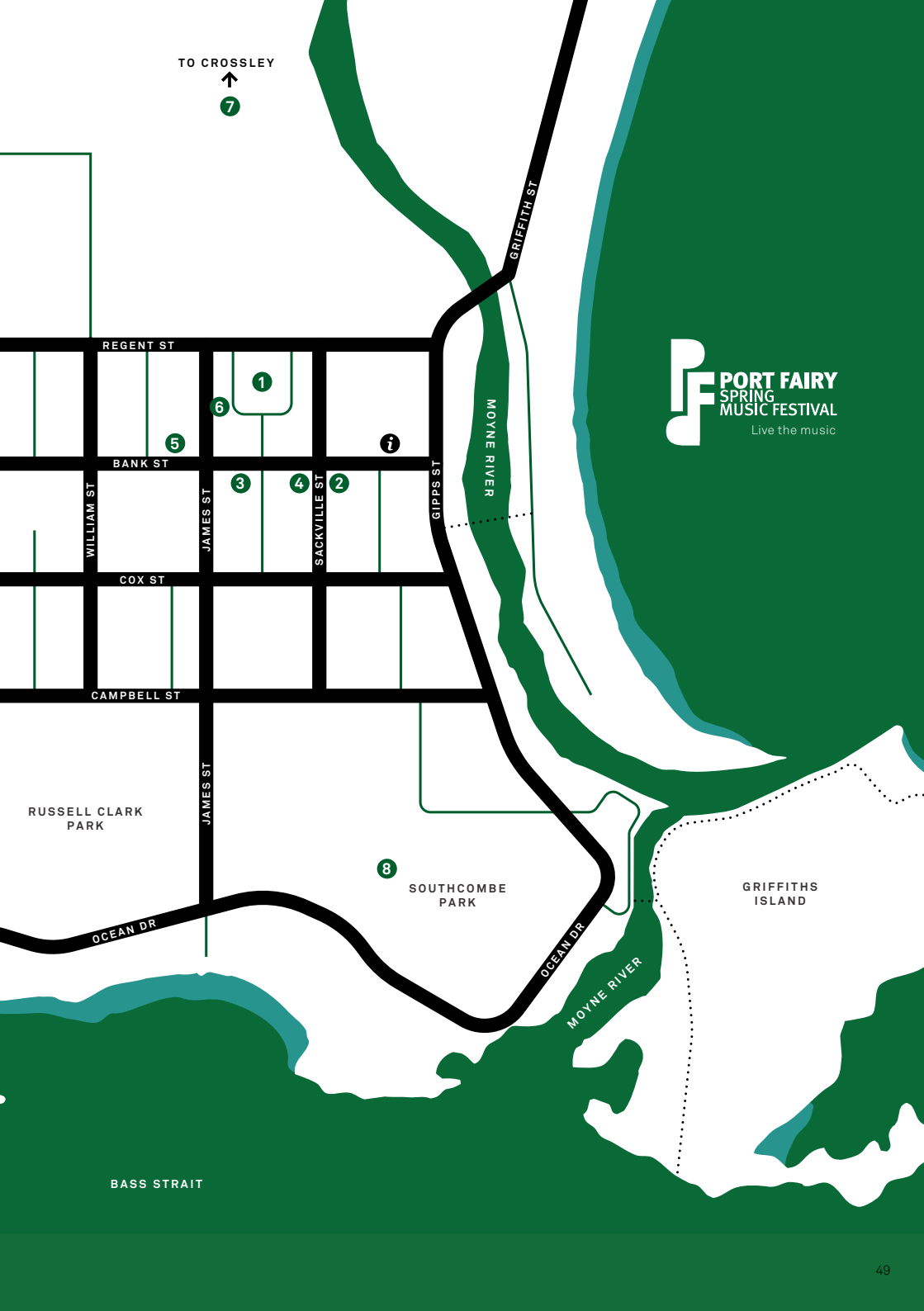
The Port Fairy Spring Music Festival has flourished in this location since its inception in 1990. Visitors to the Festival have enjoyed the celebrated ambience of the town, complemented by the proximity of its performance venues.

Port Fairy possesses a vast array of cafés and restaurants offering excellent cuisine which enhance the experience of the Spring Music Festival. With many accommodation options and ranges, there is somewhere for everyone to be comfortable whilst attending the Festival.

FESTIVAL VENUES MAP INDEX

1. St John's Church
- ♿ 2. Lecture Hall
- ♿ 3. Reardon Theatre
4. The Hub
- ♿ 5. Drill Hall
- ♿ 6. Festival Box Office (Blarney Books)
7. St Brigid's Crossley
8. Southcombe Park Stadium
- i** Visitor Information Centre & Bus Depot





TO CROSSLEY



PORT FAIRY
SPRING
MUSIC FESTIVAL
Live the music

1

6

5



3

4

2

8

REGENT ST

BANK ST

COX ST

CAMPBELL ST

RUSSELL CLARK
PARK

SOUTHCOMBE
PARK

GRIFFITHS
ISLAND

BASS STRAIT

MOYNE RIVER

MOYNE RIVER

WILLIAM ST

JAMES ST

SACKVILLE ST

GIPPS ST

OCEAN DR

OCEAN DR

GRIFFITH ST



Port Fairy Spring Music Festival is a celebration of fine music making within the idyllic surrounds of picturesque Port Fairy.

We invite you to enjoy our exciting collection of hour-long concerts across one vibrant weekend in October.

PORTFAIRYSPRINGFEST.COM.AU

