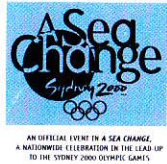
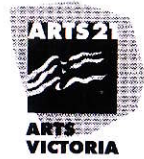


PORT FAIRY SPRING MUSIC FESTIVAL 1998



Acknowledgement to our fabulous sponsors:

The Port Fairy Spring Music Festival gratefully acknowledges the support of the Government of Victoria through Arts Victoria and Tourism Victoria, Festivals Australia, division of the Department of Arts, Sport and Tourism.

The 1998 Port Fairy Spring Music Festival is presented with the much appreciated assistance of The Victorian Health Promotion Foundation, Musica Viva Australia, Qantas, Henry Buck's, G Schirmer (Australia), Kirra Australia, Read Kelly (Solicitors), Pace Design, Port Fairy Press, The Shire of Moyne, Olympic Arts Festival, Flight Centre, Hotel Sofitel and the Australia Council.

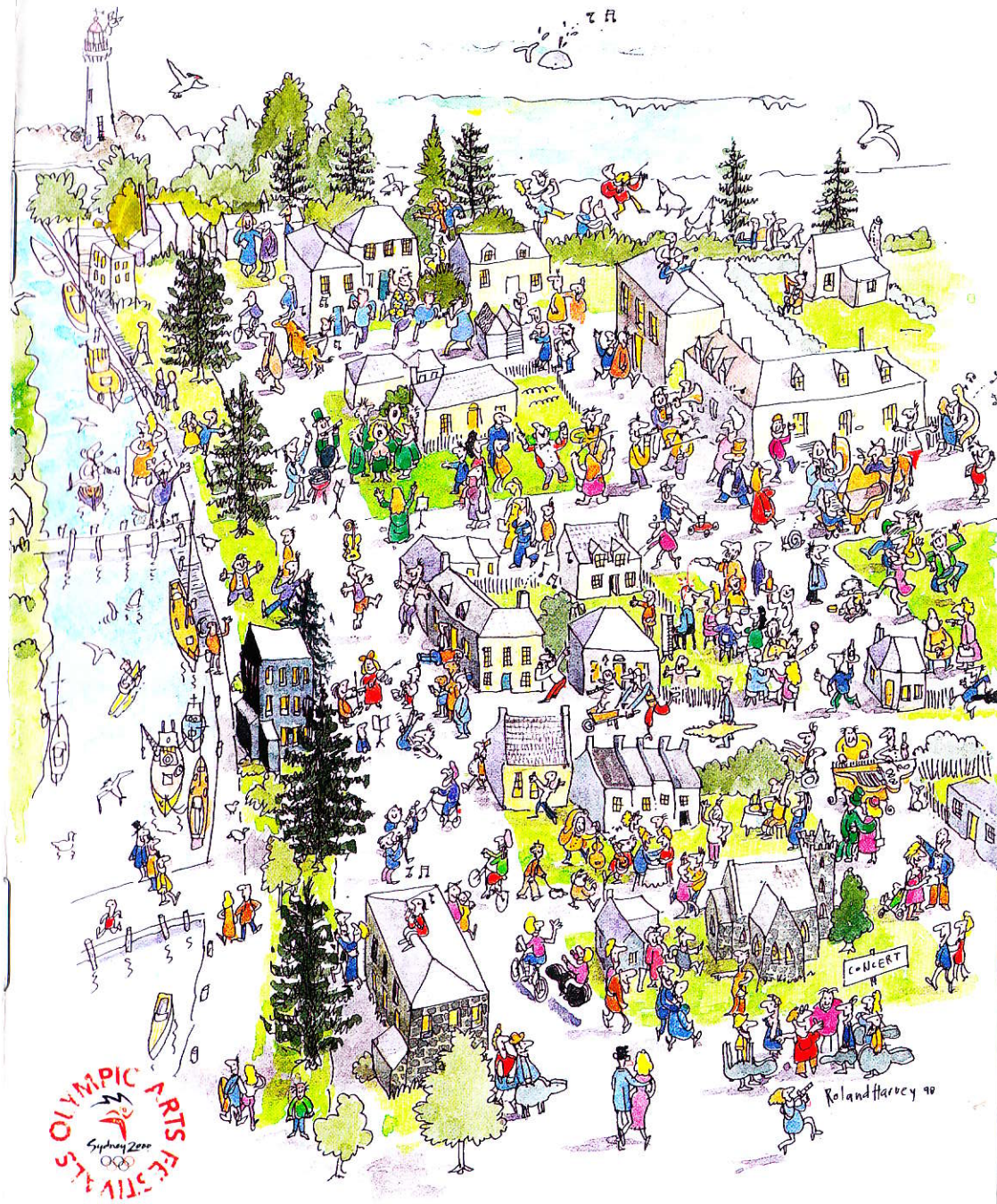
Port Fairy Spring Music Festival 1998

Telephone (03) 5568 2682 Fax (03) 5568 2833

Lauris Elms OBE Patron Eda Ritchie Chairman

Michael Easton Festival Director Len Vorster Artistic Director

Paul Clarkson Consultant Andrea Lowenthal Ticketing (Port Fairy) Dawn Holland Production



Port Fairy Victoria - October 9th - 11th 1998

Chairman's Introduction



In this, the ninth year of the festival, we are pleased to acknowledge a number of new funding initiatives that have allowed us to expand an already wide range of activities.

The Olympic Arts Festivals and Events organisers have selected two events at the Port Fairy Spring Music Festival for their 1998 festival, called *A Sea Change*.

On Sunday afternoon there will be a free open-air concert on the Sydney 2000 Olympic Touring Concert Stage in the Botanical Gardens featuring music directly inspired by the sea. There will also be a new children's music theatre piece *Cook's Tours*, which promises to be a rollicking musical adventure with a message.

In the same spirit as the very successful production *Paternity* in 1996, this event will combine leading national and local professional performers with enthusiastic residents. *Cook's Tours* is sponsored by Festivals Australia, a Commonwealth Government initiative which supports cultural activity at regional and community festivals. The festival has also received from Tourism Victoria (through the Regional Festivals Support Fund) additional funding for marketing and production.

Our direct mail program to supporters has been improved with new computer equipment provided with funds from Arts Victoria.

This year marks the centenary of the birth of **George Gershwin**, and Artistic Director Len Vorster pays tribute to the composer with a jazz-inspired opening concert performed by the **Schirmer Ensemble** who have recently received rave reviews in London for their first NAXOS compact disc of music by Stravinsky. They will be joined by brilliant young Australian pianist Lachlan Redd in Gershwin's *Rhapsody in Blue*. A second program features the Gershwins' contribution to music theatre.

A highlight of the festival will be the much requested return of tenor **Ian Partridge** who appears exclusively at the festival singing **Schumann**, **Haydn** and English art songs.

This Festival Brochure contains details of the sixteen events that make up the ninth Port Fairy Festival. Needless to say, none of this would be possible without the major support the festival enjoys from the State and Federal Governments, the Victorian Health Promotion Foundation and corporate sponsors including **Yamaha**, **Pace Design**, **Henry Buck's**, **The Flight Centre**, **Hotel Sofitel** and **Kirra** who graciously sponsored our elegant limited edition key rings fashioned in rare Australian pewter. These will be available at the festival shop. We are continually trying to improve the festival and would welcome any comments or suggestions that you may have.

Eda Ritchie
Eda Ritchie, Chairman

Port Fairy spring music festival 1998



Michael Easton, Director



Len Vorster, Artistic Director



About the Port Fairy Spring Music Festival

For those of you returning to the festival, welcome back. To newcomers we extend a warm welcome and assure you of a wonderful weekend of intimate music making, meeting with artists at the festival club and all the delightful attractions of the wonderful coastal town of Port Fairy, including many excellent restaurants, 'watering holes' and the quite stunning array of heritage buildings.

The festival consists of a series of music events most of which last one hour. This year there will be no printed program but each concert will be introduced either by the artist involved or by a recognised music authority.

There is ample time between concerts to enjoy refreshments and Port Fairy's diverse and excellent eateries ensure speedy service. For those who will be self catering through the weekend there are well-stocked supermarkets and bottle shops providing the necessary physical nourishment to complement the artistic feast that the weekend provides.

The Festival supports healthy living and the "Active for Life" message, so please take time to walk around Port Fairy. With over fifty National Trust classified buildings and a dramatic coastline there is always something to see and enjoy. Port Fairy is an easy three and a half hours drive to the West of Melbourne on the Princes Highway. A longer, more scenic approach is via the Great Ocean Road. Or take the easy train service to Warrnambool with connecting bus to Port Fairy. Once in Port Fairy, you'll find the performance venues are within easy reach of each other. The weather can be a bit bracing at this time of the year, so a warm coat and an umbrella are recommended. Some of the venues are rather 'rustic' so you might like to bring a cushion for added comfort. As many of the concerts are recorded by the ABC we ask that you stifle coughs whenever possible and of course please turn off mobile phones and alarm watches. The tourist information office (telephone (03) 55 682 682) can provide a list of available accommodation. The festival reserves the right to alter programs and artists without notice. Please note that all ticket sales are not refundable.

brochure design by Jonathan Cecil, Port Fairy Press

7.00 pm

Festival Drinks in the Marquee

8.00-9.00 pm
Cinema (map 4)

Festival Launch

Rhapsody in Blue

with the Schirmer Ensemble
conducted by **Brett Kelly**
with **Lachlan Redd** (piano)

original drawing for
"Ragtime" by Pablo
Picasso



Celebrating the Gershwin Centenary:

Igor Stravinsky Ragtime for Eleven Instruments
George Gershwin Rhapsody in Blue
Richard Rodney Bennett A Jazz Calendar

Once thoroughly despised by academic musicians, jazz has exerted a powerful influence on 20th Century music. Stravinsky caught the bug as early as 1918, but it was the genius of George Gershwin that brought jazz in from the cold and stretched the bounds of serious music, so it's now possible for composers such as Richard Rodney Bennett to "cross over" from the extremes of avant garde technique to the delights of jazz without any need to apologise.

The Schirmer Ensemble was established in 1997 at the initiative of music publishers G. Schirmer (Australia) and takes its name from the nineteenth-century founder of the American publishing house, Gustav Schirmer. The ensemble, which includes many of Australia's finest musicians, aims to present music of the twentieth century that is both challenging and entertaining. Here it performs under the artistic direction of pianist **Len Vorster** (also director of the Port Fairy Spring Music Festival) and resident conductor **Brett Kelly**, who is also artistic director and conductor of the Academy of Melbourne. The ensemble recently completed four compact discs for the NAXOS label, featuring music by Stravinsky, Falla, Holst and Easton, and these are available at the Festival shop.

9.30 pm

Jazz After Dark at the Royal Oak

Royal Oak Hotel
(map 6)

Hamilton College Dixieland Jazz Band

Bob Chamberlain trombone, **Darren Osborne** clarinet,
Alexandra Brown trumpet, **Thomas Rutter** piano,
David Brightling bass, **Roger Kennett** drums.



The Hamilton College Dixieland Jazz Band is a school-based ensemble of staff and senior students who enjoy playing traditional jazz. The band performs regularly within the school community as well as professionally at private functions. It recently returned from Tasmania and performed aboard the *Spirit of Tasmania*. This blend of youth and experience generates an energetic, enthusiastic sound.



George Gershwin

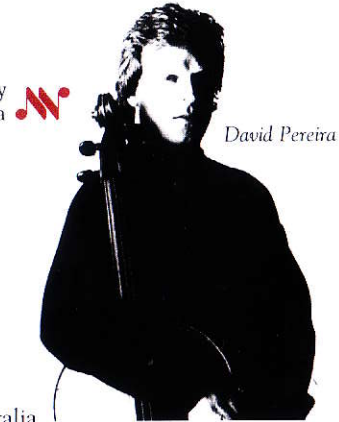


10.00-11.00am

Lecture Hall
(map 2)

David Pereira
Cello Recital

presented by
Musica Viva



David Pereira

Nigel Westlake Onomatopoeia for cello and delay
J.S. Bach Cello Suite No.5 in C Minor for solo cello
Elena Kats-Chernin Alla Punta Battutta for solo cello
Martin Wesley-Smith Uluru Song for singing cellist
Carl Vine Inner World for cello and tape

During the last sixteen years David Pereira has established himself as an outstandingly versatile cellist while holding the most coveted positions in the country. He was for eleven years Cellist of the Australia Ensemble, for seven years Principal Cellist of the Australian Chamber Orchestra and for three years Principal Cello with the Sydney Symphony Orchestra. As concerto soloist David has appeared with all the major ABC orchestras in Australia. In late 1997 Pereira was awarded the Sounds Australian National Award for the Best Performance of an Australian Composition (Carl Vine's *Inner World*). In February 1998 he was received with great acclaim in China as soloist with the Australian Youth Orchestra. This concert features the world premiere of a work by Elena Kats-Chernin.

11.30am-12.30pm

Cinema
(map 4)



Community Event at the Cinema

Cook's Tours

A new Children's Music Theatre Piece
based on the life of Captain Cook

Music by **Michael Easton**.

Words by **Rosslyn Beeby**.

Designed by **Paul Kathner**.

Directed by **Wendy Grose**.

Performers: **Manfred Pohlenz**, **Wendy Grose**
Richard O'Shaugnessy, **Anna Lee Robertson**
and members of **The Brauer Chamber Choir**
plus members of the local community.



A light hearted adventure for the whole family featuring established and local performers and containing numerous health messages, including nutrition, sun-awareness and exercise. The audience become natives of various countries and the effects of discrimination are explored. What happens when Captain James Cook, the last of the great romantic navigators, and Endeavour artist Sydney Parkinson, time travel and find themselves trapped on a yacht captained by two New Age businesswomen? What business venture do cosmetic queen and fitness guru Rosie Dawn and her computer savvy sister Pearl plan for the humble cabbage? Will Rosie and Pearl change their tune and become vociferous, high profile eco-warriors? And can Cook and Sydney destroy the credit card that has them trapped in another dimension? All will be revealed by the final chorus!

denotes work by an Australian composer

SATURDAY
10th OCTOBER

Port Fairy
spring music
festival 1998



11.30am-12.30pm
St. John's (map 5)

Choir of Ormond College

Musical Director: Douglas Lawrence. Organist: Rhys Boak
 Orlande de Lassus Missa Bell'Amfitritit Altera
 Charles Villiers-Stanford Three Motets Op.38
 Geoffrey Burgon Nunc Dimittis (first Australian performance)
 Michael Hurd A Secular Anthem (first Australian performance)
 Gordon Kerry Magnificat and Nunc Dimittis
 Phillip Nunn Spiritus Domini
 Samuel Barber Heaven-Haven, Sure on this Shining Night, Agnus Dei.
 Giovanni Gabrielli Jubilate Deo



Founded in 1982, the Choir of Ormond College (University of Melbourne) has built an international reputation in concert performance, commercial recording and broadcast. The 24 singers under director Douglas Lawrence were recently described as "one of the world's most virtuoso chamber choirs".

Lunch

2.00pm-3.00pm
St. John's (map 5)

Lachlan Redd Piano Recital

Brilliant young Australian pianist studying in New York. Introduced by the pianist.
 Joseph Haydn Piano Sonata No. 47 in B Minor Hob. XVI/32
 Sergei Rachmaninoff Piano Sonata No. 2 in B Flat Minor Op. 36
 Richard Danielpour Psalms (1985) Morning, Afternoon, Evening.

Twenty-four year old pianist Lachlan Redd has emerged as one of Australia's finest young artists. As a scholarship student and a recipient of the Queen's Trust for Young Australians, Lachlan is pursuing his Master's Degree in piano performance at the prestigious Manhattan School of Music with pianist Phillip Kawin. In March of 1995 Lachlan won first prize at the Fourth International Youth Music Festival 'Virtuosi of the Year 2000' competition held in St. Petersburg, Russia. This culminated in a performance with the Tchaikovsky Chamber Orchestra in the historic Mariinsky Theatre. Since then he has appeared in Australia as both recitalist and concerto artist for the Australian Broadcasting Corporation in simulcasts on ABC TV and Classic FM. Lachlan was 1996 winner of the National Keyboard finals of the ABC Young Performer of the Year Awards.



Lachlan Redd

3.30pm-4.30pm
Lecture Hall (map 2)

Ian Partridge Farewell Recital

Returns after his magical 'Winterreise' in 1996 to give his Australian Farewell Recital with Len Vorster
 Introduced by Ian Partridge

Robert Schumann Dichterliebe Op. 48
 Joseph Haydn Piercing Eyes, She Never Told Her Love, Sailor's Song
 Roger Quilter Come Away Death, O Mistress Mine
 Ivor Gurney Down by the Salley Gardens, Nine O' the Clock
 Peter Warlock Sleep, Passing By, Pretty Ring Time



Ian Partridge is one of Britain's leading lyric tenors. His wide repertoire encompass the music of Bach and Monteverdi, the Elizabethan lute songs, German, French and English songs and first performances of new works. Ian Partridge continues to collaborate with the actress Prunella Scales, with whom he has shared over 300 performances of *An Evening with Queen Victoria* all over the world. He is a professor at the Royal Academy of Music, and was awarded the CBE in 1992 for services to music.

SATURDAY
10th OCTOBER

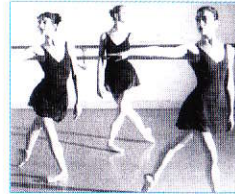
Port Fairy
spring music
festival 1998



5.00pm-6.00pm
Cinema (map 1)

Australian Ballet School

Choreographer: Mark Annear. Designer: Paul Kathner
 Michael Easton Cocktail Hour
 George Gershwin Three Preludes
 Felix Mendelssohn Piano Concerto

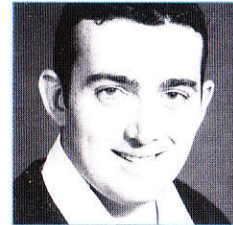


The Australian Ballet School is a virtuoso ballet company that showcases the youthful energy of Australia's premier dance institution, with 3 diverse works choreographed by Mark Annear, who also introduces the performances.

6.30pm-7.00pm
Lecture Hall (map 2)

The Night of the Wedding

A Pre-Prandial Entertainment by Michael Hurd
 The Lady Anitra Blaxhall, The Count Blake Fisher,
 The Baron Manfred Pohlenz, Antoine Michael Smallwood
 Director Paul Clarkson. Designer Paul Kathner.
 Musical Director Len Vorster.
 Introduced by Michael Hurd.



Blake Fisher

The world premiere performance of a new comic chamber opera by distinguished British composer Michael Hurd, our festival's composer-in-residence. It is 1810, and Count Gervaise Polisson is relaxing in the drawing room of his house in Paris when he receives an unexpected visit from a damsel in distress. His attempts to assist her lead to a surprising result. Make this performance the delicious aperitif to dinner at one of Port Fairy's many charming restaurants.



Anitra Blaxhall

Dinner

8.30pm-10.00pm
Cinema (map 4)

George and Ira: The Gershwins

A George Gershwin Celebration Song Concert
 Narration by the ABC's Christopher Lawrence.
 Musical Director Julia de Plater,
 Director Paul Clarkson, Designer Paul Kathner
 Performers: Judy Glen, Anitra Blaxhall,
 Michael Smallwood, Michael Strong.



George and Ira let their *Fascinating Rhythm* loose on their Broadway musical stage in 1924, when George was 26 and Ira 27. Now as we celebrate the brilliant brothers' centennials (Ira's in 1996, George's this year), that rhythm permeates not only New York but the country and the world. This performance features songs from such hit shows as *Lady Be Good*, *Oh Kay*, *Funny Face*, *Girl Crazy* and *Porgy and Bess* as well as samples from lesser known works such as *Pardon My English*. Performed by some of our most talented exponents of music theatre.

10.15pm
Full House (map 7)

Urban Myth Jazz Trio

Order a late supper and your favourite drink, then sit back with your friends on the river's edge and enjoy the sounds of Melbourne's coolest contemporary jazz trio.



Tim Stevens

denotes work by an Australian composer

10.30-11.30am

The Quickening 

Cinema (map 4)

The premiere performance of an Opera in One Act, presented by The University of Melbourne Faculty of Music Opera Project.

Introduced by Johanna Selleck. Conducted by Nicholas McRoberts.
Directed by Sue Tweg. Play by Dymphna Cusack. Libretto by Sue Tweg.
Music by the young Melbourne composer, Johanna Selleck.
"She" who is dead: Tracy Bourne, "Arthur" her husband: Peter Chung,
"Olive" her friend: Lynlee Davies, "Marian" her sister: Sharon Kempton,
"Mr Lipscombe" her father-in-law: Paul Hughes, The "Light-Bearer"
(messenger from beyond the grave): Judith Dodsworth
with the Melbourne University Ensemble



"The Quickening" is an opera based upon the play *Shallow Cups* by Dymphna Cusack (1902-1981). A family gathers around the body of a young woman, grieving her death. A supernatural "lightbearer" appears, offering to return her to life, lights a candle and explains that she will remain alive only if one of them is genuine in their love for her. If not, she will die again once the candle has burnt down. The woman awakes, the candle burns, and the outcome remains to be seen.

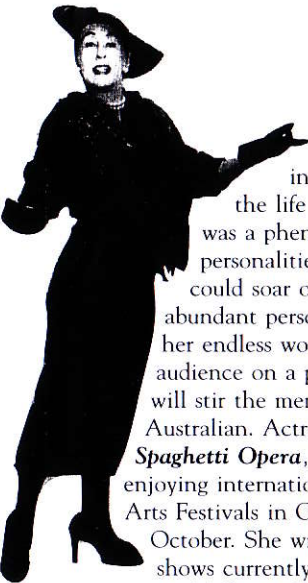
12.00 - 1.00 pm

"Our Glad" - a meeting with Moncrieff

Lecture Hall (map 2)

Written and performed by Judy Glen


A tribute to one of Australia's greatest Musical Comedy stars, Gladys Moncrieff, "Our Glad"



includes such delights as *I Was Dreaming*, *Vilia*, *We'll Gather Lilacs* and *Love Will Find A Way*. "Gladys Moncrieff born in Bundaberg, Queensland in 1892...." These are the first words in a fascinating journey through the life and times of "Our Glad" by actress/singer Judy Glen. Gladys Moncrieff was a phenomenally popular artist in the days before television could elevate personalities far above the level of their skills. Gladys had "it". A superb voice which could soar over an orchestra (without microphones) 8 times a week, a warm and abundant personality, an attractive face, strong body that could withstand the rigors of her endless workload but most of all, that undefinable ability to communicate with her audience on a personal level and to make them feel she sang just for them. This show will stir the memory of many and fascinate others in its nostalgic memory of a great Australian. Actress/singer/writer/comedienne Judy Glen, whose solo show *Spaghetti Opera*, after its record-breaking national tour, enjoying international recognition, and will appear in Arts Festivals in Great Britain and America later in October. She writes all her own material for her two shows currently touring in Australia: *Meetings with Melba and Moncrieff* and *A Comedy of Arias*.



Lunch

 denotes work by an Australian composer

1.45 - 2.45 pm

St. John's (map 5)



Eclectic Collective

presented by Musica Viva
Christopher Latham violin
Daniel Herscovitch piano



Introduced by Christopher Latham



Sergei Prokofieff
Karol Szymanowski

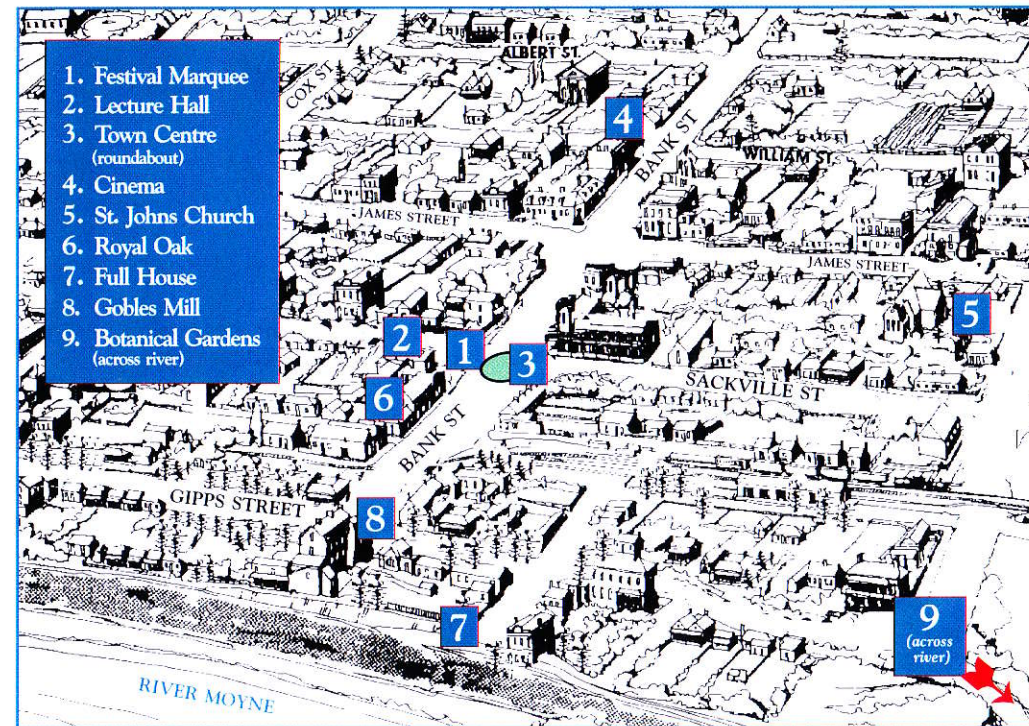
Nikolay Medtner

Five Melodies Op.35
Three Myths Op.30
1. La Fontaine d'Arethuse
2. Narcisse 3. Dryades et Pan
Violin Sonata No.1
in B Minor Op.21

The Eclectic Collective is an ensemble created by Christopher Latham and Daniel Herscovitch to celebrate the rich diversity of classical music. They present dramatic, creative and varied programs which expose works by less-known and well-known composers which have, for no good reason, fallen by the wayside. Christopher Latham has been a member of the ACO for four years with whom he has toured Australia, Europe, Asia and the US. Daniel Herscovitch regularly broadcasts and performs, aside from his teaching commitments at Sydney Conservatorium.

Port Fairy - a guide to the Festival venues

Sunday's programmes are continued on the next page



SUNDAY
11th OCTOBER

Port Fairy
spring music
festival 1998

3.00-4.30pm
Free Concert in the
Botanical Gardens (map 9)



Songs of the Sea

presented by the Sydney 2000 Olympic Arts Festival and Events, and introduced by Christopher Lawrence.

As part of the 1998 Olympic Arts Festival, *A Sea Change*, the Sydney 2000 Olympic Touring Concert Stage draws up at the Botanical Gardens. The program celebrates musical settings of the great sea poems with performances by: **Merlyn Quaife** *Soprano*, **Blake Fisher** *Baritone*, **Helen Williams** *flute*, **Len Vorster** *piano*, **Kristian Ireland** *piano*, **Ben Dickson** *vibraphone*, **The State Orchestra of Victoria String Quartet**: **Tony Conolon** *violin*, **Mara Miller** *violin*, **Alida Farrands** *viola*, **Bill Howard** *cello*. **The Brauer Chamber Choir** *directed by Manfred Pohlenz*

John Ireland *Sea Fever* for Baritone and Piano
Frederick Keel *Trade Winds* for Baritone and Piano
Peter Warlock *Captain Stratton's Fancy* for Baritone and Piano
Michael Easton *The Owl and the Pussycat* for Soprano, Flute and Piano
Werner Treiber *Springtime* for Solo Vibraphone
Claude Debussy *The Submerged Cathedral* for Solo Piano
Samuel Barber *Dover Beach* for Baritone and String Quartet
Claude Debussy *Arabesque No 1* for Vibraphone and Piano
Roger Quilter *Three Songs of the Sea* for Soprano and Piano

Michael Hurd *Shore Leave* for Baritone and String Quartet
1. *Convoy* 2. *Elizabethan Sailor's Song* 3. *Shore Leave*
4. *Able Seaman Hodge remembers Ceylon* 5. *Sailor's Carol*

James Cecil *Underture* for Soprano, Piano, Vibraphone and String Quartet (World Premiere)
Kurt Weill *My Ship/Here I'll Stay* for Soprano, Baritone, Alto Flute and Piano.
Medley from Pochobantas for Choir

No tickets will be issued for this free concert. Small collapsible chairs are recommended for those attending. works by Australian composers

8.00-9.00pm

Cinema (map 4)

Festival Finale

Ian Holtham plays Liszt

Newly appointed as Head of the Piano Department at Melbourne University, Ian Holtham introduces and plays the ultimate romantic piano music.

Franz Liszt *Funerailles*

Franz Liszt 3 *Petrarch Sonnets* from *Annees de Pelerinage (2ieme Annee)*

1. *Sonetto 47 del Petrarca* 2. *Sonetto 104 del Petrarca* 3. *Sonetto 123 del Petrarca*

Franz Liszt *Sonata in B Minor*

Ian Holtham had specialist musical training from an early age. In his teens, he travelled to Europe on a scholarship and based himself there for over a decade. He is a student of Geza Anda, Geoffrey Parsons, Enrique Barenboim and Peter Feuchtwanger whose assistant he was for nearly five years in London.

He also studied composition and conducting at the Guildhall School of

Music. He made his South Bank and Wigmore Hall debuts before he was twenty and has performed throughout Australia, England, Ireland, Switzerland, Italy, France, Austria, Hungary, Singapore, Hong Kong, Thailand and Korea. As concerto soloist he has performed with a number of distinguished conductors including Henry Krips, Geoffrey Simon, Patrick Thomas, Spiros Rantos and Christopher Martin.

All details correct at time of printing. The Port Fairy Spring Music Festival reserves the right to vary without notice programs, artists and/or venues as may become necessary. All sales are final.



How to Make Your Booking



Mail this Booking Form (please print details clearly) to:
Port Fairy Spring Music Festival Bookings,
Port Fairy and Region Visitor Information Centre,
Bank Street, Port Fairy 3284

**PURCHASES
OF TICKETS TO
EIGHT EVENTS OR
MORE WILL
RECEIVE A
10% DISCOUNT.**

Name

Address.....

State Postcode Tel (STD.....) Day..... Eve.....

Please supply tickets as indicated below:

How many tickets?

Which concert/s (mark below)?	Normal Price	Concession*	Total
Rhapsody In Blue	\$20	\$16	\$
Jazz After Dark at the Royal Oak	\$12	\$10	\$
David Pereira Cello Recital	\$20	\$16	\$
Cook's Tours Family** : \$25 Adult:	\$10	Child: \$ 5	\$
Choir of Ormond College	\$15	\$12	\$
Lachlan Redd Piano Recital	\$15	\$12	\$
Ian Partridge Farewell Recital	\$30	\$24	\$
Australian Ballet School	\$20	\$16	\$
The Night of the Wedding	\$10	\$ 8	\$
George & Ira - The Gershwins	\$20	\$16	\$
Urban Myth Jazz Trio	\$18	\$14	\$
The Quickening	\$15	\$12	\$
"Our Glad" A Meeting With Moncrieff	\$15	\$12	\$
The Eclectic Collective	\$15	\$12	\$
Festival Finale - Liszt and Ian Holtham	\$15	\$12	\$

* **Proof of Concession status:** If claiming a Concession, ie Age, Invalid, TPI, Supporting Parent Pensions, Unemployed, full-time Student or Youth (20 and under), please detail your Pension /Unemployment/Student number (if applicable) and enclose a photocopy of the Concession Card. Travel concession and Seniors' Cards may not be used as proof of eligibility, as they are not means-tested.
** **Family:** 2 Adults, 2 Children

Total: \$

PAYMENT

Tick one box:

Deduct 10% for eight events or more: \$

Payment now enclosed \$

Cheque/Money Order enclosed payable to "Port Fairy Spring Music Festival"

Please charge the ticket cost to my Credit Card Bankcard Visa MasterCard

Cardholder's name Your signature please.....

Card number

Expiry date Do you require an accommodation listing? Yes No

How to Book by Telephone

Have your Credit Card details ready, then call Ticketmaster BASS* on 11566, or 018 338 998 Free Call (if you are calling from out of Melbourne), Monday to Saturday, 9:00am-9:00pm, Sunday 10:00am-5:00pm. **In person:** At all Ticketmaster BASS* outlets.

*Ticketmaster BASS accepts Bankcard, Visa, MasterCard, American Express and Diners' Club, and its bookings are subject to additional ticket issue charges.